

**HOCHA KHISLAHAKLERUNE HASRUJIKOLU  
CHINIKANTSHI YIMIKOLU 2.0 BRASIL  
YA HIYRUNU CHIMA MWAJNUTU TSHIJNE  
PIRANA ICHINIKANUWYEHIXIKOWAKA**



**AMAZÔNIA**  
**2.0** Conectado  
por nossas  
florestas

HOCHA KHISLAHAKLERUNE HASRUJIKOLU  
CHINIKANTSHI YIMIKOLU 2.0 BRASIL  
YA HIYRUNU CHIMA MWAJNUTU TSHIJNE PIRANA  
ICHINIKANUWYEHIXIKOWAKA



Kamhatshine

Vera Olinda, Julieta, Frank, Billy

Hepixatshine

Aldalúcia Ferreira, Ana Cláudia Salomão

Mayawletshkaka

Hihlepoko Yonhatatshri

Carolle Alarcon, Karen Podvin, Braulio Buendía

Pixkakaklu hixkakkaluru

Hpohijexikowaka

Ruhlepoko pixanaxikowaka

Yineru tokanha rutajikowaka:

Shelton Lima de Souza (tsaī do povo Yami awá)

Joaquim Paulo de Lima Kaxinawa (hãtxa kuī do povo Huni kuī)

Jaime Sebastião Prishico Manchineri (Manchineri)

Diagramação:

Alessandra Arantes



# HIPIRANYEHKAKA

SATU TSHININRI HKANIPREXIKOWAKA – PNUTHOHNE REKHIXIKOWAKAPA	6
REKAKHIXIKOWAKA	7
CHINIKANTSHI HOCHA PIRANA 2.0	9
A COMISSÃO PRÓ-ÍNDIO	10
TSHIJI HISLAHIKOWAKA PANERUNE PEJNU TSHINANUYA JITAKLEWAKLERUNE HÁ WIXANNU SRETA HIHLEPOKOTATSHINE	13
2 RIXINRI KANIPRERU - HASRUKLEWLU	15
RUTTAKO (HO HYONAXIKOWAKA)	16
SATU TSHININRI YONATKALURU – POKTSHI HISLAHLU	17
SATU RIXINRI YONATKALURU – RETJEXIKOWAKA HANU POTU RIXA POKTSHI	19
RUTTAKO (HO HYONAXIKOWAKA)	19
KAMHA PIRATKALURKAKA	20
HIPIRANKAKA HWATSHRI YEHITKA	20
KAMRURTSHIKAKA HAKANHAJEMTATSHRIPA	41
WETANRU	43
WALEYMALU	44
HEPI TSHININRI YONATKALURU – RUSLAHIKOWAKA HIYRUNU TSHIJKAKA HIYRUNU HWIKOWAKA	45
REKHIXIKOWAKA	45

HALUKKALURU	46
PAHIXANKAKA	46
MAPA TSHININRI PIRANA – TSHIJKAKA HIYRUNU IKOWAKKAKA HIMIYNUMSAKAJIKOWAKA RUSLAHIKOWAKAPA TSHIJKAKA	53
KAMRURTSHIKAKA KAMHAJEMTKALURUPA	84
REXIKOWAKA HO RETUMHIKOWAKA	85
KAHWAKPIRRU MAHLEKAKA	86
HIPIRANYEHKAKA	88
MAPA TSHININRI YONATKALURU – HWIKOWAKA HIHLEWLU PIRANA	89
RUTAJIKOWAKA (HO REKHIXIKOWAKA)	89
KAMHA PIRATKALURKAKA (HO HALUKKALURKAKA)	89
HIPIRANKAKA HWATSHRI YEHITKA	90
KAMRURTSHIKAKA KAMHA JETKALURKAKAPA	95
REXIKOWAKAPA	96
LISTA DE SIGLAS	97
RUKCHIJIKOWAKA PIRANYEHKAKA	98



**1 SATU RIXINRI  
HKANIPREXIKOWAKA -  
PNUTHOHNEKAKA HIYRUNU  
REKHIXIKOWAKA**

## REKHIXIKOWAKA

Halpokotkaluru kamrurewaxikowaka psojite rixa hchinikanyehixikowaka Panchinikanurune-yma UICN - Brasil

hiyrunu Comissão Pró Índio do Acre (CPI-Acre), mitshikananu kamrurtshi pirana kamhapiratkaluru rekhita

rasrujikowakapna tshiji hislahatshine Hocha pirana chinikantshi 2.0 Brasil-ya Amazônia 2.0 no Brasil.

Xyekaka hepixlu psojite pahchinikanurune waleni nº 011-2020 waleni satu chinikantshi,

“ralpokoxikowaka htshina hichinikanuwlexyawakna rasrujikolupna hocha pirana chinikantshi-ya 2.0 Brasil-ya,

rixa halujikowaka htshina hchinikanyehixikowakapna

hmixkoxikowakapa mapa hixatshri hocha hislahikolu,” waleymakatvani raluka kamhakota.

Rasrujikowakapna tshiji suslahaklerune hiyrunu yine Jitaklewaklerune (AAFI)

hepi década pnute tkalu yinuwajibatka Hakriya. Waleni satu hasruklewlu CPI-ACRE yinuwakle hapatjekaklu xkehi yine jitaklewkleruneyma Hakri hajene (AMAAIAC).

Xyeni satu hasruklewlu yinuwajibokolu rimata hislahikowakapa yine tshijne hwikowwakaka, rumukata kamrurewlexyawakna AAFI hipoktshikakayna hiyrunu hocha hajeru pirana ruynumsakajyawkapna hiyrunu hmixkoxikowakapa wixannuya.

Xye hasruklewlu himaxikolu tshiji hislahikowaka pirana AAFI hislanlu htshijnekaka, ruslhluna ptowru hocha hwatshrikaka).

Wane rixa hepixlewletna nyi UICN hiyrunu CPI-acre hihlepokotlu satu hasruklewlu tshijkaka himata hislahikowakapa, xye hasruklewlu yinuwajibokolu

**Rumukata hepikowakapa hasruklewlu, mapa kata hyonatka  
ruphujexikowakapa, rumukata heneklexikowakapna:**

Satu rixinri pirana - Hwikowakkaka hislahikowaka.

Hepi rixinri pirana - Kosekatshri hiyrunu towutlewatatshri mtespirankakatu yonaxikolu – Ruslahikowaka hwikowaka tshijkaka; hiyrunu 3 tshininri hyonaxikowaka hwikowaka hinkajikolu.

Wale ptowruko hekhitlu hijhakalurkaka piranyehi; rekhitlu hwatshri, kamrurtshi, rixikowakapa hiyrunu rexikowakapa (ho rimaxikowakapa) rumukata hexikowakanupa halikakpotu kamrurtshi tsrukakalune himukata hepixleyawakanupa hiyrunu hmunanhiyawakapluna hwikowakkaka hiyrunu yine tshijnekaka.



## CHINIKANTSHI HOCHA HAJERU HICHINIKANRETKALURKAKA 2.0

Chinikantshi Hocha hajeru hichinikanretkalurkaka 2.0 (A2.0) wale yinuwajibolu patshijne psojtkaka chinikantshi hichinikanretkaluru piranyehi hepixikolu 6 tshijne psojtkaka hyokanatka wannani: Brasil, Colômbia, Equador, Guiana, Peru hiyrunu Suriname. Europa hepixlewlw hyokanatlona tiyiro ruslahikowakapa ptowru hocha hwatshri (UICN) América tkatshi hichpajyawaka sreta.

Mitshikananu halukkalurpotu waleni pnute rimata hislahikowakapa hixa wtshijnekaka hiyrunu hocha susanatewaklerune (payrine) waneko hasruha hwaletatshinetka rimata hislahatkaluna wannako hinchinikanuyna hpoyaho hwalexawakna ptowru hixantshi rasruha kamhaletanrutkana rimwalerna hihkenu hiyrunu wannako rixannuna.

Brasil hyinuwa kamruxekowaka A2.0 wale hyokanyehitkana Panchinikanurune UICN Brasil, Hakri tsijne, mapa nerune tshijne sreta nwaka: (TI) Chima mwajnuto hiyrunu Poroso hapha hiyrunkoxa parque Estadual (PE) Chandless, waleni patshiji hislahikaluru jepirerumkoje ptohi neru hwiywaka (Kaxinawa, Madija, Manxineru hiyrunu Yaminawa) hiyrunu wale wnaha hwatshine.

Wanna tshijkaka A2. Brasil - ya rimatyehixika jepireru mkoje pejnu municione (Manoel Urbano, Santa Rosa, Assis Brasil hiyrunu Sena Madureira), Poroso hitspalakluya Peru hmahle stsipto tshijne hiyrunu Bolivia hmahle stsipto tshijne hwatshine. Mapa tshijne hochateko yoptokaka 1 milhão pnute tshiji rimaxikowaka 7,8% hiyrunu ptowru hkayijikowakanatka wale hekhitlu 0,28% psojite tshijkaka.



- A Equador**
- B Colombia**
- C Peru**
- D Guiana**
- E Suriname**
- F Brasil**



Figura 2 -Território de intervenção do projeto Amazônia 2.0 no Brasil

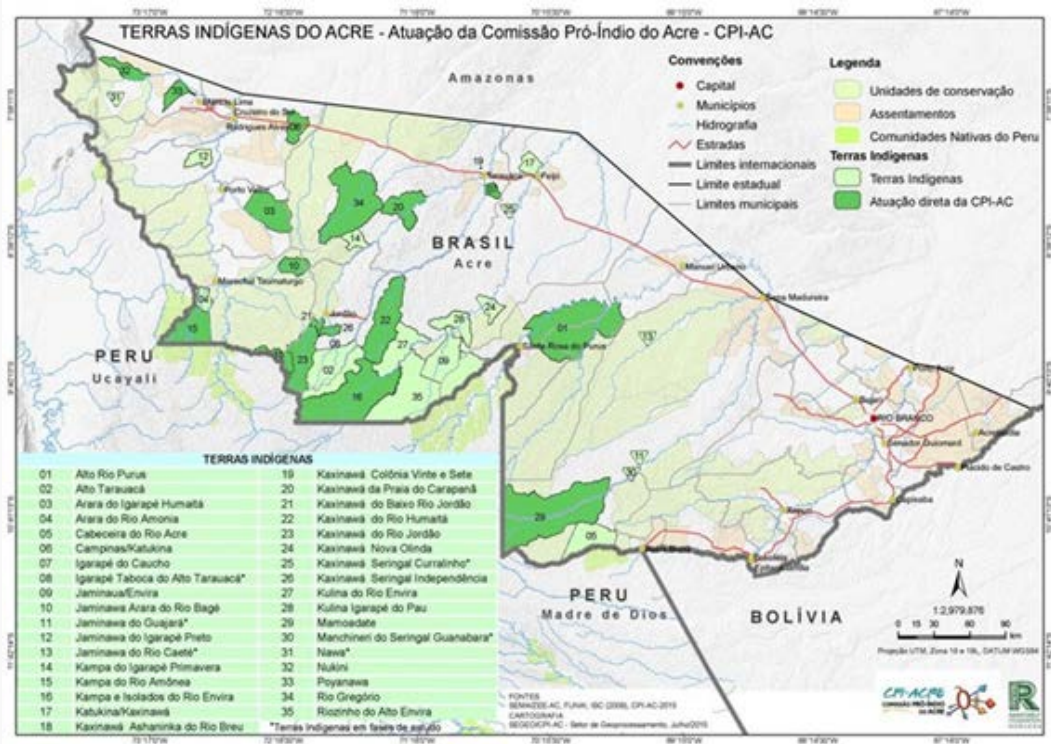
Yaholu-mka ruhle hislahikowaka, hmahle tshijne stsi rawyawaka, rawa hixo kojwaklewatatshi wale tnumne, wale tshinanu, satu kamrurtshi hihle hislahkolu hapatjexkehitatshineestaduais hiyrunu wanekohwatshine, ruslahyawakluna ptowruko hochá hajeru hma muchankachaxikowakapa hiyrunu rimathetanxikowakpatka hyokmana hohnemxyawakatka hameru katshikleruyma hiyrunu hochakaka.

## A COMISSÃO PRÓ-ÍNDIO DO ACRE

Comissão Pró-Índio do Acre (CPI) Wala yinuwaka hakanhakakletka fevereiro kurni 1979 tshininri mhalni. Tkamrurni panerune pejnu hakri hajenetepixyawakapa wannako rixannuna há rasrukakyawakna wannako htokanna ruslahyawakluna htshijnena há tshiji rawyawakna. Art. 9º - tshinyawakatka. CPI-Acre wala tkamhalerkakni: Ptowru hapatjeru, Conselho Diretor, Seretario Executivo hiyrunu Conselho Fiscal.

Reyinuwaklekananuko CPI-Acre tkamrurewata políticas públicas panerune pejnu hixannu potuko. Tsru potuklu chinikantshi. Tepixa nchinikanrewatkoxa pimri chinikantshiykaka wannani mturune hasrujikowaka hiyrunu yeyixlu hislahlu (80 hiyrunu 90 rixinri mhalni), Wtshijne hiyrunu wwiywaka hislahikolu (2000 mhalni papko), hixannutshi (2000), rawkoxyana rasrujikowakna panerunpejnu tsru hixikatshinwa papoktshikakaya hijhakalune ho kahwakpiratkalune rixyawakapna. CPI-Acre hepixatkana wannako hinchinikanna rekhixyawakapna, hijhakalune hiyrunu wannananwaka kamhinwa panerunpejnu waleyma kahwakpiratkalunni. Waleymakananuko tsrukakalune hichinikanuwata wane rixa hislahlexyawakapna Towutatshri panerunpejnukananuko Hakri hiyrunu Brasil hwatshine.





4 Rixinri mayawletshi CPI-AC kamhaleru Panerune pejnu tshijne Hakri. (CPI-AC, 2015)

1997 hyinuwaka kamhaletkatka mitshikananu hasruklewawaka panerunpejnu himatkalewaxyawakpatka – Centro de Formação hochá hwa poktshitatshine tshinanu (CFPF), Portaria tshinyawaka SEE/AC Nº 2322/97. Hitakhiwakatkaluroni hasruklewawaka jetjekleruneya (CORINES) mitshikananu hasruklewawakapji panerunpejnu hasrujikowakaEstado-ya (hiyrunu Brasil-ya).

Timwalo hepi CFPF yonawahlomta pohitkaluro potuko : i) Hepi nruhako yanumaxikolu piranyehi hiyrunu satkaka waleko rixannu kasruklewaklerune hasrujikolu Hakriya, Resolução tshinyawaka CEE Nº 05/98; ii) Hasruklewlu pirana hasruklu hiyrunu panerune pejnu jitaklewaklerune hasrujikowaka (ensino médio), Parecer tshinyawaka (CEE) Nº 101/2009, de 27 de novembro hiyrunu Resolução 236/2009, de 21 de dezembro de 2009.

Mitshikananu yinuwakatshroni piranyehni jitaklewaklerune panerune pejnu hihixikolu piranyehimta Brasil-ya. Tshiji piranyehi himata hislahikowaka pirana himatatshine, sato ONG hislahyawakna.

Satu kamrurtshi CPI-Acre kamrure waleni AAFIs, rimata hislahyawakapna, waleni papirana Wtshijne Hislahlu hiyrunu wwiywaka. AAFIs wanna kamrure kihler potukni hipoktshikakaymana hkamrurewaxyawakapna rimatjemyawakapluna hanu hixyawaka wwa há satu chinikantshini hasruklewlu, wixannu, wpomtano hiyrunu wutakle wnikeru, há pnumnu hixatshri nijittshi kamhikolu. Hiyrunkoxa rujhaluna wannananwaka ruchinikanuwaxyawakna hyinuwaka hislahlexyawakapluna ptowru hixatshri wtshijne tnumne hwatshri (GAVAZZI, 2018.p.18)



Figuras 5 - 8 -Estrutura física do Centro de Formação dos Povos da Floresta – CFPP. Fotos: Acervo CPI-AC, 2019

5 – 8 mayawle rixinri Panerune pejnu hasrukjexikowaka pji – CFPP.  
Mayawletshkaka: Hixlo CPI\_AC, 2009



## TSHIJI HISLAHIKOWAKA PANERUNE PEJNU TSHINANUYA JITAKLEWAKLERUNE HÁ WIXANNU SRETA HIHLEPOKOTATSHINE

Kamrurtshi ruslahikowaka ptowru hocha hwatshri panerune pejnu tshijneya Tis, kamrurtshi kyaprerpotni retjexikowaka hiyrunu pimata yopto piranyehixyawaklu tshiji. Seynimka rawna tsrukakalunpotu (FUNAI) wale pejnu hislahatshine Meio Hwikowakkaka (Ibama) há Hakriko hwatshine (Imac), seyni xawakni wanna kyaprena wane hixatshri kamrurtshi hkamhiywakna. Patshijnekaka myapretni hjihlokyehixikowakna htshijnena wane hwatshri rawyawakna hahmuna kihlero ho kwenuro, yankalu, chimahlu há pimrikaka. Yaholumka hocha hajene muchpakkane wane hislahikolu seyni wale hike munanhalu, Peru tshijne stsi potuko hwatshri hiknohatka wane rixyawaka hjihloka tshijitka yopo muna tshowhuxikowakapa (*Swietenia macrophylla*) runkakletkatka wale pakata Asheninka-nni wane hixkan Amonia wenne hwatshinni há pimri tshijne kakkoxa wane rixikanna poktshi stsi hwatshinena ho hatnu hapostsi hwatshinkoxni (Vivan et al, 2002).

*Xye kamrurtshi kamhalu kihler potukoni. Xawakni tshijisulahaklerune rawyana satu kamrurtshi hislahlu hiyrunu retjexikowaka wtshijne. (...) Xye kamrurtshiyima, xye kamrurtshiyima rimatyehitka kihle rixyawakaya psoluka rimaxyehixikowaka psolpotuko wtshijne.*

*AAFI Benki Pianko, in Gavazzi, 2004.*

Hislahlu hiyrunu hetjeru kamrurtshi kihlerna papapkokakako hkamhikowaka wane hixatshri jitaklewakleruneya AAFIS poktshi ymakananuko. AAFIs walani sato heneka hchinikanrewatatshro hanu rixa kamhaletanruna, wannananwakako kamhanru, ruslanko há hpowratyehixko ptowru hhmuna hocha hwatshri. AAFIs wanna kamrurni ruhlepokhapyawakluna pakatako wtshijne jihlokna kyahkaklerune, kchimahaklerune, pakatako hahmuna haluka kochpakletatshine ho kchanaptshe haluka tshowhuretatsine ruchnkalerupna (katshowhurune) hichwuru ho yoxikachalu wtshijne tnumne. Wale hislahatshinni nyi AAFIs tshinkalune.

*AAFI José Marconde, 2017.*

*Pamhalkaka wkamhalu satu tsru hapatjeru wexyawakaplu hanu rixatka chimahlu, yankalu, hahmuna hyikowaka, hichwurkaka, hsana hitaklu, hajimekaphi kamhalu (waneywu 16 pantshi jimekapahi kamhikowaka TI) Hiyrunu pimrikaka. Xye ptowruko kamhaka htshina piranaxikowaka kamrurtshi ruslahikowaka Poyanawane tshijne. Satu nkamrurni netjexyawaklu hiyrunu nuslahyawaklu kyankaklerune hiyrunu hahmuna kochpakakleruneya”.*

*AAFI Jose Marconde, 2017.*

Hixo jitaklewaklerune AAFIs kamhakoxlu (AAV) Ibama2 hasruklewle koxa , ralpokotkana ho rasrukkana hanu rixa kamrurewletanna tshijiya hitaklewaxikowakapa. Seyni mitshikananhapka retko hanu htshina piranata tshiji hislahlu paranyehimta, AAFI yokanatanro sato yonawahlo IBAMA nwaka hinhatsho rumukata kamrurexikowakapa. Tshiji kaka hislahlu waleni satu kamrurtshi homkahi kamruretkaluru hasruklewlu,walkni hpoyankajinri rethale hocha piranyehkaka Psoltshijiko, runkaksajikolu há pimrine hinkakle koxa.

- Yinuwakatshine rixyawakna AAFIs kihleru hasruklewlu rixyawaka, AAFIs hkamhamtluna hanu rixa hislahkota wtshijne hiyrunu hitokoteya hiyrunu tshiji tnumne. AAFIs hislahlu tshiji yapamxyawaka pimri tshijne hipxakatshri rixyawakaya (patshijnekotka



An aerial photograph of a dense green forest with a winding river. A large, semi-transparent orange circle is overlaid on the center of the image, containing white text. The text is arranged in three lines, centered within the circle. The background shows a mix of dark green trees and lighter green areas, possibly a river or a clearing.

## **2 RIXINRI KANIPRERU - HASRUKLEWLU**

## RUTTAKO (HO HYONAXIKOWAKA)

Tshiji hislahlu pirana waleni satu chinikantshi kihler potuko rumukata panerunpejnu htshijne hwalex yawakna, kihle hwale rixyawakapna wannako rimwalerna hocha hajeruyuma, hihle hiwekle rixyawakapna, Artigo 231 tshinyawaka pixka há Constituição Federal hiyrunu tsru kamrurtshi hichinikanretjexikowakaya tshiji hislahikowaka panerune pejnu tshijne nwaka (PNGTI), raluka kamhaletanruni:

*Halikakalutupni hiyrunu pnute ranikko ruslahikowakapa ptowru wtshijne hwatshrikaka wimwalerkaka, kihle hiwekle wixyawakapa hikeko wma mahaxyawakanupa xawakni há hinamtatshine wimekahine, kahwakpiratkalurupni wixannu hchinikanu wtshina piranyehixyawaka pixka”.*

Rawkoxa satu hepixllewlu panerune pejnu pokshikaka hwatshine wannako rixannuna homkahitatshine kamhatshine, xawaknichatka retamtkatka tsru yokmanru potuko rixyawakatka xye hohnekaka hiyrunkoxa hocha hepihiweklerutu rixyawakaya panerune tshijne pejnu (TI) hiyrunkoxa Hislahikowaka (UC) kawhupotutkahonuka, wale tshinanukni rasrukkana kosekatshine hiyrunu pimrine poktshi hislahatshine ruslahikowakapa, hi koxa ruslahachaxikowaknupa, seyni ruslahikowakapa ptowru hixantshi wtshijne hitokote hwatshri, rekhitko ptowru ruknohjeru hislahikowakaya wtshijne hiyrunu wwiywaka.

Rexikowakatka xye tshiji hislahlutshiji suslahaklerune hasrujikolu pirana hewi rekhitlu kihle rixyawaka há rimata hislahyawakluna ptowru hocha hajerkaka. Wale tshinanu rujhalu pnute chinikantshi rimata jemikowakapa hiyrunu ruchinikanuwaxyawakapa panerune pejnu hixannu extrativista hiyrunu wnha wnaha hwatshine xye Hocha pirana tshinkaluru (Amazônia) 2.0 herotu pirana runkaklexikoluyma ruslahikowakapa tshijkaka (psoluko retjexikoluyma hihlepokotkaluruya tshiji hislahlu), xawakni rixannu hihlenu hiwekle panerune pejnu poktshikaka hwiywaka pimrine tskala rawyawakna kojwakluya wanna stsi há psoluyako.

Romkahi hekhixikowaka wannani mtserutu hasruklewlu poktshi hixannu. Xyekni hekhitlu psolpotuko hasruklewlu hihlepokotkaluru rekhixikowakapa, hijhakaluru,

hipiranyehi, pakamrurtshikaka hiyrunu rexikowakapa. Papiranyehkaka ruhlepokoxika hijkagaluru potuko kamrurtshi pirana, hethatkalurupa, mayawletshi psojtkaka hmayawlekaka, hepomlukaka hanu rixa hasrukotanu hasruklewawakaya, kihle rixa yinuwaklexikowakapa<sup>3</sup>, Rawa pnumnu hixa piranatatshti hiyrunu panerune pejnu tokanyehi.

## **SATU TSHININRI YONATKALURU – POKTSHI HISLAHLU**

### **Hijhagaluru rixyawaka hislahlu tsru kamnirewluya**

- Tshiji hislahlu hiyrunu hepixikolu;
- GPS, kamrurewaxikolu hiyrunu tuslahikowaka, hijhagaluru kamhikolo, rádio kamrurewaxikolu hiyrunu tuslahikowaka, celular-kaka hiyrunu aplicativo waleyuma ruslahyawaapna;
- Hiynumsakaklu yinuwajikolu hiyrunu rimaxyehixikowaka hanurpotni wkamnitjeru (Suslahaklerune hekhixikolu hanu rixa kamhaletanruna) Tshiji pirana hislahlu hkamhiyawakapna hiyrunu rasruka kamhaletanruna wale pirana pixkalutkaka;
- Wanepu satu hichinika kamhaletkalurupa hiyrunu wane potuko rixikowakapa poktshikakaya wane potuko rixa hakanhalex yawakapa Estado himukata poyahkaklexyawakaplu retjexyawakluna tshiji.

### **Hepi Rixinri Yonatkaluru – Ruslahikowaka hiyrunu Tshijkaka Hwikowaka Kosekatshri**

- Rekhixikowaka hijhagalurpotu rixyawaka hwikowaka hiyrunu yine;
- Ruslahikowaka pahixanuyma tshiji hislahikowaka Hakriya hiyrunu rakanhajexyawaka políticas públicas (advocacy);
- Papirana poktshikaka hislahlu hiyrunu khetjerewklene hwikowaka hislahlu
- Tshiji hislahlu hiyrunu hwikowaka pahislahkolutu hiyrunu panerune pejnu tshijne;
- Chinikantshti poyikowaklewatatshti, (hyokhixyawakpotni: Amazônia hiyrunu Hakri);
- Políticas Pública hiyrunu ruslahikowaka;
- Yanumsajexikowaka rekhixiko hijhagaluru potu walenanwaka kosekleri hiyrunu koxa himyeklu wane potuko hma rixa nikaxikowakanupa xye hiweklukaka hislahikolu hma nikaxikowakanupa hixhiweklexyawaka.

### **Mapa Rixinri Yonatkaluru – Hwikowaka Himata Hislahlu Hasruklewlu**

- Honu Hijhagalurpotu;
- Runkakleta piranaxikowaka rimatyehixiko halikakalutu wyaprewyehitjeru kojwawaktshi honu hijhagaluru potu panerune poktshi pejnu hislahokaluru.

Hkanipretka Honu Hijhakalurpotu pirana kochtsejikowaka rawanu pnute hkochtshe piranaxikowakapa raluka hinkaklexikowaka hiyrunu hyanumsayehixikowakapa wannani pnuterumukata tseruwnalex yawaka (ODS) rumukata kamhalexikowakapa honha kwana yehi hiyrunu powrawlu, rumukata wanepotuko himwalexikowakapa.

Xawakni potuko kamhakaluru rixa hichinikanuwyehixikowaka waleni 011/2020, satu rixinri yonatkaluru pnute hihlewamtatshri poktshiykaka walekni xye Hocha hichinikanuwyehixikowaka piranyehi 2.0 wale tshinanu wekhitlu "hetkaluru" xye herotu piranyehi hanu rixa kamhakotanu. Ralpokotkatka satu hasruklewlu rixikowakapa 105 papkolu rixikowakapa hethaluya, hasrukhapkatkalunepni Chima Mwajnutu Tshijne Hwatshine hiyrunu Poroso Hapha Hajene – Manxinerune, Yaminawane, Kaxinawane hiyrunu Madijane hiyrunu Parque Chandless hajene – wannako rixannuna kamhaklerune tomhikowakapa – hocha hajeruko hiwejikatshine hiyrunu wanha wnaha hwajetatshine. Ha pimrinkaka papirankaka yonaxikolune – Tshiji hislahikowaka hiyrunu Kosekatshri hiyrunu Ptowru wimwaleru kamhakaklewatatshri. – wanna ptowruneko hetlu jitaklewaklerune hasrujikowaka AAFI, walekni repixlewax yana Hocha Pirana Hislahlewax yatshine 2.0, seyni wanepna xye pirana himata kamhatshinetka. Hijhakalurni rimatyehixikowaka xye piranyehkaka yonatatshinetka wannani CPI-ACRE, kamrurewaxikatshine pnunnu hixa himatkaletatsshine hiyrunu jimatkalerune (geógrafos, antropólogos, biólogos, zootecnista, engenheiro florestal, kasruklewaklero, hwikowaka jislahakleru) hiyrunu hichinikanretanru xye pnunnu rixa hasruklexikowakkaka hichinikanuwluyma hiyrunu hanu rixa hasrukkotkana hasruklewawakaya.



## SATU RIXINRI YONATKALURU – RETJEXIKOWAKA HANU POTU RIXA POKTSHI

### RUTTAKO (HO HYONAXIKOWAKA)

Tshijkaka kamrurewaxikowaka hiyrunu hislahikowakkaka (Tis hiyrunu UCs) Hakri hajeru panerune pejnukananuka tshijne yinuwajibatka hiyrunu payrine, wannakni hekhi piranatlu yonawahlo mtaya ruchinikanuwyehixikowaka hanu rixa yotnekletanruna ho kamhaletanruna wannako rimwalerna hochá hajeru, satu yapkakluni Tshiji Hichinikanuwyehixikowaka hiyrunu hwikowakkaka Panerune pejnu Hwiyawaka (Tshiji Pirana hiyrunu hwikowakkaka) hiyrunu ruchinikanuwyehixikowaka hanu rixa yotnekletkotanu há ruslahikowaka.

Tshiji pirana Hislahlu yanunsayehixikowakatka, ruchinikanuwyehixikowakatka xye hichinikanuwlu piranyehi rimaxika poktshikaka kajwaklewaxikatshri tsru kyowikolkaka. Wale tshinanu, xye hichinikanuwlu piranyehi kihlerni Políticas Públicas nwaka rekhixikowakapa kihleru rixyawaka hislahlewlu tshinanuya (panerunpejnuya hiyrunu payrineya), Walekni Towutlewatatshri hepixlewaxinri paxkehkaka hixo hijhakaluruya hwikowakkaka hislahikowaka hiyrunu wimwalerkakaya, Kamrurewaklerune xkehi mixkoxikolni técnico-ne wenuxikolo rumukata kamhalexikowakapa poktshikaka hijhaleru, rali kamhaletkoklunutka tshiji hislahlu.

Tshijkaka hislahlu pirana hasruklewlu walekni henekanchinikanutna hochá hwatshine hanu rixa hislahletanruna htshijnekakna. Hasruklewluwaka hakanha panerune pejnu hiyrunu payrine wenu wnaha stsi hwatshine hchinikanuya ruhlepokoxikowakapa hijhakaluru poktshiykaka. Nyikaka pakamhakolutu rixluna pimrikakkoxa hihlepiratkaluru tshiji hislahlu hiyrunu hwikowakkaka xye tshijkaka.



## **XYE PATSRUJIRE PIRANYEHI RIXYEHITKA**

- 1) Rimatyehixikowaka (ho rexikowaka)
- 2) Retjexikowaka hiyrunu ruslahikowaka tshijkaka
- 3) Pnumnu rixyawaka hislahlu hiyrunu hetjerewlu
- 4) Rimatyehixikowakapa kojwhlukaka Panerune tshijnekakaya hiyrunu himrexikowaka
- 5) Tkamhikowaka kamrurtshi piranyehi hiklu retjetko
- 6) Himatapiyma ruslahikowakapa paktshikaka

## **KAMHA PIRATKALURKAKA**

### **Kamhapiratkalurkaka poktshi hijhikalurpotu waleni:**

1. Htserutko tecnicone himatkale hiyrunu hislahlewatatshine hislahlu kamrure tshijkaka psojite swaji ruslahjexikowakaya hwikowakkaka panerune tshijne pejnuya hiyrunu tshiji hislahkaluru Hakri hajeru, Hocha hajeru chinikantshi 2.0 rumukata kamhapotuxikowaka tshiji hislahlukaka.
2. Rethapkaxikowakpatka hanu rixa pnute wannananwaka hya hislahlexyawakapna panerune pejnuya hiyrunu payrineya, himatapiyma hkamrurewaxyawakapna (geotecnologia), yonawahlo hitakkaluropa tshiji mayawleykaka hiyrunu tshiji há hisputa pirana hinkaklexikowakapa.

## **HIPIRANKAKA HWATSHRI YEHITKA**

Satu piranyehi – Retjetko rimaxikowakapa hiyrunu rimatjemikowakapa rixhixannuxyawaka Tshijkaka Chima Mwajnutu Tshijne hiyrunu Poroso Hapha hitrunkoxa Parque Estadual Chandless (PEC) Hocha pirana Hichinikanyehixikolu 2.0.

Hetjeru waleni satu hixantshi rexikowakapa rumukata himatjemyehixikowakapa tshiji piranyehkaka.

Mapa tshijnene retjexika hichinikanuwluya rumukata mixkoxlexikowakapa poktshi hislahlu kamrurkaka. Hixo pimri kamrutshikaka wane hwatshineko kamhatkalu: panerune pejnu payrine. Wanna mapa tshijne wannani:

- Poroso wenne tshijne
- Chima mwajnuto Tshijne
- Parque Estadual Chandless Tshijne

**Hewi wimaxinri patshijnekaka, hwikowakkaka hiyrunu hanu sreta rawna:**

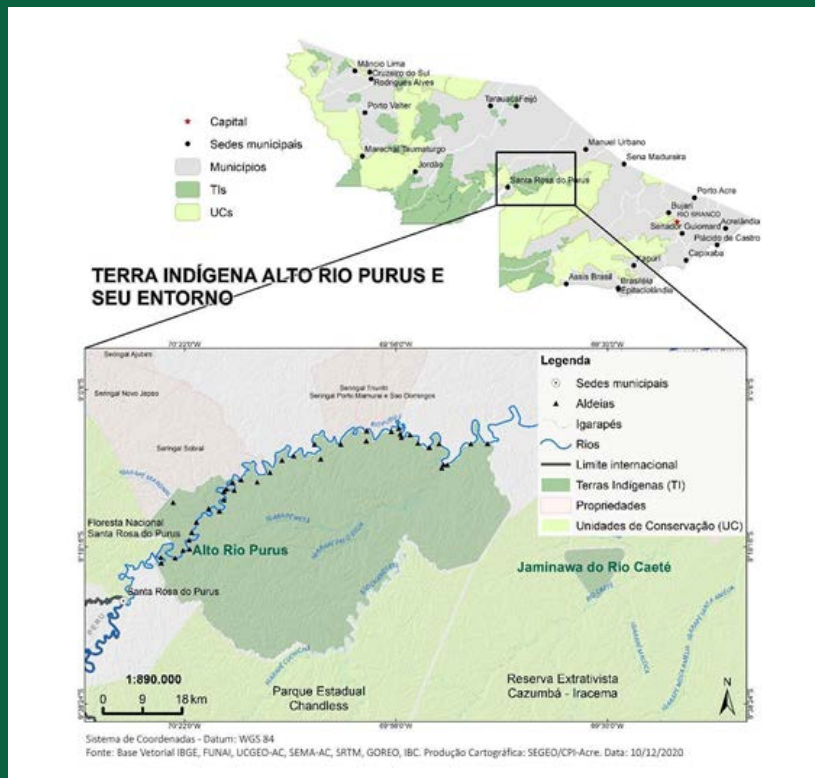


Figura 9 – Territórios de intervenção do projeto Amazônia 2.0 no Brasil: TI Alto Rio Purus.

Poroso Hapha Tshijne waneya 263.129 hectares (ha) 1996-ni rimatyehitkatka. Hepi hixatshine nerune hwalu wane tshijne: Huni Kuí Pano nruha yanumaxikatshine hiyrunu Madija, Arawa nruha yanumaxikatshine. Secretaria Payineru pejnu hislahatshine (SESAI) hiyrunu Secretaria de Estado de Meio Hwikowakkaka Hakri hajeru (SEMA-AC) tshinre, ptowruneko raptowruna 1.871 pejnuna 44 poktshikaka, 21 poktshina Madijane (7 poktshi município Manoel Urbano sreta hwatshine hiyrunu 15 poktshi Santa Rosa do Poroso sreta hwatshine) hiyrunu 23 poktshi Huni Kuí (Santa Rosa do Poroso sreta hwatshine). Wala Santa Rosa do Poroso sreta hwatshri hiyrunu Manoel Urbano-yma hyopto tshijkakna tkatshi hichpajyawaka sreta Hichinikanuweyehixikowaka de Assentamento Santa Rosa do Poroso, Parque Estadual Chandless Hocha Hajerkaka Kochpajikowaka Cazumbá Iracema hiyrunkoxa tkatshi himxijyawaka sreta konruha ne nwakkaka, fazendas, hiyrunu colocação kaka Poroso hapha wnaha hwatshri Santa Rosa do Poroso município hiyrunu Manoel Urbano município-te.

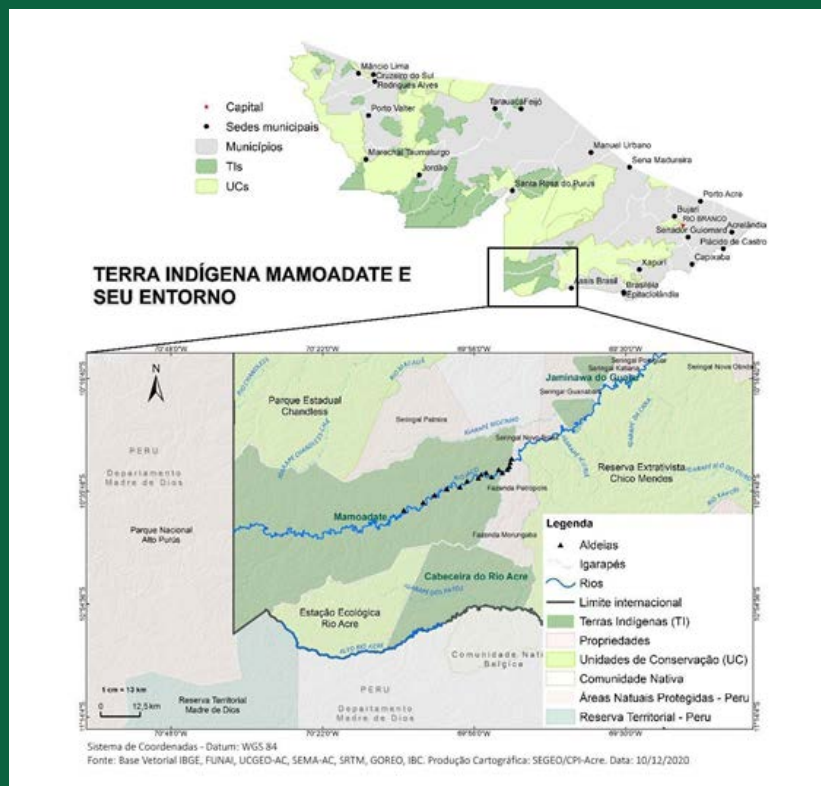


Figura 10 - Territórios de intervenção do projeto Amazônia 2.0 no Brasil: TI Mamoadate

Chima Mwajnutu Tshijne timatyehixikowakatani 1991 wane rawna Yaminawane Pano nruha yanumaxikatshine hiyrunu Manxineru, Aruak nruha yanumaxikatshine, hiyrunkoxa hochá hajene yapawakleni. 12 poktshina Manxinerune há raptowrurna 1.016 yine hiyrunu 4 poktshi Yaminawane ptowruko raptowrureyna 195-na (CPI-Acre, 2017) Tshiji tsernu rimwalerna 314. 647 hectares wale tshiji rawyawaka sreta hyoptokaka tshijnexyawaka sreta patshijneneyma ruchpajyawaka tkatshi sreta Estado do Hakri há rumxijyawaka tkatshi sreta Departamento de Madre de Dios, Perú. Hiyrunu yine tshijne Parque Estadual Chandless-yma hyopto tshijkaka tkatshi himxikyawaka sreta, há Hakri Hapha Jiwuta Tshijne hpastate sreta, rawa Reserva Extrativista (Resex) Chico Mendes hiyrunkoxa Estação Ecológica Hakri Hapha hajeru tkatshi hichpajyawaka sreta rawa.

Wale tshiji hislahpotutkalurni pahixanu hochá hajeru hiwekle himaxyehixikowakni (mosaico), município Sena Madureira hiyrunu município Assis Brasil rawa wale, wane ruslahika ptowru wane hwatshri há rimatyehitkana hijhakalune rixyawakna ruslahikowakapna ptowru hiwekatshri wane hwatshine, nikalune, hochá ho kchana, wenu, rapha hiyrunu koxa hipowhane ptowru wane hwatshri.

Tshiji pastate sreta Perú -yma yoptokaka tshijixyawaka runapletkaka Parque Nacional Poroso hajeru hiyrunu tkatshi hichpajyawaka sreta-yma Reserva Territorial Madre de Dios. Perú hajeru Yokanatatshri himatyehitanruni wale tshijne.



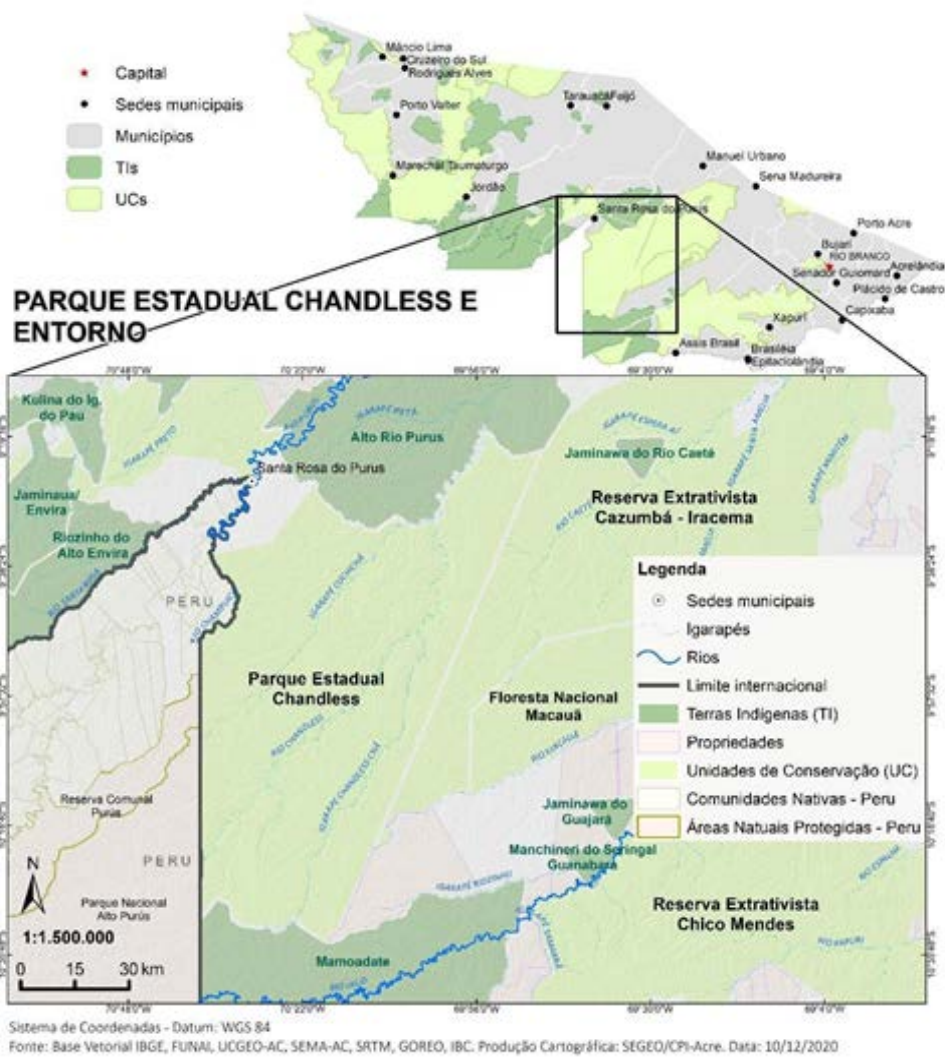


Figura 11 - Territórios de intervenção do projeto Amazônia 2.0 no Brasil: PE Chandless

Parque Estadual Chandless 2004 tshininrini himatyehitkalurutkani wale, waleni satu hislahikowaka (UC) waleni ptowruka hepixikaluruya SEME-AC hislahanruni.

**Waneylu 695 mil hectares pso tshijne, htsernu tshiji rixyawaka tshinanu mapa município rukchijika:**

Santa Rosa do Purus, Manoel Urbano hiyrunu Sena Madureira. Hyopto tshijitanunni tkatshi himxijyawaka Poroso Hapha Tshijne;

tkatshi hichpajyawaka Chima mwajnuto Tshijne sreta;

ha oeste sreta Peru tshijne sputa peruanone koxa hislahyawaklu: Parque Nacional Alto Purus hiyrunu Reserva comunal Purus. Hiyrunkoxa leste sreta Reserva Extrativista Cazumbá-Iracema.

Satu unidade de Conservação rixyawaka hiyrunu hislahkaluru potu rixyawaka, Parque Chandless seyini wane rawna 12 ptohi hirtshine pnunnu hixa hixannutatshine, pimrinni panerune, peruanone hiyrunu nordestinone (SEMA-AC, 2008). Wane hwatshine hixhohnepotuko wane rawatkana wanna.

Mapa tshijneko Estado do Acre maha tshijnemxyawaka hwa, hyapa tshijnexyawaka internacionais departamento peruanoya Madre de Dios hiyrunkoxa departamento boliviano Pando.

**Hanurni tsru jhamlerkaka nyi tshijnekakaya?**

- Satu hatnuhapo 270 km pchinirutu rowuknuya Inhapari hiyrunu Puerto Esperanza hichpajikatsripa Brasil hiyrunu Peru yoptokaktshijixyawaka yapamtatshripa.
- Himwastsirune hixo poyi kamnanetatshine, haluka pohirewnaletatshine nikalune hiyrunu chima mahaxyawakpatka hiyrunkoxa wenu raphakaka himtukhaxikowakpatka.
- Satu hatnuhapo kotpukoklunpatka hahmuna stsihi kochpajikowakpatka, tsru kojwawaktshi hwanutka ptowru hislahakanaxikowaka wkamhajekanatanrukaka, hiyrunkoxa pnunnu hixatshine yine wale hapo yapanutka metjejetkone.

## **Wethatanru:**

*"Yankalu Huni Kuí neruneya kihlerpotni. Pnumnu hixatshri nikalu hochá hajeru hwalu Poroso Wenne Tshijneya, seyni xawaknitka pakatpejnu howukacpotu hyamtatkana:*

*"Hewimka rawa ptowru hixatshri nikalu seyni kyapre hikchikkotkalu. Pakatkakako mturune yanka seyni hikeko rawapna, hikeko hwatka, phuta? Hewi hixa tshkotpotu wnika, kina, mtshira, pejri, ksapejri. Satkaka walenanwaka yankinawa, hi hkanipretlu. Hnikleru tsonu tshinanni. Pakatako sato pejri tsonu puylatapini, walenukani hwuheneneyma hniklerupa. Xawakni tsru nikalu hiylatkoklunu, wane halikaka hkaniprexika, psoji hewi psoji klanu, satu mrixí ho jema rixini. Waneyakni hi hsalewna. Ptowruko wwa. Waneya, rixkapi jixirjetka chiji hiyrunu kakwalu hiwlahle rixka, ponikpotuklu. Pakatkakako wale kamhaka jema ho kchoteru tsru nikalu hixkapi".*

*Tsru Mário Kaxinawa, Poroso Hapha Wenne Tshijne, Chinikantshi Tshiji Hislahlu Piranyehi hwikolu Poroso Hapha Wenne Tshijne, 2016.*

## **Pnute wimatano:**

Kahontshikni hetlu yeyixatshri, rimaxyawakaplu hyeyixle, remetyo hiyrunu hpinixikolu walekni hitskalakanru. Waneko pixka rixa wtshijne wexiniklunu, wetlu hanu rixatka hochá, nikalune, chima ho hjihlokkahe wtshijne ho pimri kojwaklewlukaka hatnu pixkalune estradas wumukata himtuwna hiwekletjeru hiyrunu wixannu hiwekle.

## **Kamrurtshine – Rumukata himatjemikowakpotu:**

Papirana pyonatanu hanunni kojwaklewatatshinpotu ptshijneya há hanu rixa kamrurewletatkana poktshi hajene xyekaka pejnu mamuknohyawakanupa

## **Hepi rixinri pirana – Hislahlu hiyrunu Rexikowaka Tshijkaka.**

Wynuwaka yanumle piranaxinri Hislahlewlu hiyrunu Rexikowaka Tshijkaka ha rimatjemikowakpotu xye tokantshi waleni **Rexikowaka** hiyrunu **Ruslahikowaka**

*Ruslahikowaka waleni satu hetjerewlu yine kamhaleru rimaxyehixikowakapa hanu rixatka ptowru wtshijne hajeru, rexikowakapa poktshirhe hislahlu ho hnikatanatkaluna, ho hpowratyehitkahe ho hyoxikachatka, ho hpitshotachatka. Ptowru mhaleko wuslahanru, hi rumukata pakatapka hislahkota, ptowru poktshi hajeneyma kamrurewatko, petjetanru hocha ho wenu, hipowha, rapha, hsana, yankawaka, chimahawaka ho ptowru tshiji hetjeru.*

AAFI Josimar Pinheiro Sales, TI Kaxinawá do Seringal Independência, X Curso Rasrujikowakna kochpajikaluro piranni AAFIs, 2994 kamhakaluro. Arquivo CPI-AC

*"Rehapoxikowakpatnaka hepixa hislahletanru rimaxikowakapa hanu rixa yapletna droga khanikaklerune, hiyrunu nikalune ktshowhuklerune kchana ptshe ho hahmuna stsihi".*

Tshi Hislahlu hiyrunu Hwikowakkaka Chima Mwajnutu Tshijneya, p. 79, 2016.

Nyi hinkakletlukaka hethatkalurupni hiyrunu hiyanumsatkalurupni rumukata himatjemikowakapa tshijkaka hislahlu pirana. Panerune mitshikananu hinkakletlerutka, waleyma wimatjemanru klunerni Panerune Pejnu Tshijne hislahlu pirana.

## **Wimatpotutanru:**

### **Ruslahikowakapa Panerune pejnu Tshijne Hislahko**

Pnumnu hixatshri tsjijkaka sajruklu wtshijne tnumne, rawa Estação Ecológica Hakri wenne hwatshri, Hakri Hapha Jiwuta hwa Tshijitatshri, Hixo poyine kpurataklerune Peru hajeneymakananuko. Chima Mwajnutu Tshijne pakata kojwawaktshitkani, seyni xawakni wkhawakachata panchinikanurune wixa hislahle kamrurexyawakapa. Wuchinikanuwata wynuwaka hislahlexyawakaplu wtshijne psolu mhaleko, tsruhkakaklu há mhalkakaklu, wpalihatano wetjexyawakaplu hmaha kastakle hapoxyawaka. Rehapotkoklunpatnaka

wale hepixanru retjexikowakapa hanu hyapna droga khanikaklerune, hocha hajeru nikalu ktshowhuklerune, hahmunkaka khahmunaklerune stsihpotu. Rehapotko pchinika kastaklu hapo, waluklu sato helicoplero-yma wepixikowakanapa pahixanu hiknohininapwu. Xye kamrurtshi kamhako ptowru Yaminawane hiyrunu Manxinerune.

Wuslahyawakaplu wtshijne wma jihlokyehixikowakapa narcotraficantene-ya, kahmunastsihiklerune, kchimahaklerune hiyrunu kyahkaklerune, ruhletkatka.

1. Hijhanru pahchinikanurune hixyawaka polícia Federal yma, ejército, IBAMA, IMAC hiyrunu pimrine himukatatshine.

2. Rasrukpotutkona tshiji hislahatshine.

3. Rehapotkotnaka Chima Mwajnutu Kastakle Hapo.

4. Chima Mwajnutu Kastakle Hapo rutakko hahmuna ptshe kwenuru (yopo, cedro, tlokana) rimaxikowakapa kastaklu hapo.

5. Rexikowakapa hiyrunu rimaxikjexikowakapa wtshijnekaka Manxinerune hiyrunu yaminawane paksurkaka retanruna.

6. Ptowruneko wtshijne jihloka piratatshine mitshitkone wtshijne kamnitatshine: narcotraficantes, hahmuna stsihi kamhaklerune, kyankaklerune hiyrunu kchimahaklerune hkachitkoklunupna tsrukakalune renakkona.

Chima mwajnutu hichinikanuweyehixikowaka pirana rawika xye pirankaka, 2016,p.79



Figura 12 – Prof. Lucas Manchineri e lideranças manxineru durante a oficina de monitoramento e vigilância. Foto: José Frank, CPI-AC, 2015

Constituição Federal tshinyawaka, ptowru payri rutshixika hyotnejyawakaplu hwikowaka hajerka rumukaxyawakapso hiyrunu koxa katuktako himukata hislahletlu. Ptowruneko wane hixanchinikanuta, rumukata kihle hiwekle rixyawakapa wale hiweklu ptowrunenni.

### **Rixa hislahlexikowakaPanerune pejnu Tshijne hiyrunu** Unidade de Conservação

- Hislahlewlu waleni satu hchinikanu ruslahikowaka ha wale kamhatshinni hetjerewqatatshine tshinkalune, seyni koxa poktshiyamananuko hkamhaka, repixa hislahlexyawakna metjejetkone ma jihlojyawanupa wtshijne hitokote, hiyrunkoxa wyaptshijnexyawaka hislahatshine.
- Hislahlewlu waleni satu hchinikanu polícia pixkonuyma, wane potuko hixa piranatshri tshinatshine, tsrukakalune tshinyawaka IBAMA, FUNAI, IMAC, hiyrunu INCRA. Wane hixatshri hetjerewlu hwini hma kahwakpiratkoklunu wane potuko hixa piranatshri (lei) hiyrunkoxa Força Armadas (Exército) kamhalu, Polícia Federal hiyrunu pimrine tsrukakalune himukata hetjerewlu kamhaletatshine.

Panerune tshijne pejnu hiyrunu panerune pejnu rumukata kamhaletluna tshiji ruslahyawakna hiyrunu runkakkona Yokanatshri hayinetene. Yine hislahachatluna ha governo wale waneylu retjejiyawaklu.

### **Kochpakka mmunanhakotu kihleru tokantshiykaka**

**Hislahlewlu** – yinuwakakamhaletkaluru hepixluymapanerunepejnu kamhalerutka htshijneykakakna. Pnumnu rixa kamhaletka: pahohnekaka hkamhalerna, yankalu, chimahlu, ha pimrikaka. Seyni koxa rumukata hichinikanuwyeletka poktshiya rumukata hetlexikowakapa marcos hwiywaka, rehapotkoklunupa, hiyrunkoxa hanukta hjihlokmukataxyana tshiji jihlokipiratashine.

**Hetjerewlu** – Hepixa hislahlewletatshine Estado himatyehitanune, Polícia Federal, IBAMA, ICMBio, IMAC, Polícia Militar, Exército ha pimri, Hpohita piranaxikowakapa.

**Rakanhiyawaka: Poyankaklukaka hixako wtshijne hiyrunu panerune pejnu pirana himatatshri:**

Satu himkatlu stsi hwatshinwu (direito) Brasil- ya /Pereira, Luis Fernando. Rio de Janeiro: Meseu do Índio: IEPÉ: FNMA: MMA, 2010. 1ª reimpressão, 2014.

Nyi chinikantshine pirankaka hislahluya hiyrunu hetjerewluya wanepotuko rixamtko hanukta rawa xye tokantshikaka wane rawa Yokanatatshri poyankakleru.

**Decreto Nº 7.747, DE 5 DE JUNHO DE 2012:**

Política Nacional kni hetlu Hislahlu Tshijkaka hiyrunu hwikowakkaka Panerune pejnu Tshijne – PNGATI, hiyrunu pimrikaka muknonkatuwa.

**DECRETA:**

Ap- A PRESIDENTA DA REPUBLICA, no uso das atribuições que lhe confere o art. 84, caput, incisos IV e VI, alínea “a”, da Constituição, tendo em vista a Convenção nº 169 da Organização Internacional do Trabalho – OIT, promulgada pelo Decreto nº 5.051, de 19 de abril de 2004.

**SATU PIRANYEHI**

Art. 1º Política Nacional Tshiji Hislahlu huyrunu hwikowakkaka Panerune Pejnu Tshijne yinuwajibolni – PNGATI klu, rexikowakapa halikaka hijhakaluru rixyawaka hepixlewlu, wimwiyawakpatnaklu, ruslahikowakapa hiyrunkoxa hana rixa hwakotanu ptowru hixatshri pahixanu wtshijne hwatshri, wuslahanru ptowru hixatshri wimwaleru, kikhe hiwekle wixyawakapa hiyrunkoxa wumukata hixolewnalex yawakapa wixannuko hiyrunkoxa pimrine hinamtatshinewa hnapu panerunpejnu, hkahwakpiratanru hkamhaleruhixannu, htshina piranyehixikowakatka.

Pimrikaka hali kamhaletkalurutka wane pixka rixa yimkota hiyrunu hyanumsaxyawana, hpohixikowaka tshiji hislahikowaka hiyrunu panerune koxa hislahyawaklu tshijkaka.



**Art. 3º Walenwa PNGATI hchinikanu:**

VI – Tshiji Hislahikowaka, hwikowakkaka hiyrunu kihle hiwekle rixyawakapna panerune pejnu hiyrunu paneru pejnu tshijnekaka;

VII – Tshiji hislahikowaka, hwikowakkaka hiyrunu hicha hajene muchpakkane mahkone yapjexyawaka tshijne hiyrunu hehichpaklune tshinanu.

X – Rimaxikowakatka, hijhakaluru hiyrunu kihle rixyawaka hwikowakkaka gislahikolu pahixanu tshiji hislahapi hepixluya ruhlexikowakapa hwikowakkaka rakanhiyawakpatnaka, wixannukaka há kihle hwalecha wixyawakapa wipoktshiykaka.

Art. 4º Halukalurkaka hijhakaluru potu PNGATI ya, hepixlewlukakaya, wannani:

I – Eixo 1 – Tshiji Hepixlu ha ptowru wane hwatshrikaka:

a) Repixa kamhaletanru, retjexikowaka, rinoxikowaka hiyrunu ruslahikowaka Panerune pejnu tshijne hwikowakkaka há hmahle sputkaka;

b) Repixa hepirexikowakna panerune pejnu, potshikaka hiyrunu panerune pejnu Ptohi hepixle hislahle hwikowakkaka panerune pejnu tshijne, hkahwakpiraxikowaka policia-ne kamrure pixkonu hiyrunu pimrine tsrukakalune himukatatshineya.

c) Repixa hislahletko ptowru potuko hocha hajerka panerune tshijne pejnu hwatshri hkastakhapoxikowakapa, tsrukakalune tshiji pirana hislahatshine poktshi-ymakananuko hiyrunu panerune pejnu ptohi hepixle.

d) Repixa kamhaletko, hpohijeta piranaxikowakapa panerune pejnu tshijne hwikowakkaka panerune pejnu hetanuya.

Fonte: [http://www.planalto.gov.br/ccivil\\_03/\\_ato2011-2014/2012/decreto/d7747.htm](http://www.planalto.gov.br/ccivil_03/_ato2011-2014/2012/decreto/d7747.htm) acess 12/11/2000 hwakaluru



## 4 RIXINRI PIRANA – REXIKOWAKAPA PANERUNE TSHIJNE PEJNU HIYRUNU

Unidade de Conservação

**Hatnuhapkakangamhikolu**, hixokata, ruchinikanuweyhitkapanerunepejnuyahiyrunu payrine hochaheneksatshijixikalune ruslahyawakapluna, pahixanu kihleru kamrurtshi hepiklewatatshri rixyawakapa poktshiykaka, satu hatnuhapo kotpujikowakapa seyni rixikowaka waleni satu khamleru potuko poktshikaka tshinanu, wane rixinipa repixanune tsonupni khahmuna stsihiklerune, empresane petróleo kochpakaklerune, orohaklerun, há pimrikaka, tsru kojwawaktshi tsonu hakanikakatshri hwikowakkaka, hochakaka, ptowru wane hwtshri himtuka hiwekletatshri .

Hyoptokaka tsijnexyawaka stsi hwatshine koxa hetlu jihloktshijru Hmahtshijnemxyawakatka. Hakriya wenpotu kanipretlu patshijnekaka, ha Estado nchinikanu retlu myapretpotni pnute ruhlewaxyawakapa hwikowakkaka kojwaklu panerune pejnuya.

Kojwawaktshi.

*"Tshiji hislahikowaka tshinanu rimathetka pimri kaheknanuwlu waleni: hahnuna stsihi kamhaklerune, tsru hatnu hapo yotpujikowaka, kapahiru kamhaklerune jihlojyawaka rapha jiwutaykaka hate panerune tshijne pejnu rapojyawakna. Manxinerune hiyrunu Yaminawane kamhalu retjexikowaka wtshijne ptowruneko tsrone ho mturune. Ptowrunwko himatjemlu "hislahlu" htshijneya. Rujhalu repirexikowakna FUNAI, CPI-Acre hiyrunu ICMBio, yoptoxyawakaplu pahixankakahijhakaluru rumukata kamhilowakapa wale hanu wumukata hixa kamrurtshi hetjerewlu hiyrunu hislahluya. Waluklu wasrujikowakana hanu wixa kachretanru wale kamrurewapikaka, wtshijne yokanatkalurupa. Wujhalu pimri hejnu waneyawixyawakana: Alumínio kanawa, motor, toha há pimrikakoxa. Pamhalkaka hepkata retjetko wtshijne, satu reyinuwakle mhale ha satu hmahle mhale. Tshiji hislahlu kamhakoklunu kihlekoxlu tsru hatnuhapkaka rexikowaka".*

*Kasruklewakleru Sebastião Yaminawa, Chima mwajnutu nama Poktshi, mitshikananu Rasrujikowakatkana Ruslahikolu pirana hiyrunu hislahluya Chima mwajnutu Tshijneya. CPI-Acre, 2015.*



Figura 13 – Prof. Sebastião Jaminawa falando sobre os possíveis impactos com a construção de estradas e ramais no entorno da TI Mamoodate. Foto: José Frank, CPI-AC, 2015.

### **Wethateru:**

YAHOTKAKLU HIYRUNU HETANCHINIKANRU

Rawa hixo pnunnu hixatshri hetanchinikanru hwikowakkakaya Madijane kamhajetanru hiyrunkoxa Huni Kuî-ne. Kamhakarurpotkakni chimahlu, yahkalu, hahmuna kochpajikolu, tshowhu himatkalewlu “tlolo kampô tshinkaluroya” hiyrunkoxa katshwuhalo hanijikowaka pimri poktshikaka.

### **Pimri yanumsalkaka rujhalu hyokmajikowaka:**

a) katshwuhalo tipekoxikowaka chima Madijane poktshi Manoel Urbano stsi hwatshine;

b) katshwuhalo chima hipekjetatshine poktshikaka wannani Paxiuba hiyrunu Maronawa Santa Rosa do Poroso stsi hwatshine.

Mapa rimathexika hanu tuchankajexika hirkaluro katshwuhalo (poktshikaka município de Santa Rosa stsi hwatshine hiyrunkoxa Manoel Urbano stsi hwatshine). Xye mitshitkotkaka katshwuhalo hichanru pirana wtshijneya hi xawaknikotkani mitshikaka yonatkaluro pirana-mta tshinre (Retjetkoklunutka hwikowakkaka kojwakle yonawahlo tshiji hochi piranyehkaka yine piranako himatpiranyehitatshine Jose Batista Macêdo hiyrunu antropólogo Marcos Pellegrini);

c) Poktshi mwakane hi ritshitkana hchimahaxyawakna Chandless ywaha hjihlokjetna hchimahaxyawakna;

d) Hepi pirana hyonaxika tlolo kampô tshowhuxikolu, wanna poktshikakni: Nova Família, Nova Aliança hiyrunu Nova Jericó. Hepi argentino-ne yihaple hchinikanu tshowhuwluya;

e) Kawene-yma yankalu. Nikalunni hkonkana Secretaria Municipal de Educação de Santa Rosa do Poroso kosekatshri;

f) Hixo rixyawaka Hoyakalu pirana Hinkakletatshine xye wtshijne, Peru tshijne hiyakjexikatshine.

Tshiji pirana hichinikanuwyehixikowaka ha ruslahikowaka Poroso Hapha Tshijne, 2016, p.23.



## **Kamnirowlu hiknohlu hahmuna stsihi kamhakleruneya Parque Estadual Chandless ya**

PEC, noroeste sreta Santa Rosa do Purus Poktshi nwaka, rixannu kamnixikowakni hahmunkaka UC tsru potkakakni kojwawaktshi hahmunni kochpajikowakana. Xye sreta tshijne hepe kata rixinri retjexikowaka tshiji ptowru hixantshi hwiwaka. (AER), satu kilometro yanru pamyo rixinri kastaklu hapo wexyalu 11 pixkalutu serejeira, amburana, cearenses, walekni hahmuna Hakri kamhakalurpotu. Rawa satu hatnuhapo Santa Rosa Poktshi hichpajikatshri hate 18 kilometro pchinri wale hapokni hyapjejetna wale pejnu kamhajatatshinehyrunu satu Hitaklewlu chinikantshi kamhatshine assentamento INCRA ha wane hi hiwukaylu PE Chandless tshijne. Wanepotuko hike hislahlu hi retjetka hate xawakni wane psojite tshijne, jhamleru wanecha sreta tkochpajikowaka hahmuna stsihi tshipetkaluroko UC tsru potuko.

Parque Estadual Chandless Hichinikanuweyehitkoklunu piranyehi kochpajikalurni xye psojite pirana, volume 1, 2000, p. 168.

### **Kamhakalurupa:**

Hmahle hohne, satu yanumsalu kamhako Parque Estadual Chandless hiyrunkoxa panerune tshijne pejnu pixka hixatshri, rixa hislahlexikowaka tshijkaka pixkalutu. Satu kihleru hiynumsakaklu rixyawaka SEMA-AC hajene kihleru htshanixikowakna ruynumsaxikowakapna tshiji suslahaklerune Peru hajene (Sernanp) Parque Chandless hajene pirana kochtshejikowaka, hixo pahixanu hiwekle hislahikowaka, htshinikowaka piranyehi hwikowakkaka, pahislahkolutu rixikowakapa wtshijne tnumne hwatshineyema.

Pamyo rixinri pirana – Hkamhikowakapa retjejexikowakapa hohneru piranyehi

*"Hepi neruneko ( Manxineru hiyrunu Yaminawa) pa hikamrurewkakalunepni, wane hikamtu. Hislahlu kamhakoklunupa, wichinikanretlu, Laranjeira poktshiya hate hmala, Yaminawane yinuwananru, ha wane pnute hawakate Manxinerune hislahanutkalu wane".*

*AAFI Francisco Benjamim, Senegal Poktshi, Mitshikananu hasruklewlu Tshiji Hislahikolu pirana Chima Mwajnutu Poktshi. CPI-Acre, 2015.*

Ruhlepokoxikowakapa hanu rixa kamhaletko hislahlu hiyrunu wanerutu rixikowakapa, hijhakilurni ruhlepokoxikowaka, hijhakilurni ruhlepokoxikowakapa hanu potu rixa kamhaletko, munanhakalune, hkahwajikowaka hanu hyinu wajinrina panerune pejnu hiyrunu wene wnaha hwajetatshine hyinu wajyawakapluna tshiji hislahlu, retko hanu potu yapjejetna wtshijneya. Hijhakilurni panrune pejnu hiyrunu poktshikaka hiprukanu hiyrunu runkakkona hipoktshiruyana xye kamrurtshiya, klu tshinanu hi pnuko rixpiranata tshiji hislahikolu, rexikowaka, hwikowakkaka ho pahixanu kamhajexikowaka. Wale tshinanu kihleru satu hiynumsakaklu, runkaklexikowakapa hanu rixa pnute kamhaletko ruslahikowaka hiyrunu katu himukata wne yaleta.

Hiyrunkoxa kihleru romkahi piranaxikowaka ruslahjexikolu hiyrunu leis respeito de políticas desenvolvimentistas, rumukata hakanhaleta kamnirewlu xye tshijneykaka.



Figura 14 – Lideranças Jaminawa e Manxineru organizando e identificando impactos e as ações para monitoramento. Foto: José Frank, CPI-AC, 2015

## Kamrurtshikaka – Rimat- jemikowakapa:

Paxkehkaka yinuwaka kamhalexiko, wla htshina hepomletko:

### Pyonatanru kamnirewlu rumukata hislahikowakapa:

- 1- Klu hiwaknihe Tshiji ou Unidade de Conservação puslahjetanru?
- 2- Hanu hixatshri kamnirewlu peta?
- 3- Pyonatanru petleru:

Rali kamhaletkoklunpatka kamhakanatatshine himukata hihlepokletanru mitshikananu kamrurtshi kamhakalurpatka ruslahikowaka xye hepomlukakaya tshiji nwaka rixa yonhaxyawaka:

Kluhe his- lahko?	Hanu?	Kathe wane hwnu?	Hiklu?	Klunhe hijhakaluru hyinuwka kamha- lexikowakapa?	Kluhe wixan- ru wale pirana kamhakaluru?
----------------------	-------	---------------------	--------	--	--

## Patsrujire rixinri pirana – Himatkalewapikaka poktshi hajene hislahyawqkapa

Tshiji hislahlu kamrurtshi pirana jihloklu timata yotnaxikowakapa himatkalewapi, hiyrunu yomuwa tskeroji rumukata hinkaklexyawakapluna halikakalutu pirana pnumnu hixa kojwaklewletatshri. Rawanu hihohnerpotuko runkaksaxikowakapna hanu tixa kachitkota ho yotnetkota aplicativos open source (código aberto), rumukata hapatjetkota pnumnu rixikowakapa telefoni-ya celulares, hiyrunu hihlepokotkaluro panerune hiyrunu wenu wnaha hwatshine kihle hapatjere rixikowakapa tshiji pirana hethalu hinkaklexikolu.

### Himatkalewapi piranankaka hinkaklexikolu

- Howukako ruslahikowaka satélite hekhi mayawlereru;
- Hani tixa yotnetkotanu tecnologia hwikowakako hislahikowaka
- GPS; yotnexikolo
- Celular hiyrunu drones hanu tixa yotnetkotanu.

## **Wethatanu:**

*Tecnologias xye hohnekaka ratskopotumta himatkaltshi ha hixa panerune pejnuwu womkahi himatlemtanro, walani payri himatkalewlwya, há hixa wtecnologiate tkatshi hichpajyawaka hiyrunu rumxijyawaka, pnumnu wixa himatkalnutkoxa hixa hanu rixa kamrurewleta, satu yapkaklu mapeamento: panerune pejnu htshijne hitokoteko rawjenatna, hanu rixa mapeaetluna hsana hkamhiyawakapna, wutsrukateni hanu rixa mapeaetapna hma kayikachaxyaluna hahmuna rapha stsi hwtshri, hi rumukata hichwurechatna hanukta rawa kchana yeyixlu pniri hi rumukata yotnekkota ho ruchwuxikowaka, wale ptowruka wutsrukateni mapeamento hixyawakni. Xawaknitka hkoseka himatkaltshi há pakatkaka ruphujewnakananumta pnumnu hixatshri wma yaprewa hislahlexyawakaplu wtshijne. Xawakni hanu hixatshoktako telefone, aplicativo, internet walani sato myapretpotu seyni koxa tsro jhamlarni, tumukaka heneklewleta seyni koxa tumukata nikatlewlexya xye herotu hiweklu, psoji kihlarni seyni koxa psoji hektutoyni internet. Wetanru kihlewaka wtshijne tshinanu, ptowruneko himwatko celular, hita waneya sato ha naluka yotnerpotutlu aplicativo. Ha klu tshinanu? Nimaxyawkaplo hanu nixa homkahletanru hakanhatshri pirankaka, womkahixyawakkoxaplu ha wimata kaniprexyawakaplu.*

*AAFI Marcos da Silva, TI Katukina Kaxinawá, 2019. Rimata hislahyawakapna ha hanu rixa hislahletko tshitshi wale pejnu rasrukoklunna pirana hkochpajika xye piranyehi. CPI-Acre, 2000.*





Figura 16 – Monitores da TI Alto Purus e PEC Chandless, conhecendo os smartphones para o monitoramento. Foto: Alda Lúcia, 2019.



Figura 17 – lideranças Jaminawa conhecendo os aplicativos GPS Status e taskfield no smartphone. Foto: José Frank, CPI-AC, 2020.

Pimri kamrurewapi koxa mahatatshri rumukata hekhixikowaka kamrurtshi wumukata waneyhixleta, mitshikananu rasrukkoklunutkana rasrukkana hanu rixa kachretanrona wanna AAFIs. Walakakni: mapa temáticos panerune pejnu tshijneya, ha pahohnekaka hkamrurna pirana hyonaxinrina.

### **Kamrurtshi:**

Rali hetkoklunpatka kamrurewapi tskerojikaka, hyinuwaka kamhakotanutka aplicativo kamhiyawakpatkana. Hyinuwaka kamhaletanrupnina smarthonos hiyrunu aplicativo de tecnologias abertas (formulários taskfield, GPS status hiyrunu plataforma SMAP), rumukata hepixa hislahikowakapa panerune pejnu tshijnekaka.

### **O aplicativo taskfield celular hojiko rekhixyalu hepomhalkaka:**

## **KAMRURTSHIKAKA HAKANHAJEMTATSHRIPA**

Hapatjewaka ruhlepokoxiko hanu rixa kamrurewlexyawakapna pahohnekaka, paxkehi tshiji khetjeklerune kamrure. Xye kamrurtshi hohnekaka rutakkotka hi papkokakapni pamhalkaka retjejexikowakapa, paxkehkaka rixyawakapna papoktshikaka hajene, poktshikakahalujyawaka.

AAFI, himapokpiranrerupa hkamruryehna, poktshi kosekatshine, suxone, maklujine hiyrunu pimrine panchinikanu rixanutkana ( pnumnu hixatshine, pixkakaklu hiyrunu hyinuwakle – yaholu mtserutu kojwawaktshi kyankakleruneya Towutatshri hchinikanuya kamhikowakapa hipowhakaka, hatnuhapkaka ha pimrikaka.

Kihleru ruchinijikowaka tshiji hislahikowaka panerune pejnukni hihletlu wale, pakatkakpejnumnu hkamnitkoklunutka tshijkaka. Rujhaka ranijikowaka hipirankaka kapidanyehi rixyawakapa rumukata hexikowakapa rixonu hiyrunu rixannu, hmixkokikowakapa kamhakalurutka piranyehkaka hijhakaluru, (incidências) wyehiya pixkakaklu rixyawakapa Towutatshri estadual hiyrunu federal.

**Wane rixini, hixo kamrurewapi hinkaklewapi himukata kamrurewaxikota, aparelho celular aplicativo yma:**

- Mapas temáticos panerune tshijne pejnuya em escalas de 1:1.000.000 a 1:50.000 – hixo kata rujhaka payinpejnu tshiji suslahaklerune kamrurtshiya, re hichinikanuwiyehixikolu, hmahle patka poktshi kakoxa himukata hetletanru raluka hixlexyawakluna.
- Hipirankaka kaniperkaka - rakanha kamhakaluru hwini panerunkakluko tshiji suslahaklerune hiyrunu himata hislahlewatatshine runkakletluna hipirankaka ha kamrurtshikaka halikakalutu.
- Kamrurtshi piranyehi AAFI nenu – rekhitu kamrurtshikaka kamhakalurkaka AAFI neya, hipiranyehi tshinyawaka kamrurtshikaka hinkaklexikowaka ruslahikowaka htshijnekakna.

Pamhalkaka piranyehi hiyrunu dados do Instituto nacional de pesquisas espaciais (INPE) – pamhalkaka runkakletka hochu hichwujexikowaka piranyehi rumukata hetkota rexikowakapa hanu hochu hichwujetka panerune pejnu tshijne hiyrunu hisputacha. Xye pirankaka himatyehitka panerunkakyehi mapa pixkalutoyma em tabelas.

**Xye papkokakoxa hijhakalurni hinkaksakaklu rexikowakapa hiyrunu hyonpiranaxikowakatka kihle piranyehiwakpotu rixyawakaka.**

- Hkojiretkona panerune pejnu hiyrunu poktshikaka, hinkaklewapiyma hiyrunu hepiretlewatatshine kamrurtshiya, hixo katkaka runkakletka kamrurtshi kamhakalurutka hiyrunu rapatje piranaxikowakatka kamnirewlukaka, (invasões) hichwurucha/yoxjeru hiyrunu pimrikaka pirana wkojwakjerkaka wtshijneya pakatako Unidade de Conservação
- Panerune tshinanu hiyrunu wenu wnaha hwatshine celular himwatshinetka/aplicativos suslahakleruneya, hichinikjetanru hislahyawakaplu hyotnexiniplu hikamrurewapre (hinkaksatka hanu hixa hislahlexyawakaplu). Pakatako celular yma hwa mayawletlu pimrikaka, hkahwakpapkolutanru rujhakoklunupa hyokanaxyawakaplu. Wale ptowru pirana caderno hyonpiranatanru hichinijyawakaplu (AAFI kamrure piranyehi), ha hihohnerkaka hyonaxikolu hohnerkaka hyokanaxikolu.

Kihlekoxlu satu hipirana yonhamta yehi kamhikowaka hyonaxikowakapa retjererna piranyehna. Panerune pejnu tshijne muchpakkanewa hislahikowaka hiyrunkoxa hkamhaka hepomlukaka rimaxikowakapa yonpiranatkalurutka (waleyimalu).

## WETANRU

Wkahwaklu hixo xye pirana yijnakotatshine pahixanu kamrurewapi tshinanu hanu rixa hislahlexikowakapa herotu piranyehni pimrikakaya hetanru ( smartphones hiyrunu aplicativo), kihlepothetkolu xye heneka nchinikankaklu paneruneyma hiyrunu wenu wnaha hwatshineyama payrine jempirantapatshine, hiyrunu wanna tskala hetamtatshine/kihleru heoixlewamtatshine, pahchinikanurutu hixkaklewamtatshine hixannuntshiya ha hmixa hchinikanuxikowaka, técnica-yma hiyrunu tecnologías yma hijhakaluruyma rimata hislahlewaxinrina.

Chinikantshi hkachlerutkana hkamha pirana kanaxinixkaluna rasrujikolna tshiji suslahaklerune wannananwakako hexyawakpatkalu hanu potu rixa hislahletanutkaluna htshijnena wtshijne hitokote sreta ha wtshijne maleka sreta.

Jempatshine ho kamhapatshine yinuwaka kamhaletanrutka, panchinikanurutu rixyawakatka pahohnekaka ruslahikowakpatka hislanjexikowakkakatka hiyrunu retjejexikowaka tshijkaka, Ptowruneko potshi hajeneyma hapka hiynumsakanutka papiranatulu rixikowakpatka ha xye pirana poder público rapojyawakapa. Xye panerunpejnu hiyrunu wenu wnaha hwajetatshine payrine hapatjeru hkamhjetanruna pirankaka rujhalu romkahi piranyehixikowaka hanu rixa yinuwakletatka hate hmahle potuko, klu tshinanu hmixkotlu hixannutshi himatkaltshi hiynunkoxa política tshiji suslahaklerune hiyrunu hwikowakkaka xye tshijkaka hislahkalurutka.

Hkamhakoklunutka chinikantshikaka kamhakaluru potuko rixyawaka xye hasruklewluya walepni kamhakalurkakapa, walepni hijhakalu potu yiniwakatshineya kamhaleru ha homkahitkaluru potupa hiyrunu hepixkalurupa repixjeneymana ruhle hislahlexikowakapa tshiji hislahikowakatka hiyrunu politaca – nkaka xye hwikowakkaka jetjeklerune.

## WALEYMALU

### Ruhle hinkaklexikowaka-Hepomlu hasruklewatatsfri

#### TSHIJI JIHLOKLU

##### YAHKALKAKA

1. Hanunhe (rukchijiko/ rawyawaka)?
2. Hikluhe rakanha? (rukchijikowaka pwastsireru pkahwakanu)
3. Rakanhewhe rukchijikowaka (ho pakatako paksuru ho hepikata hixokata)
4. Kathe wanhixa? (pimwastsireru) Ruphujetka kosekatshri himaxyawaka)
5. Kluhe pyoptota (hijixipnane – hipjina, hihapna ho pimri koxa?)

##### CHIMAHLU

1. Hanhe (rukchijika/wenu)?
2. Hikluhe rakanhanu? (Howukchini ho xawakniko)
3. Rakanhewhe katuyma ruphujewniywaka (pakata paksuru ho hepikata)
4. Kathe wanhixa? Pimwastsitanru? Ruphujetka kosekatshri
5. Kluhe hyoptota (hijixipnana hipjina hihapna ho pimrikaka,)?

##### HAHMUNNI KOCHPAJIKOWAKANA

1. Hanhe (rukchijiko/ rawyawaka)?
2. Hikluhe rakanhanu? (howukchini ho xawakniko)
3. Hanhe wixa himathetletanru ho kathe hinkakanwu?
4. Rakanhewhe (katuyma (pakatako paksuru ho hepikata.))
5. Kathe wanhixa? Pimwastsireru? Pimathexyawakaplu kosekatshri?)
6. Kluhe hyoptota (hijixipnana – hipjina ho hihapna.?)
7. Klu hahmunnihe hkaykana?

##### PIMRIKAKA MITSHITKOTU (mjihlojyawakanupna metjejetkone

1. Hanhe (rukchijiko/rawyawaka)?
2. Hikluhe rakanha? (Rukchijikowaka hipapkolu)
3. Hanhe pixa himatletlu ho katu hinkakyi?
4. Hipejnu kata retka (pakata paksuru, hepikata ho pimrikaka.)
5. Kluhe hikchikka (hijixipnana – hipjikakna, hihapna ho pimrikaka.?)

##### YINE MUCHPAKANEWA

##### Najrapatkani

1. Kathe hetpatkana?
2. Hanu rixakanatna wale papko? (hyankakanaxyawakna, hyanakanaxyawakna ho pimrikaka.).
3. Hanu?
4. Hikluni? (klu hohne himukni)

Hijixipnana
1. Kathe hikchika hapotna?
2. Hanu rixakanatna wale papko? (hyankakanaxyawakna, hyanakanaxyawakna ho pimrikaka.).
3. Kluhe hikchikka? (hihapna, hipjikakna, pimrikaka.)
4. Hanu?
5. Hikluni? (klu hohne himukni)

## HEPI TSHININRI YONATKALURU – RUSLAHIKOWAKA HIYRUNU TSHIJKAKA HIYRUNU HWIKOWAKA

### REKHIXIKOWAKA

Kosekatshri waleni satu hapatjeru pnumnu hixatshineya ruhlepokoxwawaklu satu hwikowaka tshinanu, poktshi ho panerune. Hixo potu rixinna yine ruhletluna hkamhapiratanruna pahchinikanurutu rixinna. Wane rixa pnute hihlewleta poktshi ruhle kosekletkoklunu. Wane rixini poktshi ruhlepokotka ptowru potuko kamhapiratkaluru.

Tshiji hislahikowaka hiyrunu hwikowaka wane rixa panerunpejnu hiyrunu wenu wnaha hwatshine payrine pahchinikanurune rixa hislahlexyawakluna satkaka rawyawaka, hanu rixa hitakletanruna hniklerupna, htshijne ruslahamxyawakna, pnute wuhlewaxyawakapa.

#### **Xye piranyehi ruhlepokkatka patsrujire piranyehi:**

- 1) Wimatanutkalu kosekatshri hchinikanu: klunernihe?
- 2) Ruynumsakakanna hanu rixa kosekkotanu tshiji rawyawakna
- 3) Ruynumsakakanna tshiji rawyawakna tshinanu
- 4) Tshijkaka hislahikowaka piranyehi: Etnomapeamento, Koseklu piranyehi hiyrunu hislahlu piranyehi
- 5) Hmixkoxikowaka institucional: paxkehrune, pahchinikanurune hiyrunu cooperativa-ne
- 6) Políticas públicas koseklu

## HALUKKALURU

Xye psojtkaka Kosekatshri hiyrunu tshiji piranyehi hwikowakkaka rawa halukalurpotu:

1) Ripekohchinikankakanna pnunnu rixa hchinikanu xyawakna panerune pejnu tshijnekaka hiyrunu unidade de conservação wuchinikanretanru kihle rixyawaka wtshijne, ruslahikowaka hiyrunu rimata kamhikowakapa hochahajerakaka.

2) Punkakletanru kihler pirana pjemapanru poktshikakaya hkosejikowaka htshijnekakaya ruhlepokjexikowakapa, wale wkojwakjeru hiyrunu/punkakanna kihle piranaluru rixhiweklexyawaka wixannu hiyrunu pimrine hanihamtatshine.

## PAHIXANKAKA

### **Papiranyehi - Wimatanutkalu Kosekatshri hchinikanu: klunernihe?**

Kosekatshri hi wutuka kochtshekaklejixanru wtshijne. Panerune pejnu tshijne, Uma Unidade de Conservação, papoktshi hakanikakleru ho pimri poktshikaka ho paneru, município, estado ou país.

Kosekatsri waleni potukalu hihlepokotatsri, pahchinikanurune hihlepoko piranananru panerune ho poktshikaka tshinanu.

Womkahitanru, petyonhatanru kasruklewakleru Isaac Piyanko kamha piranreru, pahchinikanurune poktshi hajene, satu yapkaklu poktshi kosekatshri.

*Pahchinikanurune haptowrutatshine waleni satu tsru hijhakaluru rumukata himalexikowakakojwaklewawatshinehiyrunupmunanhanrupnuteruhlewaxyawaka panerune pejnu. Poktshi kihle kosekleru paxkenkaka rexyawakapluna tshiji hislahlu kamrurkaka.*

*Xawakni, poktshi kosekatshine rujhaluna rimatletanna pnu hajene tsru hitakkalune, seyini hi hituka kamruratanru poktshi hchinikanu. Rujhaluna pnu hajene hepixyawakna, Seyini hijhakaluru potni. Kosekatshri hi hhiwaka tsonupni. Kosekatshri rujhalu poktshi kamruru pakamrurawerunepni.*

*Pahchinikanuruneya rumukata kamhakota hejnu hijhalu poktshi halukleru hanu rixa hetkota hwikowakaka hipso hsankaka rumukata kamhaleta satkaka". Isaac Piyanko, 1999*

Hixo hayinere rixinpotu hwikowakkaka panchinikanurunni hkamha pirrerna hkamhiyawakapna. Wane rixna poktshi hwatshine wanna nanwaka kosejnawa hipoktshiyana (kamhapirluru) hiyrunu político hixannu. Wane rixyawaka político hixannu papoktshiya rutshitlu satkoxa jijnakoxyawaklu poktshikaka halukleru. Satu yapkaku Kosekatshri yijnakoxyawaklu política wannani tsru hapatjeru poktshiya, conselho hiyrunu seminários temáticos.

Panerunpejnu tshinanu hiyrunu rixa hiweklexyawakna, renekahchinikanuxyawakapluna kosekatshri ruhlepokoxyawakaplu poktshikaka hijhaleru, Rujhiyawakapluna kosekatshine tsrukakalune yehi waleni hasruklewlu piranyehi, powrawlu pirana hetatshine, hitaklu pirana hetatshine, nikkaluru piranyehi, honha piranyehi hislahatshine, ha política pirana hiphujtatatshri hitokoya, hiyrunu pimrikaka.

Reyinuwakle piranyehi psoltshijneko hwikowaka, poktshi halukleru rixa hislahlexyawakna, kosekatshine kamhiyawakatka. Walani sato munanhakaluro pakamrurewatkalune pahchinikanuruneya política hiyrunu poktshi jemikatshine.

A Declaração das Nações Unidas sobre os Direitos Panerune pejnu tshinanu, yonawahlo hijhakaluro pohijetkaluro pela Organização das Nações Unidas (ONU), rujhaluna pahijhakaluru rixyawakluna panerune pejnu kihle hiwekle rixyawakapna com os Estados nacionais. Wale pirana runkakletna wannananwaka ruhlepokye hixnawakna.

**Artigo 3** – Panerune pejnu waneyna wannananwaka ruhlepokyehixnawakna. Rawyana kihleru direito phujewakpotu rujhiyawakapluna pnute ruhlewaxyawakna hpahixanuteyna, hiyrunu hixannutshi.

**Artigo 4** – Penerune pejnu, hkamrure tshinanna wannananwaka ruhlepokyehixnawakna, waneylu hmunanhikowaka wale nanwaka kamhinawa pakatako walenanwaka hislahnawa rawyawaka rumukata hikchiklexyawakaplona htiyiritna wannananwakaya.

Xye tshinanu, wanna nanwaka ruhlepokyehixnawakna panchinikanurunepni waneklu rumukata yoptoletanruna pahixanunhejnu raluklerna, wanna rumukata kamhaletlina ho hijhaletlina pahixankaka. Wale munanhalu legislativa panerune pejnu himukata hislahlexikowaka, wanna nanwaka ruhlepokyehixinwana, riwekleyna ho ruhle hwalexyawakapna.

Koseklu yinu wajinixka wane htshinka kihle hiweke wixyawakapa, wane ruchpajya xye chinikantshi rumukata kihle hwale rixyawakapna yine htshijneyna há poyikowatatshinepni. Wale tshinanu, tshiji hislahlu hi rumukata pnuko hixa hchinikanuweyhitkota, halikaka wanerutu rixanna rumukata wanna nanwaka, yahomaklu satu yineru tsonu yoptohitanru. Hijhakilurni romkahixikowaka. Waleni ptowru yoptonwakatatshri paptokkaka ho papoktshikakaya.

Wane runya ruchinikanuwaxyawaka hanu rixa kihle hislahle rixyawakapa!

### **Kamhakilurkaka**

I- Hyinuwakko yanumsalu Koseklupirankaka.

II- Hkamhanru satu glossário Sato (yonawahlomta) tokantshi mimatjemkotu hitajikowakapa yijnakotatshinepa himatjemkajikowakapa papirankaka raluka tshinrexyawaka.

## **Kamhakarurkaka – Rimata himatjemikowakapa**

Rapatjekakanna papoktshikaka hajene hjemahchinikankajyawakapna ha ruhixyawakapluna hepomlukaka, wanepnute yanumsawaka runkaklexinixkaluna hihchinikanna.

- 1) Hanhe rixa kosekleta kosekatshri pipoktshiya? Hanhe rixa himukata hihlewleta piopktshi kosekatshri?
- 2) Klu tshinanhe panerune pejnu hijhalu wanna nanwka hihlepokyehixnawakwa hijhakaluru?
- 3) Klu tshinanhe hijhakalurni Kosekatshri pakamrurewatkalune rixyawakna?
- 4) Hanhe pixa himatjemletlu kosekatshri hixyawaka?

*Hepi rixinri – Tshiji Hislahlu hiynumsakaklu pirana.*

**Panerune Pejnu Tshijne kastakhapoxikolu hiyrunu *Unidades de Conservação*** yinuwajibolu hkamhikowakapa hmunanhalu hkamrurewaxikowakapa panerune pejnu tshijne mitshikawluru poktshikaka htshijnena pso potuko. Tshiji kastakhaplurutka hmunanhatkana rixa hiweklexyawakatkana panerune pejnu, rawyawakapna, hiyrunkoxa hi rumukata jihlokachatkota.

Panerune pejnu tshijne tshinanu, hkastakhapoxikowaka hitakkalurutkni hma yotnejikowakanupa Constituição Federal 1988 tshinre hiyrunu koxa Panerune Estatuto-te. Panerune pejnu tshijne kastakhapotkalurutka hislatshri waleni Fundação Nacional do Indio (FUNAI).

Panerune pejnu pirana kochtshekkoklunu, trsu potuklu chinikantshi romhahi wane hwalex yawakna, mitshikawa hohnekanunuko, hyahotkakna, hiyrunu romkahi yahotkakletawana, hike pnunnu hixwakanpatkana hmalixikowakanpatkana.

Unidades de conservação – ya o inciso I do art. 2º da Lei nº 9.985 de 2000, que institui o sistema Nacional de Unidade de Conservação hanu rixkotka hochá:

*“ Hwikowakkaka tshiji hiyrunu pahixankaka hwatshri, hiyrunkoxa honhakaka, rawachatmaka seyni ptowrukni kihleru, Poder Público himatyehrerutka, hijhakaluruyma ruslahikowakapa wane potuko rixyawakapa, Hihle hislahletkalurutka, waneya rixyawakpatka ruslahikowaka”.*

O inciso III do § 1º do Art. 225, da tsru Lei hihlererutka:

**Art. 225** – ptowru potuko hwiya hochá hajeru seyni hi hnikatko, hkamhako ruhle kamhalexikowakapa kihle hwale rixyawakapa, Poder Público hepixa hislahlexyawakanapwu xawakni potuko hwatshine hiyrunu hinamtatshinewa tshinanu.

Rawa pimrikaka Unidades de Conservação kamrure hixannukaka ptowru hepixluya, Hma yinuwanatnukanuklunuwa wane hwakanatshinetka waneko rawanutkana. Parque Estadual do Chandless pixka, wane rawakanatnakanana 12 hirtshine. Satu papirana tshinre xye tshiji yinuwakle hislahikowka hi hixo yine wane hwakanatawa, seyni wanna haluklu waneko rawyawakna repixa hislahlexyawakapluna tshiji. Xawakni kamrurtshi kamhaketkalurni ptowru wane hwatshri ruslahikowakapa, rujhaluna ruynumsajexikowakna wane poktshi hwatshine.

Pnute pya hichinikanuwlexyawaka, wethatanru Sônia Guajajara tokanu yehi, Tsro hixikatshrowa himatpiranyehitkaluro panerune pejnu piranyehi hislahatshro koxa Brasil-ya, hixa hchinikanu tshinyawaka pixka tshinatshro.

“13% ya panerune pejnu tshijneya wane potuko hixkalurutka, psokaklu 98% hwawa hochá, klu tshinanu wane rixa himaletkota patshijne hajene pahixanu hiwekle himatpiratatshineya, ruslahikowakapa. Wane wixkako pchini waneko wixa hiwekletanu wixannuya, Ktshijne wixinipa wkamhanru wumukata kamhaleru, wekhixinwa hanu hixatshinwu: panerunwu, pnunnu hixa hiwekletatshinwu, walixle kahwakpirruru, hi tshiji tshinanu tsonu, seyni waneyapwu wtshijne potuko. Wale hochá sato hinrotshi pixka hixa munanhaletkalurni wuslaha hiwekletjero. Wala yehikni rawa ptowruko. Tshiji hiklukle tshinanu wyahotkajini, klu tshinanu wimatlu wale tshiji ptowru yineru munanhalu hislahkaluru rixyawaka”

## **Wimatanru o artigo 231, parágrafo 1 da Constituição Brasileira de 1988.**

Yahotkaklu Tshiji kastaklu hapo tshinanu, ditadura militar mahle 1994-ni, waneklu papko wale hepixlu hwakanata na Costituição Federal de 1988 União towutanru hkastakhapoxikowakapa, ruslahyawakaplu hiyrunu hkahwakpiraxikowaka ptowru himwakaluru. Artigo 231 paragrafo 1, wantshina:

*"Tshijkaka panerune pejnu hwaleru rixannu kamrurna mitshikawakananuko rawakanaxyawakatkana, hkamhakanaxyawakatkaluna hniklerna hiyrunkoxa hkamrurewaxinrina, hi hkachrijetatkaluna ptowruko hochwa hwatshri hijhakaluru potu ruhlenuya hiyrunkoxa hi hyokmana rixannuyna, rasruha hixa kamhalexawakluna"*

*"Panerune pejnu xye papko Hakri tshijne hwatshine pnu pejnu hixa hiwekletatshinni hiyrunu koxa hi wanerutu rixa hikchikletluna hixo mhalpotuko. Panerune pejnu Hakri hwatshine, tsru yahotkakluyma, rekhixnawana katnihe wanna... Hakriya panerune pejnu hikchijnatkawa mitshikawni wutsrukatenni hwajekanatanru tshijne mitshikananhapka wanecha pokowjekanaxikatshinni..."*

*Joaquim Maná, 2006*

Hakriya, xye papko halikakpotu himathetkaluru rixyawakatka "kihle hwachlu papko potu rixyawakatka"rallixyawakatkaluna hixo panerune pejnu, hiyrunkoxa konruhaklerune, koxa hetatkalu wannako rawyawakna hixe mtowuxyawaka npatkana hma kamrurewachaxyawaka npatkana, phuru myoya.

Panerune pejnu Políticone yehi hwakanata hnikaxyawakpatkaluna" salewaktshi papko" ha rukchijikowakatka "kihle hwachlu papko potu rixyawakatka". Wale herotu papkolu rawa FUNAI yinuwayyawaklu 1976 hiyrunu hixo hepixlewtatshine hiphujewna panerune pejnu hepiretatshine.



Figura 20 - Delegação acreana em Brasília, na luta pela demarcação de TIs do Acre, 1980.

Tsru hixikatshriwa Luiz Nukini yanumsale, runkakletlu panerune pejnu Hakri hajene papopkolkaka rukchijyawakatkaluna ruhlewaxyawakatkana.

Hixo kata hyanna Panerune pejnu hepixlu rujhiyawakna. Mitshikananu rukchiklernina tshiji. Mitshikananu kosekatshinni yoptohrewatni tsru kojwawaktshi. Pakatatkani ruhltkakana rumukata hiynumsalexikowakapna panerune pejnu pirana. Xawaknipapapkokotkawu wuhle kamrurewaxyawakpatka, rumukata kpahixanute hixlexyawakpatkana. Xawakni waneywu pahchinikanurune wixyawaka rumukata pnute hixa hiweklexyawakapna panerunekaka poktshikaka.

Waleni mitshikananu Paptohirune hchinikanu kamhaleru kamhachalerutkana satu política-ya papoktshikaka hchinikanu psoltshijneko rawyawakna, pakatkaka wannananwaka hetamxnawa hkosejnowakwana, waneyna wannananwaka himukata kamhayehlexnatkawa riwekleyna.

**Kastakhapotkoklunutka rexnawana satu himyakklewatatshri panerune pejnu hiwekleya, Tsru hixikatshriwa Francisco Piyâko, hjemtokanuxikowaka wla htshina:**

Mitshikananu hetkalurni yine kahwajnawa hike mwikane rikahwajnawana, hike potuko rawyanatkana, hiyrunu koxa himatkaltshikaka hamtakkatka hi hkamhatkaluna. Wane rixa hiweklekanatanatkana, walepnimka hamtakkonatka. [...] Wale tshinanu rawatka tsru yokmanru, Hkastakhapotkoklunutka hpoyikowatatkana hirtshine, xawakni halikaka wixannuko wkamhanutnaka, hihchinikanna hwakanatatshriwa, [...]

## **Kamhakalurupa – Rimata himatjemikowakapa**

1 – Rekhitko mapa tshiji hislahikowakakatka kastaktshijixikowakatk  
Brasil -ya hiyrunu Hakri – ya jhamler potukni yoptohitka hma  
hkayikachaxikowakanupa;

2 – Hepomlukaka rumuhjekakanrupna hiyrunu koxa hihitkalurupa:

- 1) Kluneru tshinanhe kihleru tshiji pinerune tshinnu hiyrunu pipoktshi?
- 2) Klunerhe hyokmanyatka pinerune ho poktshikaka  
hkastakhapotkoclunutka tshiji?
- 3) Klu tshinahe Hijkakaluru pirana halukkaluru rixyawaka pinerune  
tshinanu hiyrunu poktshikaka?
- 4) Klunerhe kihle hiwekle pikahwajnawa?
- 5) Hanhe pixa hetletlu pixa satu hirtshi tsru poktshi rawinitka? Haklu?
- 6) Kluhe raluka ruhlewaxyawaka? Kluhe wkamhanu ruhlewaxyawaka?

## **MAPA TSHININRI PIRANA – TSHIJKAKA HIYRUNU IKOWAKKAKA HIMIYNUMSAKAJIKOWAKA RUSLAHIKOWAKAPA TSHIJKAKA**

*"... Pakatkakpejnu rixolewamtne yine seyni yine hwiwaka hitseruwna, wale  
tshinanu wumukata wane tshinreta poktshi hajeneyma hanu wumukata hixletlu  
wma nikaxyawakanuplu ptowru wtshijne hwatshrikaka wma nikaxyawakanuplu,  
kihle hiweklewixyawakapa"*

*AAFI Valdenir Domingos, 2012*

*Tshiji hislahikowakatk hiyrunu hwikowakkaka Panerune pejnu Tshijne yehi  
wimatjemyawakaplu waleni tshiji kastakhapotkalurutka. Wuchinikankoxlu  
pakatako tshiji kastakhapoxikowakatk hiptowruneko kamhalu hixako wumukata  
kamhalermaka. Wale tshinnu, panerunkaka hetanru hanu rixa satkaka hislahletanru  
htshijnekakna.*



Figura 21. Conversando sobre gestão territorial e ambiental na TI Alto Purus. Foto: Josi Pinheiro, 2018.

Tshiji pirana kochtshekkoklunu kihle piranalu htshinyawakapna: hi hanu hixachatkaluruktapni tshiji hislahkalurupa hiyrinkoa hi hanuruktakni tshiji. Poyi kpurataklerune tshinanu, hiyrunu tsru hitakatshine walerutu hitaklu hitakatshine, wale koxa hihleyehitnawa rawyawaka. Wale tshinanukni htserutka hwikowakkaka, wekhixyawakaplu wkamrure Pahchinkanurune wixa hislahlexyawakaplu wtshijne, wahmunate rixnnu yopkake rixyawakapa.

Lucas Manxineru, hinkakletlu rimatjemyawaklu klunerni tshiji hislahlu hiyrunkoxa hijhakaluru rixyawaka xye piranankaka.

*Hislahlu walení pimata yokanaxyawakaplu, puslahanru tshiji. Pimata kamrurawaxinri wtshijne. Ptowruneko hewi hwatshinetka hapatjewaka wannatkani suslahaklerune, hi rumtukatkaluna hochakaka, hi hnikatkatkaluna hochá hajerakaka. Xawakni hsanacha hixakanaxyawaka ruptshekamxyatka hahnunkakpotu. Yíne yokmana hchinikanutatka. Papoktshikaka pnumnu hixa hichinikanuwleta. Pakatamnu manxinerune himata hichinikanuwakananumta. Wale mwaknumka [Tshiji Pirana Hislahlu], pakatakma hi kihlenatkalu ho pnute rixanatka. 100% wma yotnekkanklunu seyini pakatako 50% yotnekkatka.*

*Satkoxni xye chinikantshi mapakaka kamhikolkaka hmasatkana manxinerune himatkalni. Xawakni ptowru manxineru yanumaxyawalu wtokanu. Rawawa hixo mpohijetkotuwa, seyni hixowalu wimatanru. Wujhalu wexyawakpatnaklu Chinikantshi piranyehi ruhlepokoxikowakapa”*

**Chinikantshi yehkaka Tshiji hislahlu piranyehi hiyrunu hwikowakkaka (PGTA)**

Panerune Pejnu Tshijneya, mitshikananu panerune pejnu hanu rixa kosekletatkana, wanna yehkni rawa pixkakaklu koseklu rixyawakluna poktshiya hiyrunu hanu rixa yotnekletanruna hocha hajerakaka, hirtshine hichinikanrexyawaka, AAFI, kasruklewaklerune, kpinrewaklerune, kahontshi, kosekatshri, suxone hislahatshro, suxone, tsrutsolejine hiyrunu maklujine. PGTA yinuwakatshine wantshina, kahchinikanu rixyawakna wannananwaka hihlepokoyehixnawa panerune.

Xye panerkaka hchinikanu hipalatatka hkamhikowakpatka da Política Nacional tsjiji pirahislahlu hiyrunu hwikowakkaka hiyrunu panerune tshijnekaka (PNGATI), panerunkaka rakanhiyatka xye chinikantshi. Hijhakalurni rimatyehixikowaka halukalurkaka repixikowakapa hwikowaka hislahikowaka hiyrunu wtshijne nyi panerune pejnu yinuwayyawakatkalu tshijneya hiyrunu rimathetluna hislahlu piranyehi satu pahixnu koseklupiranyehi wtshijneya.

Pnute wuynumsakakanu tshiji hislahlu piranyehi hiyrunu hwikowakkaka jitaklewaklerune yonreru piranyehi.

*“Tshiji hislahlu hiyrunu wwiywaka wane rixa hislahletko pahixanu wimwalerkaka wtshijne hwatshri. Hi hnikatachatkona nikkalune honha hwatshine: chima, supru, kchijojru. Hiyrunokoxa nikkalune hocha hwatshine, nikkalune.*

*Wuslahankoxlu honha hiyrunu pahixanu himata hijpahatshri hiyrunu mimata hijpahkatu. Hiyrunokoxa wuchinikanretanru hinamtatshri, wuslahanru hahmuna kihleru, hiyrunu hahmuna ksahiwaklerune, ksami pixkalune hisure kihleyalu hiyrunokoxa hixo kchana pinretshi. Hiyrunokoxa wuchinikanuwatanu hanu wixa puratletanna nikalune hocha haene hiyrunokoxa wiprane pantshihajeneko kpahixanute wixa tshijnexyawakapa.*

*Xawakni hixnanwaka hislahnatkawa poktshi ymakananuko, wma nikaxyawakanuplu ptowru wimwaleru. Hixa hinkaksatna ptowruneko wasruklene hirunu satkaka kosekatshine”.*

*CPI-Acre, 2007*

*Tshiji hislahlu pirana panerune pejnu tshijne, nimatjemyawaklu wma nikaxyawakanuplu nikalune (nikalu hiyrunu chima) hiyrunkoxa ptowru ptshekaka. Hixa sretlu, wuslahlu kaweneyma hma yanjikowakanupa hiyrunkoxa hma jihlokachaxikowakanupa wtshijne. Wimatjemanu hi kaweneyma wyahkanu, hehe wumukata seyni wusante sputa tsonu, seyni hi howuka. Hi koxa wumukata hichankaletlu nikalu hitu trsuwakaya, klu tshinanu himaletkalurni.*

*Wuslahankoxlu wwenne. Hinriklu waleni hixako wixanu, seyni pakatkaka wkamhanru; hi koxa wumtukpotanru wwenne, wane wumukata hikchiklexyalu yeyixlu hiyrunu chimni wuylata yeyixatshroni.*

*Wumukata yotneklexyawakaplu wtshijne hajeru wujhalu mitshikananhapka wuchininikanuwaxyawaka hanu wixa yotnekletanru: hahmuna kihleru, yeyixlu kihleyalu, ksamine surkaka kasahirunkaka.*

*Wuslahanru wutaklekaka, wpowratyehitanru hiyrunu wmunanhanru hinamtatshri tshinankaka wtshijne". CPI-Acre, 2007*

As **Unidades de Conservação** hijhakaluru potni ruslaha pirana yehixikowakatka hochwa chatatshri hiyrunu ruslahyehixikowakna retjexikowakapna ecossistêmicos, sendo o Sistema Nacional de Unidade de Cpservação (SNUC), a ferramenta da política nacional tshiji hislahikowaka rawachaxyawaka, rutakkatka hanhe rixa hislahkotanu tshiji myotnejikowakanu pmumnu hixa hislahluyma, Hiyahoni Federal hislahanunepwu, estadual ha municipal. Wale tshinanu, as UCs wale tshinanu rawawa hixo pnunnu tshinru hkosejikowakapa, wale tshinanu rumukata hektu kosekle hixletana hi waneyanapna pahixanu kihleru poktshi tshinanu.

Parque Estadual Chandless pixka, waneyna satu hkamrurna tshiji hislahikowaka piranyehi reneka hchinikanutjerna. Waleni satu pahixanu hichinikanretkaluru heneka hchinikanrewatatshri kamrurtshiykaka Unidades de Conservação himukata poyahkaklexyaplu hkamrurna wane potuko rixyawakapna. Wale hijhakalurni hinamtatshine hirtshine Parque tshijne hwatshine ruchinikanuweyehitanruna, klu tshinanu Yokanatatshri do estado hchinikanu wane hwatshineko hepixlewatanutka turismone jimotsaklerune rixyawakapna hiyrunu Parque himaletatshine rixyawakapna.

Xye pirana hijhakaluru hetkotnaka jepireru mkoje piranyehi, romkahita.

## ***Jepireru mkoje piranyehi – Hislahlu hchinikanyehi hiyrunu hislahlu hichinijikowakapa – Tshiji Hislahlu Piranyehkaka***

### **O mapeamento participativo ruhlepokoxikowakpatnaka panerune pejnu tshijne**

*"Etnomapeamento-yma rumukata hetkota ptowruko tshiji ha hochu hixnu kluneru hiknohlu, waneykoxwu hiyrunu wuchinikanretleru kamhakarkaapa wtshijneya hiyrunkoxa hmahle mhalkaka wkamrurawata poktshikaka hichinikanretleru etnomapeamento-ya hiyrunu wetlu hixu kyaprerkaka, satni wale, pahchinikanurune wumukata pnute haniklexyawakaplu ptowru pimri kamrurtshikaka hiyhakalurkaka rumukata wane hixa munanhalexikowakapa ptowru hochu wimwaleru".*

*Luiz Nukini, 2014*

#### **Satu hetlu panerune pejnu tshijne**

O etnomapeamento wale satu herotu papko kamhajejanatkaluru jitaklewaklerune rasrukakanaxikowaka papko, hkamhakoklunutka poktshi mayawle yehi. Tshiji Pirana Hethalu-mta yehi wkamhakanaxinixka hiyrunu panerune tshijne pirana yehkaka, wkamhalu hijhakaluru rixyawaka wuslahyawaklu, psojtkaka, wane tshijne hwatshine, hjihlokna hyotnejyawakapluna. Hmahle, xawakni psotsonu hyokmanyatka, klu tshinanu xye kata wutakatkalu hipiranyehi.

Wkamhagetlu wenu hiwakkaka hixako wtokanuya. Mitshikawni, ptowru wwenne hixako wtokanu wutaka hiwaktaplu, seyini payri tokanu wyoptoxininatka kyapreyehinwu wma yanumaxyawakanatka wtokanu, satu yapkaku pixka,( mamoadate ) hapha, seyini hixa wtokanu whiwakaxyalu chima mwajnutu, hma mimatkanna tshinanna hyokmakluna chima mwajnutu mamoadate rutakhiwakatluna. Hixa hitakatkalu wtokanu wyanumaxyawakpotpatkalu, wane wixleya wumukata kahwakpiratkota wtshijneya.

Etnomapeamento-ya, wumukata hetletlu wexyawaklu wtshijne, waneywu wepirene weneka mixkonutjene pahchinikanurune wixyawaka hiyrunkoxa

wkamhiyawakaplu pahixanu wimwaleru, wukchiklu herotu chinikantshi wumukata hixhohnepotuko wwiwakaplu hochu.

Waleni wihchinikanu wuslahyawakaplu, walekni hepixwu wimata kaniprexyawaka hiyrunu wexyawakaplu hipsohe wumukata kamhaletana. Hiyrunkoxa repixa hetletlu hallukalurlahe rutajikowaka pimrikaknitka mahatatshrinatka. Hislahlu henekahchinikanutatshri yehi kihlarni panerune pejnu poktshikakaya hjemahchinikankajyawakna hanu rixa hiwekletanna hochaya, mumtukkotu rixyawakapa, wanepnawaka hi wyokmakanru wixannu hiwekle”.

Moisés Piyãko, 2006



Mayawletshi 23. Pahixanu Chima mwajnutu tshijne pahixanu mayawlekaka kamhikolu, Mayawletshi: Billy Fequis, 2015

Tshiji mayawle kamhakoklunu repixa hichinikankakletwu rimatjemikowakapa tshiji pirana hethalu psojtkaka hihlepokotkalurutkani, retko kyaprerkaka seyni ruhlepokotanru. Mayawletshi yehkaka wumukata hetletlu wale piranyehi wiynumsakajyawakapa, rumukata nikatlexikowakapa kojwawaktshikaka poktshikakaya. Poktshikaka komhikolo pahixanu mayawlekaka kihler potukni hkamhikowakatka PGTA. Mayawletshine kamhikowakatka hiyrunkoxa hislahlu piranyehi kamhikowakatka, wuchinikanretleru politica-ya wixa hislahlexyawaka tshiji hexikowaka hiyrunu ruslahikowaka hwikowakkaka panerune pejnu tshijne, rumuynumsakakanna panerunkakluko, rimwastsitanune hiyrunu tsru hixikatshinwa.

**Pnute wimata pirana xyawakaplo ptowru kanipreyehixikowaka hitajikowaka xawakni wethatanru satu tsru hixikatshriwa tokanu:**

*"Pahixanu mayawleyehi hitajikowakkaka waleni satu hixantshi ptowruka yanumsawaka kochtshejikaluru piranyehi himrexikowakni, mitshikawni wkamhajekanatlu yonawahlo chpataya, hkamha mayawletka, wijiwuyako ho papewo, pakatako hiynumsakakluyako hkamha piranaxyaluna tshji, "hewni tshiji hislahikowaka, hewi waneywu wale". Hiyahoni wimatakanatkalu hkaniprexikowaka wihchinikanuyako wtshijne hixannukaka, seyni xawakni waneyatkawu hmayawle, wanepatkalu raptowru piranaxyawaka, wale hixnawa pahixanu wyostayehitjerutka wwiywaka, waleni satu yonawahlomta, tshiji mayawle piranyehi himrexikowaka katukta hethatanru, wale himatjemakananumtanru hislahlu pirana..."*

*Isaac Piyãko, 2015*

*Tshiji piarana hislahlu hiyrunu hwikowakkaka poktshi hajenkaka kamhalerni tshiji piranyehi kamhakanatkoklunu, rapatje kamhale hchinikanutna. Waleni satu yonatkalurutka poktshi hixa homhahlexyawakaplu hanu rixa yotnekkotanu hochha hajerakaka panerune pejnu tshijne hwatshri, wuchinikanuwatanu hma mahaxyawakanupa pahohne.*

*Poktshikaka rujhaluna ruynumsakajyawakna, hkamhanruna walerutu chinikantshi ruchinikanretlerna. Hi ptowruko tshiji hwatshri, reyinuwakle pixka hixanatka, yine himukata hislahle hohnekanatanru.*



*Hipirankaka hkochtshelerna hiyrunu ruhlepoklerna poktshiykaka hapatjeru hwakanatka pchini tkamhaka PGTAs wannani: hochā, yahkalu, chimahlu, hsana, hitaklukaka, hochā hajene puraxikowaka, pantshi hajeneko puraxikowaka, poktshi, pahixanu malukkotutka, hiyrunu powrawlukaka, honhakaka, ruslahikowaka psoluko tshiji tnumne”.*

*Benki Piyāko, 2006*

Hichinikanuwlu piranyehi papiranyehi himrexikolu rumukata hekhirexikowakapna tsru hitakkaluruneya (governmentais) panerune pejnu kojwakjeru tshijkakaya.

### **Hichinikanuwlu piranyehi tshinanu hi kyapreyehitkalu wiwejinri**

*Hixa tshinanu Hichinikanuwlu Piranyehi waleni satu kamrurewapi kihler potuko poktshi tshinanu, panerune pejnu tshijne tshinanu, hwatshine tshinanu, klu tshinanu wane rawa kamrurtshi kamhakalurupa, wale kihlerni ptowru panerune hiwekleya, ruhlexyawakapluna yahkalkaka, chimahlu, hochā, tshiji, wenu, rapha, malukotutka. Hichinikanuwlu piranyehi tshinanu hi kyapreyehitkalu wiwejinri, wala yonawahloha mwaknumka hanumka wixa hiwekletanatka? Wale chinikantshi kihlerni hixa wiwekyawaka. Hixa waneywu wuslahkajyawaka, wtshijne psoluko. Hichinikanuwlu piranyehi waneru satkaka kamrure hiyrunkoxa ptowruneko kamrure wuhle hiweklexyawakapa.*

*Hichinikanuwlu piranyehi rumukata hikamrurewaxikowakapa ptowruneko hijhalu ruslahikowaka, hirtshineya, kosekatshineya, hasruklewatatshine, kahontshine, suxone suslahaklerone, jitaklewaklerune, kpinrewaklerune, maklujine hethawaka hwatshine wale piranyehi hasrukamtkalunetka rasrukjerna hasrukamxyawakna. [...] Xawakni hasrukkalunetka hislahpotutakalu kasruklewaklerune hasrujyatkana ruslahpotuxikowakpatka tshiji. Kpinrewakleru wane koxa hinkaksalewakananumxya tsrune hiyrunu maklujine...*

*2004-ni wyinuwaka kamhalexinixkalo tshiji mayawle psojtkaka herotu hiweklu poktshiya, hixpotuklu peklo. Hixa hi wane hixatshri himwa. Xye poktshi hixo yineru potuko hwapa hiyrunkoxa wakane wpurata seyini wannakni wusanate jihlokjeya, hi koxa wumukata hitaklewletana hixastsi hwatshri ksate, howuka tsonu wumukata hitaklewletanatka waneyakni yine hetamtkalulu kyapre rixyawaka. Waneya hyinuwaka hipallemtkalulu poktshiya, satkaka hirtshine*

*hichpakamxinixka wetamtkalu wale tshinanu wuchinikanuwatka: hixkaklu hetkoko kojwakkakatka, klu tshinanu hewiko wpurawaxya, yine haluka hetkatlu rutaklena, ptowru hitakluru hsana hwatshrini jimeka, sapna rumtukatkana. Wale wetle tshinanu wuchinikanuwata wnikaxyawakanapna wakanepni wanepnutetka wetatkalu pnuko rixyawakatka. Pnuko wixa hetlexyawakatkalu poktshi xawakni ptowru wimwatka hitaklukaka. Xawakni wexyawaklu wane pothetkoko wixatka.*

Fernando Henrique Kaxinawa, 2018



24 Mayawletshi. Chinikantshi Piranyehi Tshiji Hishlahikowaka hiyrunu hwikowakkaka Chima Mwajnutu Tshijne piranyehi, Acervo CPI-Acre, 2016

## **Hijhakalur potu Chinikantshi hislahlu piranyehi kamhikowakapa ruslahikowakapa hocha hwatshrikaka**

*2004-ni wyinuwaka kamruretaku chinikantshi tshiji hislahlu piranyehi wtshijneya, wale chinikantshi hi hixa tsonu ruhletanu. Xye kamrurtshi pirankaka kamhakalurkaka tshiji hiyrunu hwikowakkaka piranyehi wujhakoxlu wunkaksaxyawakna wimwastsirene wtshijne tnumne hwatshine. Juruá wenne rawawa pahixanu kochpakachaxikowakawa, hepi poktshiri Peru sreta hwatshine, rusurokamtkoklunu waneru satu payrine poksthiru Foz do Breu. Wtshijne pirana tnumne, xixkoxa himukata hepixlewleta xye chinikantshi piranaya wipoktshiykaka himwastsitkalune rimatjemkakkona.*

*Tshiji Hislahlu pirana wkamhiywakatka wimwastsirene hetanru wkamrure hocha hwatshine wuslahyawakatka, satu yapkaku ksami, wuchinkanretaku hixo rixyawaka ksami hi wkayikanutaku waneko hixacha yehitatshri patkani, poktshi hajene hwapjereru patkani, hahmunkaka, yeyixlu kihleyalu, yahkalu. Wane hixatshri chinikantshi, wimwastsirene koxa himata hetanru. Wale himukata hepixa hichinkanuwkakletna hixastsi hwatshine ruchinkanrexyawakapluna hinamtatshri, Hixhohneknatku xye wkamhaleru hijhakaluru potu rixyawaka.*

*Wekhitanna hixastsi hwatshine wipoktshi wuslahyawaka, xye wumukata hichiikanuwlexya hinamtatshri tshinanu, waleni satu kamrurtshi hwikowaka mumtukatu, waleni satu kamrurtshi hwahohne kanatatshripa pnute hyanu, wepixyawakapna hike mwikanni pahixanu nikluru. Hiyrunkoxa peneka hchinkanutanna mitshikawni xixyawaka, hi tsru kamrurtshi kamhaklerune-yma wixinwa, xawakni pixka Brasil waneyna tsru hitaklucha kamha piratatshine, hi wkayikanunru hochapni ho pimrikaka mukchika hihlenutkotu wtshijne yehi hiyrunu winerune.*

Hocha hwatshrikaka pahixanu, wetaku hike yotnekaku klu tshinanu xawakni waneyatkawu wimata hexyawaku pixkakaku rixyawakatka, wimwatu hahmunkaka hiyrunu ksamikaka. Ksami sure wwajeta pantshi wkamhiywaka tshinanu, tshiretutshra hiyrunu hopa tshra. Wane pnute wkamhinitaku chinikantshi, wyinuwaka hislahletaku.

AAFI Altemir Matheus, 2018

Xye hepixlu hijhakaluru potni panerune pejnu nwaka rapojyawakatka Brasil hiyrunu wane rixa hapokletlu poder público rapatjexyawakapluna xye chinikantshi kamhakalurutka politicas publicas-ya. 2012 decreto yinu wajinixka 7.747, hixo yahotkaklu hiknohinixka, Lei kamhakatka da Política Nacional-yaTshiji Hislahlu hiyrunu Hwikowaka (PNGATI):

*Halukkaluru munanhikolu hitajikowaka hepixle, rixyawakpakotnaka hiyrunu wuslahyawakaplu ptowru pahixanu wtshijne hwatshri, ptowruko wimwaleru rixannu pakotnakni, wuhlewa hwachle xyawakpatnaka hinamtatshine panerune pejnu tshinanupa, wkwahwakpiratanru satkaka rixa hiweklexyawaka”.*

Satkaka hislahyawakaplu, chinikantshi hichinikanretkaluru chinikantshi yehi hkosejikowakapa rumukata wane potuko hixlexyawakapluna hkamrurna. Chinikantshi Hichinikanretkaluru waleni satu kamrurtshi hekhitatshri, wane potuko rixyawaka kihlewaka, hiyrunu rekhitko kihleru kamrurewawaka, wane ruchpajyatka satu hepomsalu munanhakaluru, hislahlu piranyehi pnawaka, munanhakaluru kamrurewapi hislahlu piranyehi UCs, Conselho de Gestores e o Perfil hirtshine hepixkalunetka.

Os Conselhos Gestores, waleni himatkaluru psojite, ptowru himukata yijnakletlu hislahkalurkaka piranyehi, halukaluru kakayma pnute hkamhikowakapa satu hislahlu pimrine koxa hinkajikowkapa. O Conselho waneyaplu wanna pixkaluneko ripekolna dos órgãos públicos federais, estaduais e municipais. Wanna himukatlu jetjerewaklene ho pakatako kamhaklerune.

O conselho consultivo (hi kpixkonruruhixyawakna), waleni fórum pixkakaklu hijhakaluru, hetjerewlukaka, yanumsalu, hipirlukaka hiyrunu hislahlewlu UC, rexikowakapa social tshinanu, wtiyirote, wixannu hwalex yawaklu hwikowakkaka pahchinikanuruya. UCs rimaxikowaka hanu hixatshrini rumukata kamhalexikowaka Conselho Consultivo wannani: Parques, Reserva Biológica, Estação Ecológica, Monumento Natural, Hapnanuwaka Hocha Nikalune Hajene Psoltshijneko.

O Conselho deliberativo (hihitatshine pixkonu) waleni wale psojite

kamhakaluru hijhakaluru potu, hihjekaklu, hipirkaklu, deliberação e gestão da UC referente às questões sociais, econômicas, hixannutshi hiyrunu hwikowakkaka. Os Conselhos chitshiklerune wanna kamhakna pimrine mwaknuklunu hipekotatshine rawyawakatka ruhlewaxyawaka (RDS) hiyrunu koxa waneko hwatshri kamhaklerune.

(ICMBIO, 2012)

Hirtshinkaka hepixikolutka – hasruklu tshinyawaka ICMBIO halujyawakatka de 27 de dezembro de 2013 no seu artigo 2º, waleni rekhixikowaka wale pixka rixyawaka rekhixyawaklu yine wannananwaka hwachatatshine de uma Unidade de Conservação, rimaxyehixikowakapna hirtshine hepixikalunetka, hiyrunkoxla, waneyalutu waleko hkamhalerutka, rasruhatkalu waleko rasruha kamhaleru ptowru hochá hajerakaka rawyawakna.

Wimata jemyawakpotuplu wikamrurewleru pirankaka unidade de conservação hislahlu xawakni wethatanru kosekatsri Resex Alto Tarauacá, João Brás tokanyonha yehi.



*"Mapa tshininro yonawahlo kamhakaluro tshiji piranyehi. 2008-ni tyinuwakkatka hislahlu halujikowaka piranyehi, 2008-ni tyinuwaka kamhaletka. Pimri mhalkakni rutukachakanata. Léia kosekatshro jihlojinixka, wala kochtsheka piranatanaklu. 2017-ni União hihitakalu, psol tshijneyako. 2016-ni ruchinikanuweyhitka 2º tshininri hirtshine mayawle, klunerni tkamhaleru, hanuru pixka rixa wale mitshikawluru. Wale tshinanu yine hekhitlu wale mayawle yine hihixyawakaplu hi satukna hirtshi RESEX hajeru wanepa. Wale himatlu hipsolu wale tshijne, ranjiltuna hkoachpajyawakaplona kopnu nhiha (runkakkona wale hislahatshine),: kluhe kihleylo mariri (kamalampi), kawene hiyahkalu... pimri kahwakpiriluru pirana ptowrunekwu kamha, pimrikaka hwa pirana kanatatshritka. Chimahlu tshinanu, hi tsaletachatko.... Hiyrunkoxa hi hanuruktako himtukachatatshri. Wkawkakatkalu hislahlu piranyehi hakanhiywakapa. Waleni tsru howukalu. Wyinuwaka himatletlu klunerni tsru wepixjeru, wukamrurewatanru. Wale hetlu satkaka hirtshi kamrure, rumukata kamrurewlexinripa. Wwiykoxa conselho, deliberativo 2010 kamhakaluru. Wale himukata hihretlu hislahlu hepomhalkaka. Leiani kosekatshro, walakni pahchinikanurune hixjejetwu walukler kaka.*

Kosekatshri chinikantshiyima pahchinikanerunni, wane mkoje yakako rixma. Kihle kosekle pixyawakapa, wujhalu paxkehi pnumnu hixa hchinikanutatshine hkamhikowakapa walerutu chinikantshi kamhiyawakapna. Kosekatshri tshinanu panerune pejnu rukchikamtluna kihleru chinikantshi rimata kosejyawakluna tshiji hislahlu piranyehi. Wale tshinanu, wumukata wane tshinreta hislahlu waleni satu político hixo yanumsalu pirana nwaka rumukata kihle hichpakle rixyawakapa.

### **Kamhakaluru kaka – Rimata himatjenikowakapa**

#### **Tshiji pirana hislahlu hiyrunu hwikowakkaka: yanumsalu hiyrunu chinikantshi kamhalu:**

- 1) Satu yanumsalu yinuwajibolu patshijne pejnu piranyehi hiyrunu koseklu piranyehi. Puslahanru hijhakalur potuko wtshijne hwatshri hiyrunu koxa koseklu pirana yehimta.
- 2) Hanhe rixa kamhakotatka chinikantshi koseklu hiyrunkoxa powratlu tshijkakaya?
- 3) Pyonhiwakatanru ptowru hochá hajeru yotnekkalurpotu yonawahlo mtaya ptshijne hwatshri (nikalune, kchna, hahmuna, wenu, há pimrikaka)
- 4) 4) Hanhe rixatkana wanna hochá hajene? Klu tshinanhe kihleru ruslahikowaka?

#### **Tshiji Pirana Hislahlu hiyrunu hwikowakkaka hiyrunu Powratlu chinikantshi:**

- 5) Hanhe rixatka Koseklu Chinikantshi/Powratlu Chinikantshi? Rujhalhe ruhle poxikowaka?
- 6) Hanurhe kojwaklewata Koseklu piranyehi hkamhakoklunutka?

### **Pso pirankaka kamhikolu**

7) Pkamha mayawletanru pipoktshi pekhitanru ptowru wane hwatshri.

8) Pipxakanru satu *post-it mapa*-ya khetjerewakleru haniklero, rimaxikowakapa hanu pwa pixa.

### **Pamyo piranyehi – Hepixlewattshine Mixkoxikolu – Paxkehrune, Pahchinikanurune hiyrunu Hepixkakatshine**

Paxkehrune hiyrunu Pahchinikanurune Panerune pejnukaka rakanhatkana yahotkajlu hkamhakanaxinna hijkakaruruya hiyrunu rimepe hapatjerexyawakatnakna panerune pejnu tshijnekakaya hixo Brasil tshijnekakaya, na década de 1980. Seyni rali pohitletkoklunutka herotu Constituição Federal, em 1988, wanekni pnute ruhlewaxyawaknayawakatka, hma yaprenyehi rixyawakatka paxkehruneya kamhiyawakapluna wannako ralujoyawakna.

Hakriya 1983, kosekatshinekaka kamhalu pamhalkaka tsru hapatjeru pamhalkaka Rio Branco-ya. Wale hapatjerkaka papirankaka kochtshetkalbumi kamhikowakapa yoptoyehrewatatshripa panerune pejnu politicat Hakri hajene hiyrunu sul do Amazonas. Em 1986, panerune pejnu yoptoyehitatshri Hakri hajeneya hiyrunu Sul da Amazonas mapa rixinri tsru hapatjeru hapatjeru panerune pejnuya hkamhalona sato União das Nações do Acre e Sul da Amazonas (UNI). Waleni satu kihleru hkamhalerna panerune pejnu. Waneklu papkotka, penerune pejnu rawyawakakna hwatshine waneyna satkaka Towuwatatshri stsi potuko yoptoyehlewatatshri. A UNI hijhayehjetlu FUNAI ha pimrine órgãos governamentais hkamha piranjexikowakpatka tshiji kastajikowakpatka panerune pejnu tshijne, hiyrunu kamrurtshi tiyiro heneklewatatshri, hethalu hiyrunu pinrewlu.

Ha konruhaklerune, hixo potna nordeste hiyakaxikatshine, 1970 hankajite mhale yinuwaka hapatjereitna, hjihlokyawakluna Poktshikaka Eclesiais de Base (CEBs) igreja católica hislahna. Rapojinixka Confederação Nacional Kamrurewaklerune Jitaklewaklerune Hakriya (CONTAG) wale mixkotatkana, halukanatkalurkaka ha runkaksatkana rimatjemkakkona kamrurewaklerune wannako raluklerna tshinanna, mitshikananuhapka tshiji hijhikolu. Waleni mitshikananu hijhikaluru tsru potuklu

konruhaklerune hapatjexyawaka hiyrunu rakoxyawakatkana. Mitshikananhapka rakanhatka Pastoral da Tshiji hiyrunu mitshikananu sindicatos yokanatanru CONTAG-ya em 1975.

Pixkakaklu rixyawakapluna hijhakilurni ruslahikowakapa hocha hma kaykachaxikowakapa, seyeni hi rumukatalewatanna hocha yoxjerucha hiyrunu himtuklewatatsri. Wanekni yinuwejika, hiyahoni, satu chinikantshi hepixlu hijhikowaka hiyrunu hepirtshine wneko hwatshine, Chico Mendes kosekjekanantru. Em 1985, pakatkakpejnu pnunnu hyakanaxyawakna, yinuwakkalurni o 1º Encontro Nacional de Seringueiros Brasilia poktshiya, wane hapkapatshine konruhaklerune pnunnu sreta hocha hichpajikatshine. Walekni hyinuwakle hkamhikowakatka Conselho Nacional de Seringueiro wannananwaka kamrurewehixikatshinwa (CNS). 1º hapatjeru hkamhiyatkalona sato "yonawahlo halixkalurotka" mitshikananu rimatyehixikowakatkana wannananwaka kamrurewehixikatshinwa rixyawakna.

### **Paxkehirune**



25 Mayawlwtsi. OPIHARP Hapatjere, TI Alto Purus – Foto Josy Pinheiro, 2018

UNI kamhakoklunutka hixo panerune pnunnu ranikakanatatka hiyrunu koxa waneklu hkamhatkaluna pahchinikanurune *política* yoptohitatshinetka. Em 1988, rakanha Pahchinikanurune rixyawakatkana *Envira* wenne hwatshine (*OPIRE*), xakoyakatnakni hkamhatnakluna Pahchinikanurune ptohi Tarauacá hiyrunu *Jordão* hajene (*OPITARJ*) hiyrunu Pahchinikanurune Ptohi Juruá wenne hajene (*OPIRJ*). Nyi satkaka Pahchinikanurune Ptohi, xye chinikantshi tshinanu, rukchikluna tiyiro hyinuwaka pahixankaka kamhalex yawakapna rekhikanatanruna.

Pnunnu Brasil-ya, hi panerune tsonu, seyni koxa mitshikawni hiwekle hixannu homkahitatshine poktshikaka, rapatjetatkana rumukata hekhirexyawakapluna wannako rujhalerna ho raluklerna ha rumukata hikchiklererna.

*Tsru kamrurtshi potuko wkamhatka hpoyahkajyawakaplu hixa himukatle. Hi myapretni. Mitshikanhapka Pahchinikanurune Ptohi hijhalu rikamrurerupna, wane hkamhiyatkaluna raluka kamhalekanatanruna, ruchinikanretluna hanhe rixa hapokletanna, hike mtowuxyawakanupwu, wujhalu tiyiro wukchijyawaka hixnanwaka kamhinitkawa, wjhalu pimrineyma wipeko hchinikankajyawaka pimrine himukatshineyma. Hixo tiyiro waneyakananwu hasruklewlu kaka tsonu tshinanu. Wwapyani hixo hepixlukaka. Hixa hi waluklu towutkalune wixapyawaka, hiyahoni wale tshinanu hixo hipeko hchinikankaklu wkamhajekanata, wumukata hikchiklexyaplu hixo kyaprerkaka”.*

*Francisco Pyiãko, 2015*

Hyinuwakkoklunu *Reserva Extrativista Alto Juruá*, mitshikananu Brasil kamhaleru, Hwa Xkehikanatatshinetka hyokmakkana Konruhaklerune xkehi rixyawakapna hiyrunu jitaklewaklerune *da Reserva Extrativista Juruá* Hawakate (*ASAREAJ*), walekatkani hiphujetatkana ptowru wane hwatshine.

Xawaknitka rawatka hixo xkehkaka *Reserva Extrativista, Resex Chico Mendes* pixka. Tsru tshiji hkachitkalu tshinanutka, Wane hwatshine hiphujetlu pamyo xkehkaka. 1994, hakanhatshine hapkani mapa, *município de Assis Brasil, Brasília* hiyrunu *Xapuri*, jepireru mkoje mhale hiknohinitka ruhlepokotkatka *da Reserva*. Wala hakanhatka Hakri tsru kojwawaktshi potuko rixakanaxini tshiji hicolukle konruhaklerune hiyrunu herotu “waneya hixikatshine” rapokatkana xye tshijne *militar* hchinikanuko hikatshinewa (1964- 1985) hiyrunu waneyna chinikantshi hyokmakyawakanapluna hochapni peklocha rixyawakpatka.



Satu xkehi hijhalu hmunanhikowaka hiyrunu koxa pixkakakane hiynumsakaklepni rixannu hapatjere pixka rixa hixonutanna. Rawa hapatjeru, wale psojite kosekatshri, Paxkehrune hapatjetatshine rapojyawakapluna klunerni hihchinikanna, Pahchinikanurune hetlu ho wane potuklahe rixluna ruchinikanretlerna.

Paxkehrakane himukata hitakhiwakleta yonatkaluromta hiyrunu rekhitanruna chinikantshikaka hyoptoxyawakapluna hepixlu, ho pakatako henekachalkaka, poktshikaka yinuwaka hepixlexikowakapa. Wale tshinanu hixo kyapreru hakanhatka rumukata hihlerexyawaka mkapluna hkamrurewaxyawakna rumukata hitakhiwaklexyawakna, hiyrunkoxa rujhanruna repirena rumukata kamhalechaxyawakluna pimrine xkehi hchinikanuya wane rixa himukata hixa hepixletkota.

### **Kamhakarurkaka – Wimata himata jempotuxyawakaplu**

Hepomhalkaka:

- 1) Pixkoxlahe wane xkehi hajeryi? Hanhe hixa hihlepokletlu?
- 2) Klu kamrurtshihe rawyana paxkehrune hajene? Kluhe hkamhana satkaka?
- 3) Klu tshinanhe hijhakalurni paxkehrune rixyawaka pineru ho poktshikaka?
- 4) Klu tshinanhe hijhakalurni hepirtshinkaka paxkehruneya?

### **Hikamrurewkakatshine:**

Wyanumaxiniklunru hijhakaluru panerune pejnu xkehi yanjejekeanaxini, hiyrunu koxa wunkakletlu trsu msalexikowaka pirana. Puphujetanru pixako pkamleru, pimatjeminwa pixnanwaka pihchinikanu pixannu hiwekle hanhe wane pixa hixletnawa, hkohetkowakhalu ho pnuko rixini, hetjerewatatshine xkehi *década de 90*, wmunanhanru herotu chinikantshi, wale tshinanupa repixikowakapna panerune pejnu poktshikaka hiyrunu payrine wannako rixannuna kamhapatshine.

Hakriya, hsalewnakanaxinrinapapkoya, hkamrurewjekakachatkannakonruhaklerunni, panerune pejnu nordeste hichpajikatshinni, pohirtshi hi hwenutjekanatanna, hi rumukata yahkaletanna, chimahaxyawakna hpohire tsonna rumukata hanjiretanna.

Hpohirna yokwijekanatanna hma mimata hapatjerewaxyawakanna hkamrure hohnerna patshijne hajene hchinikanu wale tshinanu hyokwije hohnekanatkanna.

*Walenni tsru pantshini. Phurni hichanrewje kanaxyawakni rejnunkate kwenpotu ruchanjiylu tsru poktshi yohnika wenru. Hi koxa tsru hwentaplu konru sahi wenru. Panerunni yokwijekanatkana konru hinnuya, hma mimata hethatkana hiyrunuhma mimatlana yonrena. Wane rixa mwenutle hohnekanatanna. Wale hma wenutlenna tshinanu hi rumukata wane hichpakleje kanaxyanna konruchaya. Salewnalu papko rixapini, hi rawachtapanna panerunni. Mmerene rikahwakapkanna hsalewna jekanatanna. Tsru salewnalu potuko rixakanatanna hate Funai hapokatka Hakri runkalewatna penerune pejnu himukata wannako htshijnena hkastajikotkana. Tsru yahotkakluyma hiyrunu pimrine hepixle, hiyrunu FUNAI kotka, Comissão pró- Índio HIYRUNU cimi, paneru pejnu hihlepokotatkalu pakamrurewatkalu rixyawakapna, rawyatkana hitshijnena phurumyo ruchpajyatkana”.*

*Edson Medeiros Ixã Kaxinawa e Isaias Sales Ibã Kaxinawa, 2000*

Pakamrurewatkalune, Edson, isaias, hiyrunu raptowru hihle wle yehi xyawakna salewnalu papko yehiya. hmixkoxnawana wannananwaka koxa himukata hikchikletlu panerune poktshikaka.xye pixkalutu pahchinikanune rixyawakna paxkehrunni papatjetanru pyoptoleru pihchinikanuya rixyawakako.

Satu xkehi pixka, pakamrurewatkalune waneyna romkahitanruna wannananwaka pixkakaklu hixyawaka, hiyrunu koxa tsru hapatjeruya. Htshina yonha yehixyawakatka, pakamrurewatkalune rixyawakna hpoyikotkakanna hyijnakotanruna kosekatsri tshinyawakna mchiretanune rixyawakna punkaksatkolunenapni pakamhakalune rixyawakapna, kyaprerkaka hiyrunu kapapko rixyawakna ruslahleya.

Xye pirankakamitshikawlunni, pakamrurewatkalunekamhatkalu ruhlepokoxyawakluna hkamhalerna hirtshine retwenrutluna wane pixkako rixa hichankalex yawakapluna. Wale tshinanu jitaklewaklerune rapatjetluna rutaklana, *químicos* hma mutatajyawanruna hiyrunu rixannu hitajikowakako, kihle potlu. Pakamrurewatkalune hijhalu kihle potuko rixyawakapa hitakletshi.



Xanipotuko, hetanu, rawa kyapreru panerune pejnu tshinsnu, pakamrurewatkalune himukata hepixletna, mturune nikjereru wane hajerukotka rixyawakpatka. Wala *prefeitura* yma pahchinikanurune pni, panerune pejnu jitaklewaklerune koxa kakojeru rutajyawakna kasahirkaka, Hasruklewawaka ruchanjiyluna mturune tshinanu. Xye tshinanu mturune kihler potuko hnikna, hi ranikluna malukkotu poktshikaka hiyrunu koxa hirtshine yopto wenrutlu rutaklena *prefeitura*-ya.

Wale tshinanu kihle piranyehlu, pahchinikanurune himukata kamhaletlu hipeko hchinikanru pimrine kahchinikanurune-yma hiyrunu wkamhiywakaplu hepirtshine hixannu wkamhiywakaplu pixkakaku kosekle rixyawakapluna kamrurtshi ruhixyawakatkaluna hiphujetkalurutka kamrurtshi.

### **Kamrurtshikaka - Rimatjemikowakapa**

#### **Hepomhalkaka:**

- 1) Klunerhe repixatka pakamrurewatkalutu hirtshine hipoktshiya?
- 2) Klunernihe kakojeru phuru tsru pantshiya hiyrunu pakamrurewatkalune hinerunna ho poktshikaka?
- 3) klunhe raluka tshinreta walenanwaka hiyrunu htowutjeru hchinikanu pipoktshiru pixaho?

#### **Kamrurtshi:**

- 4) Pkamha mayawletanru ho yonawahlomta putakhiwakatanru ptowru hitaklu hichanka mukatkaluru hanu rumukata hichanjikota.

**Kihleru ruchinijikowa ruhlepokoxinixka Pahchinikanurune, paxkehrune koxa wane hwiwakapa, hiyrunkoxa hijhakaluru satkaka wannako hkamruna wannani:**

- *Pt-Balanco Patrimonial assinado por contador e diretor estatutário responsável*
- *Demonstração do Superávit ou Déficit do Exercício*
- *Demonstração das Mutações do Patrimônio Líquido*
- *Demonstração do Fluxo de Caixa*
- *Notas Explicativas às Demonstrações Contábeis*
- *Relatório das Atividades do Exercício Anterior*
- *Plano de Ação para o Exercício em Curso*
- *Relatório do Conselho Fiscal (se a associação tiver esse Conselho)*
- *Relatório de Auditoria Externa (caso necessário)*

**- Estas devem também estarem atentas às obrigações fiscais, que são:**

- *RAIS – Relação Anual das Obrigações Sociais – obrigatório a todas as associações*
- *DCTF – Obrigação fiscal a todas as entidades sem fins lucrativos*
- *ECD – Escrituração Contábil Digital a todas as organizações que tiveram movimentação financeira acima de R\$ 1.200.000,00 no ano anterior*
- *DIRF – Obrigação que relaciona impostos retidos na fonte*
- *DME – Declaração que registra recebimento de dinheiro em espécie.*

Kihle himaxyawakkoxlu paxkehrune kakaya hike himaletlu wentatkaluruya, seyeni hijhakalurni pamhalkaka kamhikowaka rekhixyawakluna runkakleta piranaxikowaka, satu hiklukluni hwenruyma, hma kamhakonuklunu.

Romkahita, satu hekhitaluru hijhakalur potuko rixannu hixannu paxkehrune hiyrunu pakamruretkalune, repixa hichinikanuwle xyawakanupna hanu hixatshri pahchinikanurune halikakpotu hihletlu poktshikaka wane rixyawakapluna Pahchinikanurune rixyawakna.

Tabela 1 - Quadro demonstrativo sobre as principais características das associações e cooperativas

<b>QUADRO COMPARATIVO – ASSOCIAÇÃO X COOPERATIVA</b>		
<b>WANEPIXKALUTKAKA</b>	<b>PAXKEHIRUNE</b>	<b>HEPIXKAKLUCHA</b>
<b>1. Hali piranatkaluru</b>	Hkamhjetka panchinikanurune xkehi yine haptowrureya rapatjetatkana hma mapatjexyawakanupluna wanrixlena (art. 53, Lei nº 10.406/2002).	Yine hepiretkakatshine, wannako rixa hiweklexyawakna, hike hetna hmaayxakyawakna, hkamhaka rexikowakapa kamrurtshikaka wane hwa hiwakatatshine, pimrine pne potuko hixatshine (art. 4º, Lei nº 5.764/71).
<b>2. Halukalurkaka</b>	Hanu hixatshriktako kamrurtshi pkamhanu tsru kaylu minje pirayma, kihleruyma hixannutshi hiyrunu político wale xkehi hwatshine.	Hanu hixatshriktako kamrurtshi pkamhanu tsru kaylu minje piranayma hiyrunu hepixedatshine, rumukatamxikowaka hiyrunu htseruwnamxyawaka hkanhalerna.
<b>3. Legislação</b>	Constituição Federal (art. 5º, XVII a XXI, e art. 174, § 2º). Lei nº 10.406/2002, arts. 53 a 61, e Lei nº 6.015/1973, arts. 114 a 120.	Constituição Federal (art. 5º, XVII a XXI, e art. 174, § 2º). Lei nº 5.764/71.
<b>4. Yine mixone haptowruxyawaka</b>	Lei hi hinkakletlu hi pejnu yine himukata kamhaletlu Paxkehi rixyawakapna (associação) Lei hi hekhitlu yineru hixonu rumukata kamhalexikowaka panchinikanurune xkehi.	20 (20 yine) (satkaka), menene, walepotuko. Seyni pnuko htshina Código Civil. Art. 6º e subsequentes da Lei nº 5.764/1971.

**6. Hyonhayehkaka  
myapretkaka Constituição  
tshinanu**

Ruhixikolu halukatshineya.  
Ruhixikolu halukkalurkaka  
kamhakalunepa.  
Pakamkakolo tixyawakapa  
Estatuto Social.

Hyinuwajibowakapa tsru  
Hapatjeru de Constituição, eleição  
yma Kosekatshine tshinanupa.

Pyonpiranatanru Estatuto Social  
– ya, papewomta hijhakalurpotni  
walanwa Ata de Constituição (lei  
nº 9.042/95, heroto yonatkaluro  
do art. 121 da Lei nº 6.015/73).

Pyonpiranatanru ICNPJ Receita  
Federa-ya.

Hipiranyehkaka prefeitura – ya,  
INNS hiyrunu Ministerio do  
Trabalho.

Mitshikananu Kamrurtshi  
piranyehi kamhikowaka.

A sociedade cooperativa  
rapatjetna Ptowruneke Hapatjere  
kamhikowakapa yihapatshineya,  
Ata rutaka piranaxikowaka ou por  
instrumento público (art. 4, Lei nº  
5.764/1971) Constituição, eleição –  
yma Kosekatshinepa.

Wanepso potuko hitajikowakapa  
satakaka wane hwa hiwakatatshine.  
Tyokanaxikowaka yonawahlokaka  
texikowakapa junta Comercial.

Pyonpiranatanru CNPJ Receita  
Federal – ya.

Hyonhiwakaxyawaka Receita Estadual  
– ya.

Hyonhiwakaxyawaka INSS – ya.  
Alvará de Licença  
tkamrurewaxyawakapa prefeitura  
municipal – ya.

Registro OCEES -ya.

Há Pimri kamrurtshi piranyehkaka.  
Banco katpujikowa.

<p><b>7. Estatuto hijhikalurpotu</b></p>	<p>Associação hiwaka, hanu hkamhika ho hanu rutakhiwakaxika, kluhe rikamhaka/halukkalurpotu halikakalutu, rumukata kamhakotkakhe associadoneya, hipchini papkolupni, kosekatshine kamrure conselheironeyma</p>	<p>Entidade hiwaka, sede foro;</p> <p>hkamrurewaxyawakapa;</p> <p>hipejnu hohne hkamhako; hijhakalurpotu, econômico e técnicos. Hanu rixa rixko hjihlojyawakapna há ruchpakinipna associado-ne; Rasrujikolna, hkaniprexyawakna hiyrunu hsatkajikowakapa hyiyirotna;</p> <p>órgão de direção, satkaka hkamrure rimata hislahqnu, Tsrú hixikatshine ho kosekatshine hiyrunu conselheiro-ne yokmajikolu papko, Hpohixikowakapa tsru hapatjeru kamhikolu hohnepa;</p> <p>hanu rixa kanipretkotanu hixetatshri rateio himtuklewatatshri. Casos e formas de dissolução, processo de liquidação, modo e processo de alienação ou oneração de bens imóveis;</p> <p>hanu tixanu estatuto-ne, destino do patrimônio na dissolução ou liquidação.</p>
<p><b>8. Kihle Hekhiru</b></p>	<p>Rekhita, Estatuto Social tshinyawaka, ptowruneko associado-ne pakamrurewaxyawaka hiyrunu rexikowakapa kamrurtshi de interesse econômico, social, técnico, legal hiyrunu político. Federações hiyrunu confederações hekhireru.</p>	<p>Rekhita, Estatuto Social – lahe hitshitlu, os cooperados em ações coletivas e prestação de serviços comuns de interesse econômico, social, técnico, legal hiyrunu político. Rumukata kamhakota federações hiyrunu confederações hkachrihjenepa.</p>
<p><b>9. Kamrurtshi yehi</b></p>	<p>Halukalurkaka pso potuko.</p>	<p>Halukalurkaka pso potuko.</p>

<p><b>10. Mercantis Kamrurtshi</b></p>	<p>Rumukathe ho hi rumukata hichankakota</p>	<p>Kluktako hichanru</p>
<p><b>11. Operações Financeiras-pt</b></p>	<p>Rumukata kamhakota operações hiyrunu bancaria usuais, seyini hi rumukata kamhakota operações de empréstimos ho Yokanatatschri Federal hanjixikowaka. Hi hochá hajene hepíxikolní.</p>	<p>Rumukata kamhakota hanuruktako operação financeira. Ap- Realiza plena atividade comercial, operações financeiras e bancárias e pode candidatar-se a empréstimos e aquisições do Yokanatatschri federal. As hepíxkakatshine jitaklewaklerune rurais são beneficiadas pelo crédito rural de repasse</p>
<p><b>12. Socione munanhikolu.</b></p>	<p>Associadone hi wanna yoptohitlu pne rixpiraxinna associadone. Kosekatshine pje himukatlu optohretlu pnuko rixa hchinikanuxini associadone.</p>	<p>Cooperado-ne hi yoptohitlu nu hixa hchihikanutatshine hepíxkakatshine-ya, hma rutakanuto tiyiro tshinanu minje rixini. Kosekatshri seyo rumukata kamhaletanruni kihlenchinikanurune cooperadone-ya.</p>
<p><b>13. Kosekatshine wenuxikolu</b></p>	<p>Hi hkamrurna tshinanu hwenutkana. Hyoptotna satu hepíxlu tsonu jiji hkamrurna tshinanu.</p>	<p>Rumukata wenutletkana paksurkaka hitakjetkaluro tsru hapatjeru yehiya ptowruneko hihixini hsatkajika hsaletlero. Hi rawa satu wenuxikolna wanna tshinanu.</p>
<p><b>14. Wale nwaka/ Tixa kaniprexikowakatka tiyiro hichpakatshro</b></p>	<p>Himukata kamhaletkaluro ho hixetatshri paxkehruneya wala paxkehruneko rutakanrona. Wane hixatshri hike kanipretlo. Hanuruktako superávit financeiro tumukata kamhikota pahixanu hichinikanretkaluru</p>	<p>Rali heneklexinixkana tsru hapatjeru yehiya, hixetatshro kanipretka rixonu psokaka satkaka cooperado-ya. Rawa hepíxkaklu hixexikatshri tiyiroya. Hma wenutakanatanruna hapatjeruya hitakkaluropa ao Fundo de Reserva (mínimo de 10%) hiyrunu FATES – Fundo de Assistência Técnica, Educacional hirunu Social (mínimo de 5%). Ha pimri hixetatshri rumukata yokanatkota pimrikaka fundos de capitalização ho paxkehrune nwaka hipsokakakta waneyna Hepíxkakatshine yehi. Rawanruna ho IRPJ sobre operações de terceiros. Taxas wenuxikolkaka imposto-ne tkamrurewakanatka pchini.</p>

<p><b>15. Escrituração Contábil</b></p>	<p>Myapretu hiyrunu halukkaluru</p>	<p>A escrituração contábil wala kyaprepotu pahixanu hixonu tshinanu hiyrunkoxa rujhaka rawyawakapa contabilidades kanipretkaluru operações tshinanu com os cooperados. Hijhakalurpotni seyini kyaprerni. Rawanu ptowruko rutakyonhayehixikowaka satkaka cooperadone-ya hiyrunu hkanipre yonhayehitko as operações com não cooperados.</p>
<p><b>16. Hijhakalur potu Fiscais hiyrunu Tributárias</b></p>	<p>Pamhalkaka pkamhanru pohijeta piraranaxyawakaplu hmujhikowakanupa pma wenuxyawakanuplu. Hi hamhatsrini, hiyrunkoxa hi pimrikaka pwenutano.</p>	<p>Hi hwenutka hipokanano pkaylero pkamhaleru hepixluya. Hiyahoni kluneruktani wale hapka pujhanu hipokanano pkaylero ruchpajyawaka hipokanano pkaylero. Ptowruko pwenuta.</p>
<p><b>17. Retjexikowaka</b></p>	<p>Pumukata hetjeretlu prefeitura-ya (Alvará, ISS, IPTU), Fazenda Estadual (nas operações de comercio, INSS, Ministerio de Trabalho hiyrunu IR.</p>	<p>Paxkehrune pixka. Rumukata, waneya pixini pkamrure hiyrunu putakle, hsalewna hetjeretna tsrukakalune hiyrunu corpo de Bombeiro, Conselhos, Ibama, Misterio de Saúde etc.</p>
<p><b>18. Rixannu Rekhixikolu</b></p>	<p>Rekhixikowakna hpaxkehine pakamrurewatkalune rixyawakna. Rekhixawana Federações hiyrunu Confederações, Rumukata hihlepokkota órgãos rekhixjeru hiyrunu hyostayehitjeru, hma wakanuklunu hisatukna rixannu wale ptowru tshijiyako.</p>	<p>Rumukata hekhiretlu hpaxkehine pakamruretkalune rixyawakna. Rekhixawana Federações hiyrunu Confederações rekhitjenepna. Wale hekhiyehitlu pelo sistema OCB – Pahchinikanurune das Cooperativas Brasileiras, Brasilia hwapjitatshri. Pimrikaka koxa rawya hanu rumukata hixa hikchikletkota hepixlewlu federação hanikajiteya (cooperativas de 2º grau) e confederações (cooperativas de 3º grau).</p>

<p><b>19. Hnikatko hiyrunu hwenutko</b></p>	<p>Tsru Hapatjewaka htshinikowakatka ho wale hanikajnu rumukata nikaxikota, Ministério Público yinuwakleru. Halikakalutu kamha piratkaluru hnikaxikowakapa paxkehruneya raluka kamhakota nos Arts. 49, 50, 51, hiyrunu 61 da Lei nº 10.406/2002.</p>	<p>Rumukata nikaxikowakapa Tsru hapatjewakaya tsonu. Rumukata hakanhaleta hwenuxikowaka hate htshinikowaka. Wale tshinanu Juiz hitaka hiwakatlu satu ptowru wenru wenuatshripa. Hi rumukata hma wenuxikowakanu. Art.63,664, 65 hiyrunu 66 da Lei nº 5.764/1971.</p>
<p><b>20. Wanrixle/hijhakaluru</b></p>	<p>Halukkalurni taxa hwenuxikowaka paxkehruneya, henekachluru, fundos hiyrunu hitukatshri. Hi kyinuwakleru. Xye mwaknuklunu krapreru rukchijikowaka hepixlewatatshineya. Ptowru xkehkaka hi himukata kaniprekaklexyalo tiyiro hikchikkaluro ho hstkajyawaklona wannakakluko paxkehrune, wane hixkokluntshi hikeklu hohne hnikawinna pnute hyinna halikaka. Hejnu hixetatshri hnikatkoklunu ho hwenutkoklunotka rumukata satu Tsru hapatjeryehi hexikota ptowru hchinikanuya hana tyokanatko wala ho tuchpajyawakaka.</p>	<p>Waneylu hijhakaluru rixyawaka, hma yaprewamxyawaka, tiyiro hikchijikowaka pimrineyma hepixlewatatshine. Hijhakalurni poyahkatshri henekachaluro himukata yoptoletka henekachalurkaka, empréstimos tsru tiyiro hikchiklu nwaka. Wanhixlukaka hixetatsri, ruchyaxinixkalu hma mumukata wenulekanatanutu kamrurewakleruya, hiyrunkoxa heneklewjetatshineyma.</p>

Fonte: Sebrae, 2014.

## **PAXKEHI KAMHA PIRATKOKLUNU**

### **Mitshikananu hapkalutu**

Hethapkatanru hmahaxinri hiyrunu halukleru (kluhe wkamruta ho waluka kamhaletanru?) Wale himukatanru paxkehrune pahchinikanu rixinna rumukata hikchiklexyapluna raluklerna.

### **Jihlepokoklero**

Rumukata hwalex yawakapa paxkehrune, rujhaluna mutshikanan hapka paptohijjirune yine hapka yoptohitanru, rexyawakapluna hijhakalurkaka.

### **Hkamikolupa, yanumsalhapka hiyrunu tuhi pirana yehixikowakpatka**

Estatuto walani sato yonawahlo wimaxyehixyaplu hijhakalurkaka hiyrunu hanu rumukata kamhaletna paxkehrune hwatshine, hetanu: hiwaka, topji, hate hiklu, halukalurkaka, kosekatshine, himukatlu, ha tuslahikowakapa; Paxkehrune pji (tsru hapatjeru, kosekstshine, jislahlewaklerune, tiyiro jitakyahokleru yonawahlokaka, pahixanu hihlepoklu, ptowruka kihleru pirana hwiywaka) hetahchinikankaklu hanu rixa kamrurewletanu.

A comissão jihlepoklewaklero himukata kamhaletlo satu hchinikanu rumukata yanumyehlexikowakna hiyrunu ruhixikolna pimrine.

### **Kosekatshine hiyrunu jislahlewaklerune**

Kosekatshine hiyrunu jislahlewaklerno wannakni paxkehrune hislahatshine, hiyrunu wannakni chimpotukawa hijhakalune. Xyeni kosekatshri hepirene, Kosekatshri hepire, Kyonawakleru hiyrunu tiyiro jislahakleru; wale tshinanukni yanumsaluklu papko/ tuhixikowakapa yonawahlo, halukatshine hijhanru xye kamrurtshikaka, retatkaluna raluklerna, hkamhahapakxikowakapa.

Paxkehrune kosekatshri rumukata homkahi hislahkota satu jislahlewakleruya, wannani 3 (mapa) halikakalune potu ha hepi ripekolna, ptowruneko paxkehrune hwatshine htshinikowakna hixanu, rutakkanatsru hapatjeru kamhakoklunu ha rutakkana hipejnu mhale wale kamrurtshi wale hkamhanna yonawahlo estatuto tshinyawaka.

## **Paxkehrune Yonpiranamtanru**

Cartorio nwaka hyanu rutaka hiwaka xikowakapa hijhakaluru ho kpohiru rixyawakapa yonawahlo mtakaka tepirexikolo:

- Yonawahlo wane potuko hixatsro Paxkehine Kosekatshriya – Mitshikananuruto;
- Estatuto – mapa tshininro hitaka hiwatkaluropa ptowruneko wale xkehi hwatshine hiyrunu hmahle Hhiwakna susawjechatkaluru timaxikowakapa, tsru hixikatshriya, tsru hapatjeru kosekatshri, tsru hapatjeru yonawalewaxikatshri;
- Wane hwakanatatsshine yonaxikolu yimikolu (yonawahlo ho yinuwaka kamhaletatshine hiwakkaka, phujetanu hiwakha rixikowakapa ata hwatshripa;
- Ptowroka pdocumentote autenticada (RG) Cadastro de Pessoas Física (CPF) hiyrunu sato yonawahlo hinkaklewatatshro hanu hajerni Paxkehrune Kosekatshri;
- Ruhlepoko xikowakatka ata tyehi – mapa tshininro hitaka hiwatkaluropa paxkehineya ha hmahle hiwatshi susawjechluru himatyehitkalurutka. Ata tsru hapatjeruya yonatkaluropa ptowru piranyehi hyinuwakkoklunutka hapatjeru xkehi. Kyonawahlewakleru hitaka hiwakleropni hiyrunu tsru hapatjeru kosekatshri paxkehrune hwatshine koxa. Hiyrunu koxa paxkehrune hwatshine rekhitanrona CPF hiyrunu RG Ata rawyawakapa wale ptowruka. Kosekatshri nuretkaluru wale koxa hitakhiwakaxinwa Ata.

Paxkehrune hitaka hiwakanatanru no Cadastro Nacional de Pessoas Jurídicas (CNPJ) da Receita Federal, no endereço eletrônico: [www.receita.fazenda.gov.br](http://www.receita.fazenda.gov.br)

Estadual rutakhiwakaxikolu hi rujhalu mitshikananu papko, hejnu tsonu hwini pnu ranijikowaka; halikaka rumukata hita hiwatkakota no site da Secretaria de Estado da Fazenda (SEFAZ).

Patsrujire rixinri yonawahlo – Hishlahlewluy hiyrunu políticas públicas.

Halikakalutu salewnalu panerune pejnuya hiyrunu poktshikaka wannako rixannuna kamhatshine wanna koxa pnute ya kamrureta Estado-ya. Hpohiwaxinixka estradakaka kamhikowakatka tsru kamrurtshi kamhaklerune hixo potuko Yokanatatsshri sreta ha Yokanatatsshri Federal, hepixna hma mkahwaka piraxikowakapa wannako riweklenu hxannu kamhatshine tshijnene. Hi hkamhachatka, hiyahoni, panerune pejnu ptohi yinuwaka kaylexinixka psoltshijiko rexika ruchinikanretlerna, rujhako Yokanatatsshine sreta, halukkalurkaka hihixikowakapa hislahlewluy paneru minje.

*Pnute rixolewna kanumxyawakna, pnute htseruwnamtanu halukkalurkaka ruhlepoko xnawakwa. Wwiywakni wtshijne. Hi wumata hiynumsa kakachatanru Yokanatatsfri seyni halikaka wtshijne potuko rapokanu pahixanu wujhaleru. Pakatako hi wimata kamhalu wane hixkaktshi. Wekhitanru hijhakaluru rixyawaka wtshijne. Wumtujininwa hixa wkamnitjene pnute hixanxinipa.*

*Mitshikananu hekhitaluru estado psojiteya hijhakaluru potkaka. Hepi tshininrini walenwa hixnanwaka hexinwa. Wapatjetanu wekhixyawakaplu hijhakaluru rixyawaka wtshijne. Wuynumsakakanu wumukata hapoklexyawakaplu halukkalurkaka patshijne hajeneyma. Hixkakluko halikakpotu wtshina tokanutanu poktshikaka hwatshinwu. Mapa tshininri kata rimatkaxikowakpotupa. Wujhapotutlu wale swaji pnute, wuchinikanretanru kamrurewapi tskeroji wale swaji wallixyawakapa. Wkamhanru wipoktshi ypotuko hi halixatshritka wutaka hiwakyehitanu. Psol-tshijne piranpakni. 80% hocha panerune pejnu hwiywaka hislahikowakni. Tshiji mwaknu kikewu; Panchinikanurune wixinwa psoluyako, Wale tshinanu wale swaji tsernu kihlarni.*

*Dione Nascimento, representante do CNS, 2019*

Psoluko, tiyiro hojhakaluro Yokanatatsfri myoya hi tpoyahota panerune pejnu hiyruu rixannukna hiwekle himwatshine poktshikaka tshinanu hiyrunu poktshikaka hiukata hijhaletlo tsro tiyiro potuko hislahlewlu tshinanu. Hiyrunu koxa hwa pirana jekanatatsfri hi rawatka wanemkatkalo tiyiro hepixlewaxikatshro tshikluro pchini papkojijiya. Wale tshinanu, hijhakalurni rawyawakapa satu wale pixkalutuko hijhajatatsshine rawyawakapa política hitokote wale swaji hislahikowakapa.

Suslahlewakleru, waleni satu phujetanuru hislahlewlu, wale munanhinawa hixoluneya Yokanatatsfri-myó renejikowakapa wale swaji, ha ruslahikowakna, phujetanuru hkamrurna, rexyawakluna hiyrunu retjejexikowaka. Wale kamlu tshinanu rujhaluna ruynumsakajyawakna Yokanatatsfri-ya políticas públicas rimaxyehixikowakapa hiyrunu koxa Yokanatatsfri maklutene hislahyawakaplu.

Conselho Distrital Panerune Pomtanu hetatshine (CONDISI), Waleni satu hetkaluru ruslahikowaka ruslahikowaka panerune pomtanu ptowruneko wane kamrurewaxya panerune ho payrine.



Rawya satu chinikantshi ruhixikowakapa Plano Distrital de panerune pomtanu hislahlu, romkahitko, ruchinikanuweyhitko, retko, retjejetko, retapko hiyrunu ruhixikowaka kamrurtshi kamhajetkaluruya panerune pomtanu hislahikowaka panerune tshijneya Distrito Sanitário Panerune (DESEI), Pomtawlu kamrurewaxikolu por instituições públicas, Yokanatatshri minjenune, pimrineyma pahchinikanurune hixkakatshine ruhlepoko xyawakapluna (tshinkaktshi CONDISI 2012

*Xawakni pnuko rixatka. Hixa wukchikatkalu walerutu nruha wyanumaxyawakatka, wtuplata hiyrunu wuchinikanuwata satkaka hepixlewatatshineyma, Yokanatatshri sretate, wkamhiyawakaplu hixako walujyawaka winerune tshinanu. Nuru walekaka kamhajekanata ha xawakni hita homkahitanru wale chinikantshu kamruru tshiji yahotkakyehixikowaka, políticas públicas hetyehitamwu kihleru hohnekaka hiyrunu kihle hwale rixikowakapa pimrine hinamtatshinewa tshinanu. Kihle potuklu htshina hichinikanuweyhixikowaka kosekatshineya.*

*Luis Nukini, 2020*

*Yokanatatshri hchinikankaka hepixlewlw piranaya hkamhaluna muynumsatkoneko yaminawane hiyrunu manxinerune. Hi wkhawakakanat pchinna rapokna wtshijne. Hi wepomhaka, hi Yokanatatshri ymako wuynumsatka, hi prefeito ymako, hi Yokanatatshri ymako, hi secretário ymako, hi assessores ymako, hi presidente ymako, hiyrunu hi ministro ymako, hi vereadores ymako, hi deputado ymako ho senadores.*

*Hijhakilurni rimaxikowaka jemahchinikankaklu wannakni halikakalutu pirana wixyawakapa. Hi Yokanatatshri hitakanru hanu rixa hikamrurewle xyawakapwu. Hixni, yaminawanwuhiyrunumanxinerune. Rimatyehixikowakapahisatuhapatjeru tsonni. Hi satu yijnaklu hetkaluru tsonni. Satu haluka himatletkaluruwaleni satu yanumsalu homkahixikolu, rujha papkonuklunu, ptowruneko hetanuya”.*

*Raptowru yanumlexyawakna jemahchinikankaklu raluka himatletlerna yaminawane hiyrunu manxinerune, 2019.*

Haluka himatyehletkaluru rujhikolupa waleni satu hijhakiluru Estado brasileiroya hepomhale, pixkakaklu hiyrunu kahwakpirruyma, panerune pejnuraluka hixkaklexyawakluna hkosekyapluna hiyrunu legislativas rumukata riweklena yimleta hiyrunu rumukaxyawakna.

Wnikaxyawakaplu, hijhakalurni wla ntshinikowaka, hmixkoxikowaka hislahluya panerune hiyrunu poktshikaka, repixjeneyna hiyrunu wannananwaka hkamhalna política mitshikawluko, rawkoxna pimrine himukata yapjetletkalune hepirtshineyma kihle hwachlu hichinikanretatshine hochá hwatshineya. Wale tshinanu, kihleru wyanwakaxyawaklu hislahlewatatshine estadual hpoyahkakyapluna legislação hiyrunu hkamhanruna kihleru rixyawakapa direito hikchikkalurutka.

## Kamhakaluru

### Hepomhalkaka:

- 1) Hanu hixatshri kamrurtshi rujha Yokanatatshti rumukata hihlewlexyawakapa pipoktshiri?
- 2) Pixlahe satu conselho pmunicipiote hwa? Hanhe rixa kamrreta?
- 3) Klu tshinane hijhakalurni panerune pejnu koxa jijnakoxyawaka há poktshikaka mitshikawni hiweklu homkahitatshineya hkamhikowaka políticas públicas piranyehi?
- 4) Pixlahe jijnakotatkalu Yokanatatshti yanumsale? Hanhe rixa wale chinikantshi?
- 5) Kluhe wumukata hixleta panerune pejnu hma jijnakoxinrina hkamhakoklunu políticas públicas piranyehi?



## KAMRURTSHIKAKA KAMHAJEMTKALURUPA

Hmahaxinpatka hapatjeru ruhlepokotko satu kamrurtshi piranyehi hiyrunu yapkaluro, pa ptohi himatatshine hiyrunu sato yonawahlomta rutajikowaka pahohnekaka kamkakarurupa rumuka hihlewlexyawakapa poktshi hislahlu. Ho kosekatshri, hapatjeru hislahatshri, runkakanna jijnakotatshine ranijyawakapluna kamhakaluru pirana wtshijnekaka poktshikkakoxa wane yochmajikowakapa wale yanumsalu. Chinikantshini wale pirankaka tseruxikowakapa hwikowakaya.

Kamrurtshi yehi hanika piranaxikolu hijkakaluru potni walekni hepixanru satu tshanixikowakapa poktshi hayinete ruhixyawakaplu hijhakaluru. Waneklu papko rawa satu hijhakaluru hmixkoxikowakapa político-ne swaji wyanumaxyawakapa hixkoxa hiyrunu poktshi himutukanru wannako hihrerutka hkamhalerutkana hislahlu hichinikawlu yehi há pimrikaka yonawahlo.

### **Poktshi hislahikowaka:**

- Hapatjewakahwakanatatshinerapatjetannapoktshiysxyekamrurtshiyinuwakatshineyma (AAFI, Kpinrewaklerune, Powrawlu suslahaklerune, kasruklewaklerune há pimrikaka.);
- Xye kamrurtshi yinuwakatshinetka hapatjetanu poktshiyma ruynumsakajyawakapna htshinrerutkana hapatjewakaya hiyrunu mitshikananu hapatjere poktshiya pahohnekakalutupa.
- Poktshikaka mitshikawni hiwekle homkahitatshinewa romkahi hiynumsakakletanna kosekatshineyma ruchinikanrexyawakapluna hinamtatshripa pakatkaka tsruru;
- Panerune pejnu himukata pnute himatjemletlu chinikantshi kosejikolu piranyehi hpoyahkajikolupa htshinikowaka;
- Hislahatshie hanikanro yonatkaluro wane hwakanatatshineya Política hiyrunu hislahlewlú hiknohatsrikaka Conselho-ne tshinanu.

### **Hepomlukaka:**

- Hanhe rixatka poktshikaka hepikle hislahluya?
- Hanhe xawaka rumuka hixleta poktshikaka rumukata hihlewlexyawaka hislahluya?
- Poktshikaklahe poyahkakatkalu htshinikowakatka hichinikanretkaluru?

### **Hepixlewatatshine hislahluya potshiykaka:**

- Ptowneko hapatjetko paxkehkaka ho hepixkakjetatshine runkaklexikowakapa hapatjeru pirana;
- Petumhanru hanhe rixatka xawaknirutu Pahchinikanurune ptohi hwatsine.

### **Hepomhalkaka:**

- Hanu rixa hakanhaletatka paxkehite ho pahikamrurewatkalune?
- Hanurni kyapreru hkamhinri klu papkolu?
- Hanurni kyapreru xawakni?
- Hanhe rixa hixannutatka xawakni poktshi hepixlewlekaka?
- Kluhe himukata kamhakota ruhlewaxyawakapa?
- Hanunhe xawakni tiyiro himukata hikchiklexikowaka? Rumukata tserutkothe?
- Katnihe hepirene? Poktshi hislahluhe hepixlu?

### **REXIKOWAKA HO RETUMHIKOWAKA**

Hixolu hatnuhapo yapikowaka hocha hwatshine tshinanu, rujhiywakluna hpahixanutna hiyrunu kihle hiwekle rixyawakapna htshijneyna. hislahlu hiyrunu kosekatsri xye tshijnekakaya pahchinikanurune himatlu hiyrunu poktshi mixkonu.

Panerkaka, poktshi, hetlu satkaka htshijne hiyrunu hocha rimwalerna, seyeni hixo kyapreru retna hyokmananumtinri hixhohne potuko ktshijneruneko khamlewaka hitajyawaklu, nikkalurkaka ha hixako hiweklekaka. Kihlarni poktshiko hihlepokoxyawaklu poktshi hakanhikatshri, yanumsaluya ruhleopkoxikowakapa.

Panerune pejnu tshinanu, Chinikantshi hislahlewlu Tshijkaka hiyrunu Hwikowaka kamhakatkana poktshikaka hetanuya hiyrunu wane rixa hihretkatka wixannu hixannu, política hiyrunu hwikowaka pa tshijnekaka. O PGTA waleni poktshi kamrurewapre

Poktshikaka mitshikawni hiwekle homkahitatshine, hijhakalurni tshiji hislahlu pirana hjemyawakna hiyrunkoxa Conselho-ne hihixyawakkaklu. Kosekatshinkaka hetanru yanumsalu hyijnakoxikolupa unidades kamrure, rekhitanruna repixikowakna hmixkoxikowakapa políticas públicas (hasruklewlu hiyrunu Pinrewlu) ruhlewaxyawakapa poktshikaka.

Os PGTAs hiyrunu powratlu hichinikanuxikolu piranyehi rujhalu hmixkoxikowaka tshiji hislahlu piranyehi hikamrurewaxikolu hijhakaluru wannananwaka hetyawakaplu klunerni kihler potu ruhlewaxwawakapna htshijnena hwatshine.

Rexikowaka ho retumhikowaka rumukata kamhaletka tshinjetkaluru pirankaka, hanu rixa kamhakota, rixannu potuko rixikowakapa rawyawakna.

## **Repixikowakapa yanumsalu hiyrunu retumhikowakapa hyonatka pimri hepomhalkaka heneka hchinikanrewatatsro:**

- Kluhe pkahwaka hijhikaluru rixyawaka ruhlewaxyawakapa hislahlewu?
- Hanhe rumukata hixa yijnakletapna wane hwatshineko?
- Hanhe rukata hixa yijnakletna wannananwaka hihixyawaklu?
- Hanhe wumukata hapokletlu políticas públicas (ruhlewaxyawakapa Hasruklewlu hiyrunu Pinrewlu hijhikaluru?)

Hanhe rumukata yoptokota hepixlewlu ruchanjikowakapa wane hwatshine hitaklekaka?

- Hasruklewlu whentshine tshinanu (hasruklewawaka hihle hasrujikowaka);
- Hitaklukaka hichanjikowaka (poroto, sapna, pimrikaka,) halikakpotu hanjitatshripa;
- Ruhle hislahlexikowakapna kpinrewakleruneya poktshiya.

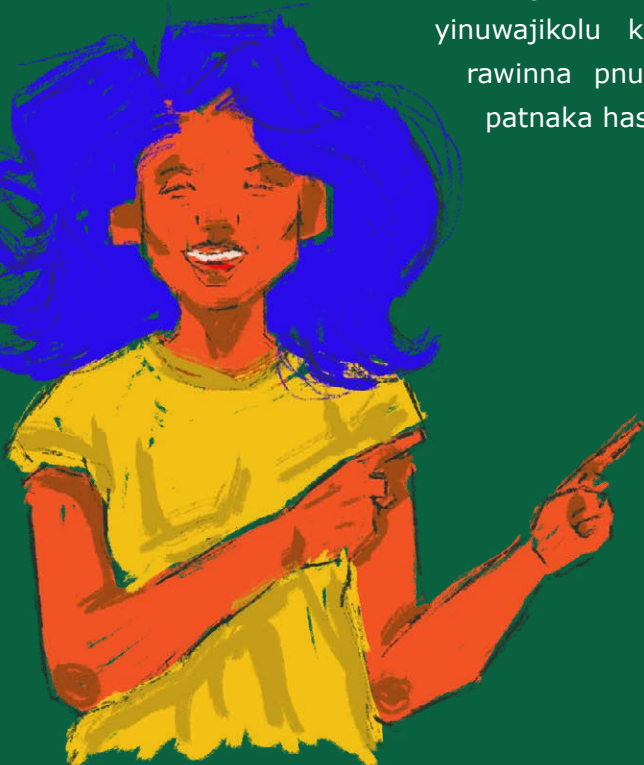
## **KAHWAKPIRRU MAHLEKAKA**

Hasruklewlu tshiji hetjexikowaka pirana waleni satu kamhikaluru tsru potu tshiji hislahluya pnunnu rixikowaka kamrurtshi rukchijika xye chinikantshi, pimrine poktshinkakako ha pimrine yahotlu público pixkonu. Xye hijkakarurkakpotu chikowakaku tsru kamhikalurkaka kihleru kihle hwachle rixyawakapna panerune pejnu hiyruni poktshikaka rixannu hiweklu homkahitatshine htshijneykakna hiyrunu hixkopotukona wane rawyawakna, yinuwaatshine hiyrunu koxa wannananwakako kamhanru ralujiyawakna.

Satu chinikantshi hapatjewakaya khijretlewakleru hichinkaplu satu hijhikaluru pnute hyiywakapa hislahlu tshijiya hiyrunu hwikowakkaka panerune tshijneya hiyrunu unidades e conservação hiyrunu satni halikakalutu himukatkaluru rumukata hihlexikowakapa de política socioambiental, rumukatka hocha hajene hislahikowaka tshiji, hpowratko ha rimatyehixko hixo hiweklu hwiwaka, hasruklewlu hate pinrewlu pirana koxa, wkamrurewamxyawakako retamxiko kihle hwikowaka. Wane koxa rutakka chinikantshi hanu rixa kamhaletko, chinikantshiykaka nikatatshineyatka yinuwaatshineya (panerune, hwatshri kochpakaklerune hiyrunu hiwnaha hwajetatshine) rekhitlu mapa hislahjexikowaka tshijkaka (hepi Panerune Pejnu Tshijne, hiyrunu satu Unidade de Conservação) repixikowakapa ha htseruxikowakapa kamrurtshikaka do poder público, xawakni hmasatka hixo pahixanu tshinanu

Htshinikowakatka hapatjeru yehiya ruslahikowakatka poktshikaka rekhitlu satu chinikantshi herone wale kamhatshine patka, hi panerune Jitaklewaklerune tsonu, hate herone hinamtatshine tshinanu repixikowakatka xye hichinikanuwlu hiyrunu kamhikowakatka hislahlu hocha hwatshineya wtshijnekakaya satu chinikantsiya halikakalutu, hkamhako, pnunnu hixa kamhaletkaluru ruslahikowaka herotu chinikantshi hamatlu, yanumsalu poder público-yma, seyini kahwakpirruyma hiyrunu, ptowruyako wuslahanru wixannu himatkale chinikantshi wuslahyawakatkalu ptowru hocha hajeru . Hislahlu pirana hasruklu ralixleyma repixatkalu wale nanwaka rimatjemyawaklu hiyrunu towrertshine política-te, ruchinikanuwaxinna, pnu rixpiranatluna, rapatjetluna chinikantshikaka hiyrunu ruhlenu.

Puslahanru htshinikowakatka hapatjeru nwakaya ruhlepokotkatka hinkaklu halikakalutu CPI-ACRE, jimatkaleruneya pnunnu hixa himatkalnutatshine, wale tshinanu kakoje hetlena, repixjernaya UICN ptohi Chinikantshi Amazônia 2.0 hkayatlu halikakalutu, wale tshinanu, ramexiniplu htshinikowakatka pixkalutu potuko pixkakakane, rantakluna rixannuna hasruklewluya panerune hasrukjexikolu. Rehxixnawa htshinikowakatka psoluka paptohinkakaya hepineko hepixlewjetatshineya hiyrunu koxa yanumsalu chinikantshikakayma do público hasruklewlu yehi hexikaluru (panerune pejnu hislahjetanru, wannanuko kochpakatshine hiyrunu wanha hwajetatshine). Hiyrunu koxa hyokmakka xye hasruklewlu waleni yinuwajiboklu kamhakaluru romkahixyawakapa suslahlewaklerune rawinna pnuthohne rimatyehixikowakapna pnuthohne hwatshri patnaka hasruklewlu kamhakaluru CPI-HAKRI- ya.





# 3 HIPIRANYEHKAKA

## **MAPA TSHININRI YONATKALURU – HWIKOWAKA HIHLEWLU PIRANA**

### **RUTAJIKOWAKA (HO REKHIXIKOWAKA)**

Hwikowaka hihlewlu pirana waleni satu hasruklewlu mnikawnakatu, waleni satu wkomyeka hchinikanutjeru wipoktshiya rimata hislahikoakapa ptowru hocha hwachatatsrikaka. Waleni satu kamrurtshi hasruklewlu hwikowaka rimata hexikowakapa, wale chinikantshi-ymakni wumukata pnute kihle hiwekle hixleta wipoktshiruya Panerune Pejnu Tshijnekakaya (TI) hiyrunu Unidades de Ruslahikowaka (UC).

Waleni satu pahixanu hijhakaluru hiyrunu hwahohnekanatatshri hasruklewlu xye tshijneya, ptowru hohneruko rumukata kamhakota, hihlepokotkaluru, ptowruyako tshinanu huyrunu rasrukamxikowakna, phujetanuwaka ho mpohijewakanu (PNA – Lei nº 9.795/99, Art. 2º).

Wale pirana yonatkalurutkani papiranyehi: Honha Hepixlewatatshri.

### **KAMHA PIRATKALURKAKA (HO HALUKKALURKAKA)**

#### **Hwikowakkaka piranyehi hasruklewlu waneylu kamha piratkalurkaka:**

1. Hijkakilurni hiynumsakaklu hiyrunu heneka hchinikankaklu, wane potuko runkaklexyawakna jinkaklewaklerune, rixannu potuko hanikajnu hiknohatsrikakaya kyapreu panerune pejnu ruslahikowka honha hepixlewatatshri hiyrunu poktshikaka hwatshineya Panerune pejnu tshijnekakaya hiyrunu (Unidades de Conservação);
2. Retko ptowruyako wanepotuko hiyrunu psol tshijiko hanhe rumukata hislahikota jhamlewakpotukananu, hiyrunkoxa kamnirowaklrune wale tshijkaka hislahikalurkakaya, kihle hwachle wixyawakapa hyrunkoxa kihle hiwekle wixyawakapa poktshiykaka.

## HIPIRANKAKA HWATSHRI YEHIITKA

*"Hwikowaka hasruklewlu pirana waleni rimaxikowakapa ptowru hakanhamtatshrikaka wtshijneya. Hasruklewlu tshinkoklunu, yine kahwaklu hethawakapji rixyawaka (escola). Mturune jethaklerune koxa himukata himata piranatlu hijhakaluru rixyawaka tshiji ruslahikowaka, hi wchanatanru, wuslahanru honha, hi wuknokanru pahixanu malukkotutka wkamrure nwaka hirnunkoxa hi wipoktshiriko. Ruslahko himwastsitkaluru, pimata hislahanru hocha hwachatatshri". -*

*AAFI Ismael Menezes Brandão Shanenawa - XXV Rasrujikolna jitaklewaklerune (AAFI's. CFPF, 2018)*

Rekhitko kamha piranatkalurutka, ranjitektona yijnakotatshine hiyrunu yijnakotatshine hekhitranru wannako hihchinikanna wale piranyehi, chinpotukawa hyonaxyawakapluna htshijne tnumne pirana, hiyrunu hkamhanruna satu hepomhalu hijhakalurpotu: klunhe chinikantshikaka, hijhakaluru suxoneya honu hislahikowaka? Hepixlewatatshine kamhanro sato yonawahlo waneklu papkopa wane pnute taptowrutko, waleprika hethatkaluropa, hyinuwajibowakpatnaka tokantshikaka kamhakanatkalurutka.

Mitshikananu Pirana – Honu Hepixlewatatshri Hislahikowaka

### **Htseruwna hchinikanuxyawaka:**

Honha hepixlewatatshine wannani honu tshiji hitokote hwatshri, poktshi hwatshine himukata hirretanru hiyrunu walenanwaka hiyolikatsiri (do agroecosistema). Honha hitoktshiji yapatshine koxa hiwakni (lençol freático) honha potshwahalu hapatjetkaluru pixkalutu, wanekatkalu sato kachawo hitoktshiji yohimatkaluru pixkalutni.

Honha waleni satu hijhakaluru perotetkolu tshinkaluru, petanu, ptowru hohneruko rawa poktshinkaka pahixanu kamhiywakaplu. Panerune pejnu hocha hwatshine waneyna honha tsuhpotuko, wale tshinkalurukni pahixanu hixo ho pahixanu rawa. Seyni tsru poktshikakatka, pnu potuko rixa. Wenni kachrijatkanatka ho hate rukajitkatkatka. Hochakakni kayjetkatkatka. Hektuhatu yapawakle hiyrunu (produto químicos) ptowru hohneruka wenu raphakaka ruknokjetka. Hocha hwapatshrini hixpotniko kochpakkanatka hiyrunu hkachrijetkatkatka chikoluya. Ptowru walenanwakako hwapatshrini honha hijhakalunni hkachrijetkatkatka hiyrunkoxa wale ymakananuko honha hijhakalurni hpitshohatkatkatka.

Hochayma pnuko rixa, tsrupotlu honha seyini hi yeyixlu rakankaka yineya. Seyni hi ptowru hochi kihle hiwekle rumtujikowaka. Wimatpotutlu hixi panerune pejnu hwa Brasil tshijne (garimpo) mitshikotu hwiwaka, wla hixkaktshi kochpaklu wyehiya hakankaklu honha hpitshoxikowaka hitoktshiji yapatshine. Rawkoxa pimri poktshikaka (agrotóxico) yapjetatshine rutaklena hniklerna hyrunu waleni satu kamrurtshi honha ho hochi himtukatshri.

Rawkoxa poktshikaka, hixkawaka mkamhakane pakatako yine hanuktako rixkachatna, walekni himtuka pitshohletlu hakopha ho raphakaka. Waneko pixka rixa poktshi porkone puraxikowaka yanachatatshine hanuktako rixkatna.

### **Kamrutshikaka – Rimata himatjemikowakapa**

Hanche wixa hislahletanru honha hepixlewatatshri poktshikaka hwatshri, wane hwatshine tsru honha rimwiywakapna hiyrunu kihlehalu?

### **Honha hwiwaka hetapikowaka pipoktshi hajeru:**

Pnute wya hiynumsakakletanu honha piranaya poktshikakaya. Walpokotanru satu hepomlukaka honha hirkaluru, kihlehalu hiyrunu htsernuha yine hirjetanru.

Hma yaprewaxyawakanupa ptowru yineru yijnakotatshri kihleru hepomlu rixyawakapna, mitshikananhapka wkamhanru paxkehi honha hichpajyawaka hwawakle hirjetkaluru hetjetapko poktshi hajeru, hakopha, rapha ho pimrikaka honha hichpajyawaka yine hirjetanru. Rali hetapakoklunpatka, wsatokanutka hethawaka pji.

### **Honha hirkaluru hetjexikolu pirana:**

Ptowruneko hethawaka pjiya repixkakanna honha hirkaluru pirana kamhikolupa, Tshijinwaka hwa piranatatshri haptowrutkalurutka papoktshikaka hihanru.

1. Klu hiwakni poktshi?
2. Hipejnu hakopha poktshi hwa?
3. A água da cacimba serve para que tipos de uso das famílias? Hanu hixa hatanruhe Hakophaha hwapjejeta?
4. A água do rio serve para que tipos de uso das famílias? Hanu hixa hatanruhe wenha hwapjejeta?
5. A água do igarapé serve para que tipos de uso das famílias? Hanu hixa hatanruhe raphaha hwapjejeta?
6. Hanche hixa pinretlu honha yine hirrorupa?
7. Honha hirkaluru hpoyahothe ptowruneko tshinanu? Ha hma poyahotkanuklunu, hanche rumukata hixkota ruhlewaxyawakapa?
8. Hanche rixa powratjetkota hakophakaka?
9. Hakophalhe sahrukokyehitka?
10. Hanche rumukata hixkota ruhlewaxyawakapa hakophakaka?
11. Pipoktshiri rawhe honha jitohluru? Ruhle hichpakhalethe? Hanche rumukata hixkota rumukata hihlewlexyawakapa honha jitohluha?

**Hepomhalkaka yinuwajibolkaka ruslahikowaka hiyrunu himtuklukaka hetatshine honha hepixlewluya:**

Rawatkahe honha hichpakhaxyawaka hirjetkaluru pitshohluru poktshiya pimrine himwastsirune tshinanu (ex. município, peklochane, hixo yapkalurkaka)?

Hanhe rumukata hixa masatkota wane hixatshrikaka?

Klu chinikantshi hetjerewlu himukata kamhakota rexikowakapa xye kojwawaktshi?

Kapapkolhe himwastsirune hiynumsaxikolu hiyrunkoxa (prefeituras, por exemplo)?

**Honha hepixlewatatshri mayawle yehkaka poktshi hajeru:**

Xawakni rimaxikowakatka honha hixannu poktshikaka hwatshri, wuhlepokotanna yijnakotatshine satu mayawletshi kamhikowakapa honha poktshi hwashri, kamha mayawletko, rawyawaka: wenu, rapha, hakopha, hichaha, hixkawaka, ho pakatako waneyhi honha jitohluha.

Ralixkoklunpatka mayawletshine yehkaka, kamhakanatashine hekhitanru hixolune hetanuya.

**Hixkawakkaka himatyehixikolu poktshiykaka:**

*"Nopoktshiya, jaminawa, hixkawaka kamhaka himta tshiji, klu tshinanu tenowaka rutakkoklunupa, hina rixinipa hakopha hyahatanu, hi rumukata kamhakota hixkawaka hakopha stsi ho honha jiwuta. Malukkotutka hixkawaka hanikkaluru malujikowakanu rutakko, pratshine, pakatako patlapa ho porko hma yotnejyawakapluna. Wale tshinanu, hita jitaklewaklerno (AAFI, poktshi kosekatshri, (AISAN), ho kpimrewakleru, wunkaksajetna wimwanune".*

*AAFI Paixão Rubens Jaminawa -XXV Rixinri rasrujikolna de AAFIs. CFPF, 2018*

Kamrurtshi rixyawaka, wkamhanru hepomsalkaka hixkawakakaya pirana poktshiya. Satkaka yijnaktapatshri kamhanru piranatanru hixkawakkaka pji hipoktshiya. Kihleru kamrurtshi hichpajyawakapa, wkamhanru hixkawakkaka hitakyahojikowakapa rutakhiwakatkona pahirtshinekaka poktshi hwatshine wane pnute, runkaklewatanu rimwalhe hixkawaka ho hike hiyrunu hyonatko hanhe rawa hiyrunu hyonatanru hipchii pantshi howuknu rawya. Tshiji nwaka hwatshri kihleylu repixyawaklu rapatjexikowaka hipirana yehkaka:

<b>Paxkehkaka hirtshine hiwakkaka</b>	<b>Hixkawakhe rimwana?</b>	<b>Hanhe rawa hixkawaka?</b>	<b>Rowuknu</b>

Rali kamhakoklunpatka xye hepomhalkaka, yijnaktapatshine hekhitanru hixowakaya kamhakalurutka.

**Hipirana kamhikowaka hiyrunu hmayawlekaka:**

**Rali hekhiretkoklunpatka, yijnaktapatshine yonatanru papirana, ruhixyawakapluna mapa hepomlukaka:**

- *Hanhe rixa hixkawakkaka pji poktshikakaya?*
- *Hanhe rixa kamhakota hixkawakkaka powraxikowaka?*
- *Hanhe rumukata hixkota pnute ruhlewaxyawakapa?*
- *Hipiranyehi pnuteko, satu mayawletshi pkamha piranyehitanu.*

Wuchinkapanru kluhe wkamhatka hate xawakni yijnaktapatshine xkehiyima, hijhakaluru potkaka ho hixkawakkaka pji hexikowaka pirankaka. Xawakni, wnuretanna pamyo yijnaktapatshine rethaxyawakapluna hkamha piranatanruna hixko tokanuyma hiyrunu runkakletanru hipoktshi hixannu potuko hiyrunu hirtshine xkehkaka.

**Yanumsalu:**

Rali hethatkoklunpatka hipiranyekaka, hixo chinikantshi hakanha pimrine yijnaktapatshine hinkakle.

**Ruhlepokoxikowaka hanu rixa hislahkotanu Honha Hepixlewu:**

Xawakni wyonatanro psoji yonawahlomta (targetas), pahixannutshkaka hekhitalurutka. Tshijinwaka rawa pimri hetkalurkakapa, poktshikaka repixyawakapa hanu potu rixa hislahkota honha hepixlewu. Pyonatanru papirana (targetas) hiyrunu halpokotanru satu yanumsalu, satu yapkaku:

Xye kamrurtshi rumukata yinuwalkota paptohpotuko, ruchinijikowakapa hpoyikoxyawaklu ruchinkapikowaka rimatjemikowaka hanu rixa kamhakotanu powrawlu, walekni pahixanu hixetatshrikaka poktshiya, ha wale chinikantshi-yma ruslahyawakapluna hijhakiluru potni poktshi hwatshine tshinanuya hkamhiyawakapluna.

(AIS, AISAN, AAFIs), kasruklewaklerune, poktshi kosekatshine, jiykolewaklerune hiyrunu pimrine yine wanena runkaksalewaxyawakna ha repixlewaxyawakna. Jimatkaleruneyma kamrurewatkoklunu kihle potlu reneka hchinikanrewaxyawakna. Wale kamrurtshi rujhalu romkahixikowaka rimatjemikowakapna powrawlu piranaya, patshwalkaka mwa potukanaxyawakapa ha pimrikaka kojwaklewatatshri.

Hijhakilurni satu jemanchinikankaklu kamhikolu, hanhe rixko hakophakaka hiyrunu hixkawakkaka, satu yapkaku, pnu hichpajikatshine hapojini, rimaxikowakapa poktshikaka hi rimatjemkakachatkona poktshi hwatshine, seyni koxa wimolene wuchinikjene tshinanu.

Hijhakiluru koxni pimrineyma heneka hchinikankaklu rimaxikowakapa powrawlu chinikantshi, kihleru tshinkaluru, pimrine Panerune Tshijneya hiyrunu hwajexikowaka.

## KAMRURTSHIKAKA KAMHA JETKALURKAKAPA

Hiynumsakakanu yijnaktapatshine-yma xye halixkoklunupa yinuwalkalurupa, hipjikaka nsatkapinpatka, hipoktshiykaka. Satkaka xye kamrurtshikaka kamhaketkalurkakapa hkamhakanatkatka hasruklewlu papkolukananu jinkaklewakleru hinkakyawakapna hipoktshi hwatshine, suxone-ymakananuko, mturune jethaklerune, kasruklewaklerune hiyrunu kpinrewakleru ha powrawlu hetatshri.

Ptowru kamrurtshikaka mturune-yma kamhakaluru ralpokotkona kasruklewaklerune-yma repixkajyawakna hiyrunu himatjemkaluru hipirankakyehi hasruklewlu pixkalutu.

Yineru tokanha hapka hijhakalurupa, hiynumsakaklu-yma hiynunkoxa yonawahleylu-yma. Hepi nruhako rumukata yonaxikota.

### **1 - Honha jiwutha hetapikowaka poktshi hajeru hiyrunu rexikowaka hanu rixa hixannuta poktshiya.**

Hiynuwakle tshanixkona hasruklewawaka hiynunkoxa suxone koxa retapikowakapa honha jiwutha wane hwatsri, hyanwaktapko pchinika retko hanhe rixa hixannu yehita ruslahikowakaya hiyrunu hpowraxxyehixikowaka ptowru hohneruka hirhaketkaluru.

Wane pnute, ptowruneko hapatjetanu hasruklewawaka pjiya ho tsru pantshi wale pirana hiynumsaklupa, hyonatko mahatatshri pixka pixkalutu, retko hiyrunu raptowrutko wale ptowruko hixannu honha hichpakawakle, hiyrunu rutakko satu chinikantshi yehi hyotnejikowakapa, ruhlexikowakapa hiyrunu ruslahikowakapa wale honha jiwutha.

### **2 – Proteção de cacimbas Hakopha hislahikolu**

Ruhlewaxyawakapa hetjeru kamrurtshi hiyrunu hichinikanuwlu ruhlexikowakapa honha hwatshrikakatka (1), satu kamrurtshi kamhakalurkakapa hixantshi kamhako hsahrukoke-yma hiyrunu hwachitko hakophakaka poktshi hajene hirjetanruha. Kamrurtshiya, rawyawakpatka hakopha tnumne hi wane hyapanutkana pratshine katsrejayawakpatnaklu hiyrunu waneko rixkaxyawakapna.

Satu hixantshi koxa hitaklu hakopha tnumneya, rakanhiyawakpatnaka kchana, kihle poptshinu tshiji rixyawakapa, jinri ho pakatako krapru.

### 3- Kachpatalu Yonruru

Kachpatalune yonatkalune, yineru nruha yonaxikaluru hiyrunkoxa payri nruhaya, walekaka hepixa hekhiretlu malukkotkaka pirana hiyrunkoxa honha hijhikaluru poktshiya. Hijhikalurni rimatyehixikowakapa hanhe rumukata hitakkota kachpatalakaka hiyrunuhiyonha tshinyawaka wane hwatshine himata piranaxyawakaplu hiyrunu poktshi hapkapatshine tshinanu. Kachpatalu kamhikolu waleni satu kihleru wtokanha yonaxikowakapa rumukata mixkotlexikowakapa hwikowaka hasruklewlu. Hanuktako tixa himukata kamhakjixletka kachpatalakaka, satkaka (artista) hixa kamhalex yawaklu.

Yijnaktapatshine kamhanru chinikantshikaka kamhikowaka hipirankaka hihlehatkaluru kachpataluya, hipirana-yma hiyrunu hmayawle-ymakaka (tshijinwaka, pimrikaka yapkalkune).

*Hakopha tnumne, hahmuna tsonu. Hi porkoneko hi malukkotuko!*

*Wuslahanru wonneha!*

*Hi tshiji puknokanru malukkotu!*

*Hi hakopha puknokanru malukkotu!*

Klu pahixanhe wkamhinri? Hahmuna, pincel, tinta, martelo hiyrunu prego.

Kachpatalune hitajikowakkaka: hanu pothe rutakko hiyrunu rutajikowakpatka kachpatalakaka.

## REXIKOWAKAPA

**Hnikata piraxikowakatka, mapa hepomhalu kamhako heneka hchinikanrewatatshripa, yonawahlewa chpata raptowruxiko hepomhalu:**

1. Klunerhe pukchika hijhikaluru potu hipirankaka yehi hwatshri hwikowaka hasruklewlu pirana hiyrunkoxa honu hislahikowakapa pirana?
2. Pkahwakluhe kyapre rixa yinuwajibowaka pimri kamrurtshikaka? Há klu?
3. Pixaya Klu pirana pothe pkahwaklu hkamhikowakpotupa honha hislahikowakaya tshinanu hiyrunu pimrikaka hwachatatshrikaka, puchinikanretanru halikakpotu ptshijne hijhikaluru hiyrunu pipoktshiya?

## LISTA DE SIGLAS

**AAFI** - Satkaka neru Jitaklewakleru

**ERA** – Petanru chinpotukawa himatkaltshi

**AISAN** – Satkaka yineru Powrawlu hetatshri

**AIS** - Satkaka Yineru yeyixlu hislahatshri

**AMAAIAC** - Satkaka Jitaklewakleru hixannu Ptohi Hakri hajene

**ASAREAJ** – Konruhaklerune Xkehi hiyrunu Jitaklewaklerune da Reserva Wannako rimwalerna kamhaklerune Juruá hapha.

**CONDISE** – Conselho Distrital de Panerune Pomtanu

**CEB** – Poktshikaka Eclesiais de Base

**CFPF** – Hocha Hwatshine Hasrukjexikowaka

**CNPJ** - Cadastro Nacional de Pessoas Jurídicas

**CNS** – Conselho Nacional de Seringueiros, atual Conselho Nacional das Populações Extrativistas

**CPI** – Hakri – Comissão Pró Índio do Hakri

**CPF** – Cadastro de Pessoas Físicas

**CONTAG** – Confederação Nacional dos Kamrurewaklerune Jitaklewaklerune no Acre (CONTAG)

**CORINES** – Coordenadoria de Registro hiyrunu Jetjerewakleru Hethawaka

**DSEI** –Distrito Sanitário Especial Paneru

**FUNAI** – Fundação Nacional do Índio

**IBAMA** – Instituto Brasileiro do Meio Hwikowakkaka hiyrunu Pahixankaka Hwatshrikaka Renováveis

**ICMbio** – Instituto Chico Mendes de Conservação da Pnumnu hixa hiwekletatshri

**IMAC** – Instituto de Meio Hwikowakkaka Hakri-ya

**MPF** – Ministério Público Federal

**ODS** – Halukalurkaka de Desenvolvimento Sustentável

**ONU** – Pahchinikanurune das Nações Unidas

**OPIRE** – Pahchinikanurune Paneruneya Envira Wenne Hajene

**OPIRJ** – Pahchinikanurune Paneruneya Juruá Wenne Hajene

**OPITARJ** – Pahchinikanurune Paneruneya Tarauacá hiyrunu Jordão

**PGTA** – Hichinikanuwlu Tshiji Hislhlu hiyrunu Hwikowakkaka

**PNGATI** – Política Nacional de Tshiji Hislhukaka hiyrunu Hwikowakkaka Panerune Pejnu Tshijne

**RG** – Registro Geral

**SEFAZ** – Secretaria de Estado da Fazenda

**SEMA** – Secretaria Estadual de Meio Hwikowakkaka

**SERNANP** – Sistema Estadual de Áreas Hwatshrikaka Hislhikowaka do Peru

**SNUC** – Sistema Nacional de Unidades de Hislhjexikowaka

**TI** – Panerune Pejnu Tshijne

**UNI** – União das Nações Panerune Hakri hajene hiyrunu Sul do Amazonas (UNI).

**UICN** – União Internacional para a Hocha Hislhikowaka



## RUKCHIJKOWAKA PIRANYEHKAKA

Hakri, CPI. (2006) "Hochayma wimat kalewata hiyrunu wuslahlu hixako wixa hchini-kanuxyawaka", Rio Branco, AC.

Kojwaklukaka yanumsayehixikowaka, hanu rixa hihlepokotko", Rio Branco, AC.

Hakri, CPI. (2016) Chima Mwajnutu Tshijne mayawlekaka psojtkaka", Rio Branco, AC, p. 79.

Hakri, CPI. (2017) "Pnumnu hixa hiwekletatshine, Wiwekle", Rio Branco, AC.

Hakri, CPI. (2020) Panerune hiyrunu Panerune Tshijne Hakriya" Rio Branco, AC, Disponível em: <http://cpiacre.org.br/conteudo/povos-e-terras-indigenas>

Hakri, CPI. (2015) "Mitshikananu hasruklewlu yonaxikolu piranyehi khislahlewaklerune hiyrunu hetjerewlu Chima Mwajutu Tshijne piranyehi", Rio Branco, AC.

Hakri, CPI. (2020) "Yonawahlo hasruklewlu myotshiyima ruslahikowakapa, Hanu rixko Tshitshi hiyrunu Htseruwniywakapa hpoyahoxyawakapa Técnica", Rio Branco, AC.

Hakri, CPI (2004) Yonawahlo X Hasruklewlu Hnikaxyawakluna de AAFIs", Rio Branco, AC.

Hakri, Yokanatashri. (2016) "Xawaknipotuko rixikowakatka hiyrunu Pahchinikanurune" Hichinikanuwlu tshiji hislahlu hiyrunu hwikowakkaka Panerune Tshijneya Alto Poroso Wenne, Rio Branco, AC, p. 23.

Almeida, Mauro Barbosa W. (2004) "Direito à Hocha hiyrunu Hwikowaka khetjekleru: Konruhaklerune hiyrunu hyahotkaklena" em RBCS Vol. 19 nº. 55, Disponível em:

Brasil, Civil pji. (2018) Decreto nº 7.747, de 5 de junho de 2012: Yokanatlu Política Nacional Tshiji Hislahlu hiyrunu Hwikowakkaka Panerune pejnu Tshijne – PNGATI, hiyrunu pimri hijhalkaka, Brasília-ya, DF, Mimaletkotu em: [www.planalto.gov.br/ccivil\\_03/\\_ato2011-2014/2012/decreto/d7747.htm](http://www.planalto.gov.br/ccivil_03/_ato2011-2014/2012/decreto/d7747.htm)

Brasil, Instituto Chico Mendes Ptoaru hixatshri Hiweklu 2013, Rixannu Hasruklewle Nº 35, de 27 de dezembro de 2013: Disciplina no âmbito do Instituto Chico Mendes, as diretrizes e procedimentos administrativos a para kamhikowakapa hiyrunu ruhixikowakapa hirtshine hepixkallune em Reservas Wannako kochpakjetanru Reserva de Desenvolvimento Sustentável hiyrunu Floresta Nacionais, wannako rixannuna homkahitatshine, Instituto Chico Mendes de Conservação da Hixo hiweklukaka, DF.

Brasil, Senado Federal. Constituição (1988) Constituição da República Federativa do Brasil, Centro Gráfico, Brasília, DF.

Coelho, M. Emília. (2018) "Hapatjeru pirana yonaxikolu de socialização de informação hiyrunu kamrurtshi de campo da Capacitação sobre Hislahluya em Áreas Hislahikowaka" no Parque Estadual Chandless", Rio Branco, AC.

Comandulli, Carolina Schneider. (2016) 'Ruynumsaxikowaka com Ashaninka Francisco Piyãko, satu tsru hixikatshriwa da Paxkehrune Ashaninka do Rio Amônia – APIW-TX' BRASILIANA- Journal for Brazilian Studies, Vol. 5, nº1 I SSN 2245-4373.

FOREST TREND (2016) "PanerunePejnu Tshijne Hislahlu na América Latina", Disponível em: [https://www.forest-trends.org/wp-content/uploads/2019/05/Livro-23alt\\_16larg-30PORT1.pdf](https://www.forest-trends.org/wp-content/uploads/2019/05/Livro-23alt_16larg-30PORT1.pdf)

GAVAZZI, Renato Antonio (2018) "Contribuição dos Panerune Pejnu Jitaklewaklerune Hakri-ya para o Equilíbrio do Clima" AMAAIAC, Rio Branco, AC.

GUAJAJARA, Sonia (2019) "Tuynumsaxikowaka – Sonia Guajajara", Rede TVT, Disponível em: [www.youtube.com/watch?v=QWPVOrllhfs&t=918s](http://www.youtube.com/watch?v=QWPVOrllhfs&t=918s)

Kaxinawa, M. Edson, Kaxinawa Ixã, e KAXINAWA S. Ibã Isaias, "Panerune no Hakri: Hinkaklu hiyrunu Haptowruwaka", CPI-ACRE, Rio Branco, AC.

Nações Unidas (2008) "Declaração das Nações Unidas sobre os direitos panerune pejnu tshinanu " Rio de Janeiro, RJ, Disponível em: [www.un.org/esa/socdev/unpfii/documents/DRIPS\\_pt.pdf](http://www.un.org/esa/socdev/unpfii/documents/DRIPS_pt.pdf) (Acessado em novembro de 2016).

Palmieri, R, e Veríssimo, A. (2009) "Conselhos de Unidades de Conservação: Guia sobre sua hkamhikowakapa hiyrunu hyinuwajibowakapa", Imaflora, Piracicaba, SP, Imazon, Belém, PA, Disponível em: <https://imazon.org.br/PDFimazon/Portugues/livros/conselhos-de-unidades-de-conservacao-guia-sobre.pdf>

Pereira, Luís Fernando (2014) "Legislação ambiental e indigenista: uma aproximação ao direito socioambiental no Brasil", Museu do Índio/IEPÉ/FNMA/MMA, 1ª reimpressão, Rio de Janeiro, RJ.

Pinedo, Maria Luiza (2018) "Tshiji pirana Hislahlu hiyrunu Hwikowakkaka das Áreas Hocha Hislahikowaka do Município do Jordão", CPI-Acre, Rio Branco, AC.

Povo Manxineru (2019) "Jemahchinikankaklu de Rimaxikowakapa dos Povos Jaminawa hiyrunu Manxinerune Chima Mwajnutu Tshijne Hwatshine", CPI-Acre, Rio Branco, AC.

Ramalho, M. e Ana Luiza. (2015) "Yahaphalu yonaxikolu piranyehi de Retapikowaka Kaxinawane tshijne do Rio Jordão Baixo Rio Jordão", CPI-Acre, Rio Branco, AC.

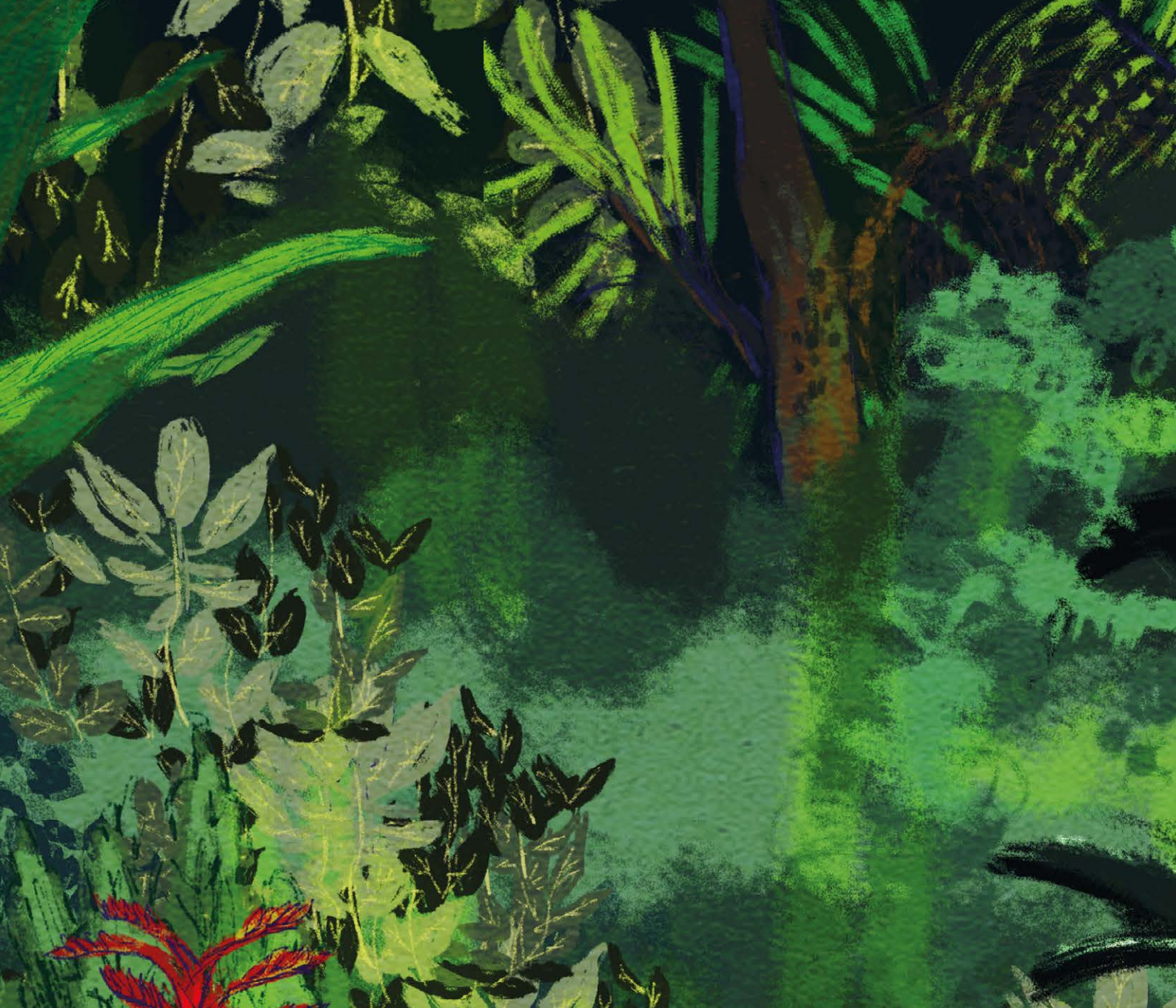
Rede de Cooperação Alternativa (2013) "Tshiji Hislahlu hiyrunu Hwakowakkaka Panerune Tshijne Pejnu na Amazônia Brasileira: Os percursos da Rede de Cooperação Alternativa", Marina Kahn, São Paulo, SP.

Ribeiro F. Estevão. (2019) "Relatório Tshiji Hislahlu hiyrunu Hwikowakkaka wana jihlokatschri das ANPs de Assis Brasil: Hislahlu Jihlokatschri para a ruslahikowakapa tshijkaka", CPI- Acre, Rio Branco, AC.

SEBRAE (2014) "Pnumnu Hixatschri Chinikantschi Hepixkaklu: Cooperativa", Brasília, DF, Disponível em: [http://www.bibliotecas.sebrae.com.br/chronus/ARQUIVOS\\_CHRONUS/bds/bds.nsf/65f0176ca446f4668643bc4e4c5d6add/\\$File/5193.pdf](http://www.bibliotecas.sebrae.com.br/chronus/ARQUIVOS_CHRONUS/bds/bds.nsf/65f0176ca446f4668643bc4e4c5d6add/$File/5193.pdf), (Acessado em 28 de maio de 2020), p. 39-46.

UICN (2020) "Retko Hanu Rixatka Poktshiyamakaka – hihleyehitkalurutka", Chinukantschi Hocha 2.0, Rio Branco, AC, p. 112.

UICN (2020) "Chinikantschi Homkahitkalurupa Ruslahikowakapa Hocha Panerune pejnu Tshijne nwaka hiyrunu Unidades de Conservação", Hocha Chinikantschi 2.0, Rio Branco, AC.



Escritório da União Internacional para a Conservação da Natureza (UICN)  
CLN 210, Bloco C, Sala 205-208 - Asa Norte, Brasília. DF, Brasil. 70862-530  
+55 61 35472588 [www.iucn.org](http://www.iucn.org)



União Europeia



Fundación  
Natura  
COLOMBIA



Suriname